

PORTUGAL.			
1902	1,624 tons	£13,348	
1901	1,782 "	15,125	
1900	2,519 "	19,460	
1899	1,775 "	13,984	
1898	2,058 "	14,341	

UNITED STATES.			
1902	4,764 tons	\$37,051	
1901	11,384 "	91,491	
1900	12,006 "	55,393	
1899	10,525 "	62,922	
1898	17,279 "	68,189	

PULP NOTES.

The E. B. Eddy Company, of Hull, Que., recently installed two new grinders in No. 2 mill to increase the output of ground wood pulp to keep pace with the manufacture of paper.

The Spanish River Pulp & Paper Company have their mills at Webbwood, Ont., nearly completed. They will take out a large quantity of pulp wood this winter, and will likely commence to manufacture pulp early in the spring.

An official of the Timber Estates Company announced when in Montreal recently that arrangements had been completed for the sale of extensive timber limits

and mills in Newfoundland to Harmsworth Bros., of the London Daily Mail.

The pulp wood for the Trader's Paper Mill at Lockport, N. Y., has been obtained mostly by rail from Canada. It is now proposed to discard the rail service and have the wood shipped by boat across Lake Ontario to Alcott Harbor, and thence by trolley to the mills at Lockport.

The Price-Porritt Pulp & Paper Company have their new pulp mill at Rimouski, Que., in operation, turning out 30 tons of dry pulp per day. The mill is located on the Gulf of St. Lawrence. The pulp manufactured is carefully screened and is pressed with hydraulic presses, giving a uniform percentage of 50 per cent.

Charles H. Vogel, of Ottawa, is engaged on preliminary plans for the improvement of a water power in the Lake of the Woods district, estimated at 10,000 horse power and said to be one of the best in North America. It is the intention to utilize the power for the operation of pulp and paper mills to be built there.

The Canada Paper Company, of Windsor Mills, Que., have adopted a novel scheme to increase the interest of the employees in the business of paper

manufacturing. They offer prizes for the most valuable suggestions touching the operations of the plant, such as suggestions for improving the bleaching and sizing, for improving the steam plant, and for paper-making methods generally.

The Year Book of Canada for 1902 shows that the wood pulp industry for the calendar year mentioned was carried on by thirty-five mills, which had an output of 240,989 tons of wood pulp. Of this quantity 155,210 tons were mechanical pulp, 76,735 sulphite, and 9,044 soda. The corresponding quantities for 1901 were: Mechanical, 169,360 tons; sulphite, 84,500 tons; and soda, 10,740 tons. This shows a decrease of 23,611 tons in 1902. The decrease is distributed: Sulphite, 7,765; soda, 1,696; mechanical, 14,150 tons. The total value of the output of 1902 was \$4,383,182. Nine of the thirty-five mills manufacture sulphite pulp and four soda pulp. Twenty-five mills manufacture mechanical pulp and four make both chemical and mechanical. Taking the returns of thirty-two mills, the average time the mills ran during the year was ten months. The value of the exports of pulp in 1902 was \$2,511,664, while the consumption in the domestic market was valued at \$1,871,518. Canada exported about 57 per cent. of her production, Great Britain taking \$975,192 worth, and the United States \$1,518,139.

CHAS. H. VOGEL
A. M. Can. Soc. C. E.

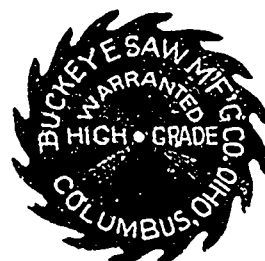
47 and 48 Carleton Chambers,
— OTTAWA, CAN.
Long Distance Phone 1791.

MILL AND HYDRAULIC ENGINEER

PULP MILLS AND WATER POWER

ESTIMATES, PLANS, SUPERVISION AND CONTRACTS

SPECIALTIES.—Paper, Pulp and Sulphite Fibre Mills, Electric Plants, Surveys and Improvements of Water Power.



...BUCKEYE SAW M'FG. CO...

MANUFACTURERS OF

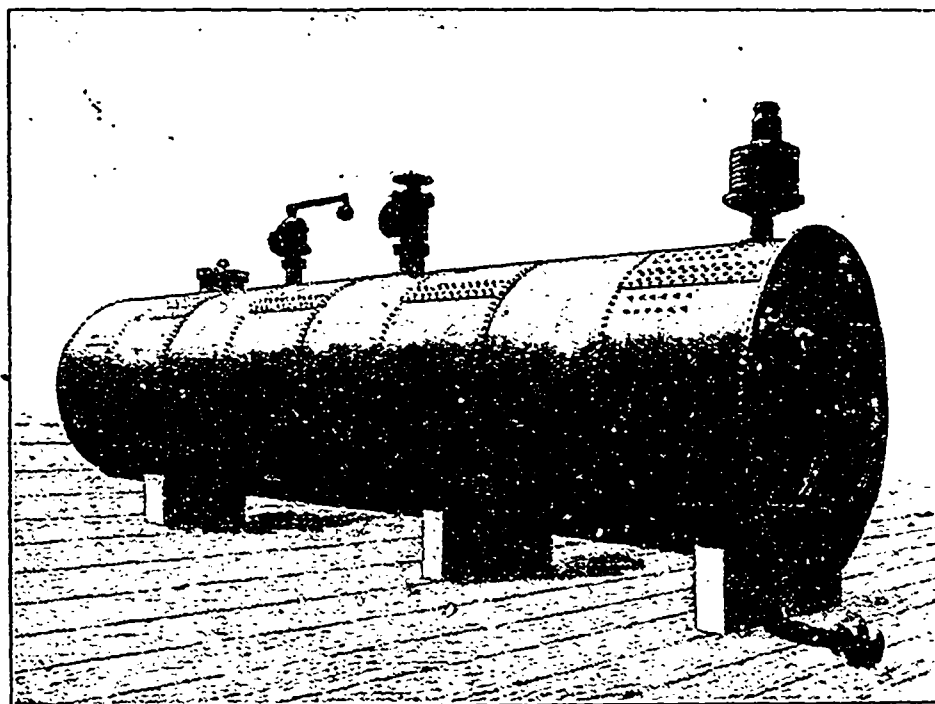
High-Grade Saws

Quick and careful work on Repairing.
All kinds of Mill Supplies.

REYNOLDS BROS., Proprietors
267 N. Water Street, COLUMBUS, OHIO.

Please mention the CANADA LUMBERMAN when
corresponding with advertisers.

STEAM ENGINES, BOILERS, PULP MILL MACHINERY, TURBINES



All kinds and sizes of boilers are built by us, the above cut showing a Lancashire type.

Horizontal tubular boilers for brick setting are our specialty, however, and our Catalog 112 gives 48 pages of information.

N. B. Our address is 915 Lansdowne Street, Sherbrooke.

THE JENCKES MACHINE COMPANY, SHERBROOKE, QUE., CANADA.

THE JENCKES MACHINE COMPANY, SHERBROOKE, QUE., CANADA.