

F. J. Drake's Patent

Saw-Mill and Shingle Mill Machinery

Easiest and simplest adjustments.

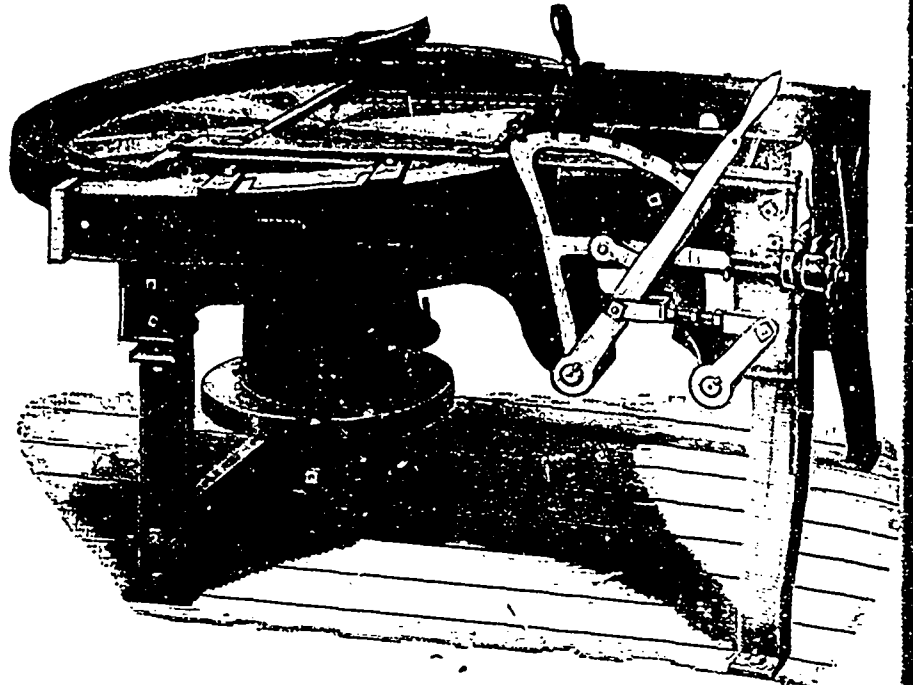
Fitted with 40 inch or 42 inch saws.

The lightest, strongest and easiest running carriage. Made of steel tubing. Takes in a block 18 inches wide and 20 inches long, or longer if ordered.

Will make Shingles, Heading or Box Boards without removal of any parts.

First cut from a Slab makes perfect Heading or Shingle.

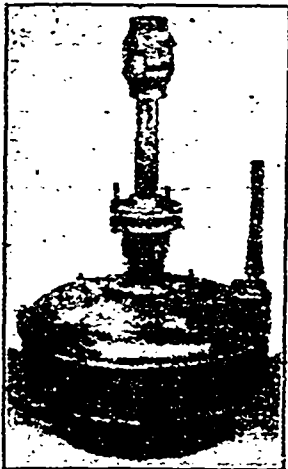
I am selling complete outfits at reduced prices. Send for catalogue.



"DAUNTLESS" SHINGLE AND HEADING MACHINE.

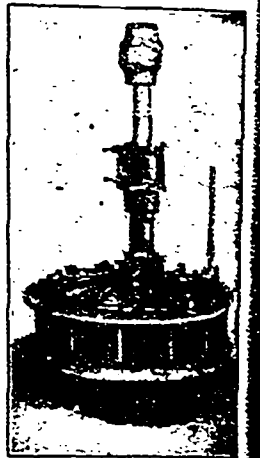
F. J. Drake, BELLEVILLE
ONT.

Do You Need a Turbine?



Now is the best possible time for replacing your old, worn-out wheel with a new Turbine that will save Worry, save Time, and make Money for you. If you want a well built wheel, a wheel that will give you steady reliable power every day, a wheel that will save water, a wheel that will last you a lifetime, and that is sold at a reasonable price, then write us for catalogue and prices on the

Standard Leffel and Vulcan Turbines.



They are better developers to-day than ever before, and are growing in popularity, as our order books show.

We have now for distribution our new **SAW** and **SHINGLE MILL MACHINERY CATALOGUES**, with engravings and descriptions of our machines with their latest improvements. We will be glad to send you one on receipt of your address. You cannot buy a better Portable Mill than the "Lane Improved".

MADISON WILLIAMS, PORT PERRY, ONT.

H. E. PLANT, Agent,
Cor. Common & Nazareth Sts., MONTREAL.

SUCCESSOR TO
PAXTON, TATE & CO.

Winnipeg Machinery & Supply Co.
Western Selling Agents, Winnipeg