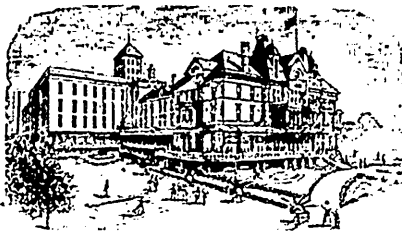


## CANADA'S GREATEST CELEBRATION OF THE JUBILEE YEAR.

The management of the Toronto Industrial Exhibition, lasting from Aug. 30th to Sept. 11th, have made preparations for the Exhibition with the view of surpassing anything of the kind ever seen in this country. The number of applications received, the list and value of prizes to be awarded are already far above other years, and there is no doubt that the Victorian Era Exposition will excel in the comprehensiveness and attractiveness of the numerous features. The buildings have been enlarged, the grounds altered all with a view of increasing the facilities and comforts of patrons and exhibitors, and commensurate with the scale upon which the exhibition features have been projected, are the entertainments and amusements provided. A peculiarly appropriate pageant, the replica of the

Queen Jubilee Parade in London will be produced during the Exhibition, and the size and number of the preparations prove that nothing will have ever been seen like it in this country. The agents have returned from across the water with scenery and stage fittings on a scale hitherto unknown here. They have brought with them the exact replica of the costumes worn by the Royal personages and the uniforms worn by the soldiers, Indian princes and marshals. The draperies are in many cases those used on the day of the Jubilee Parade in England. Besides this interesting and natural spectacle the entertainment will include many other features, and at night the effect will be lengthened, the beauty of the scene enhanced by illuminations and fireworks.



### THE ALMA

is a solid brick building open all the year. Situated in a healthful climate free from malaria. Amusements and pleasures are rife for convalescents. Two valuable and distinct mineral waters. Cuisine unexcelled. We solicit investigation. Write for illustrated book.

### THE ALMA Alma, Mich.

A thoroughly scientific institution for treatment of chronic rheumatic, kidney, liver, stomach and bladder diseases. "Neurasthenia" and women's diseases receive special attention. No cases of insanity or tuberculosis received. Hydro and electrotherapeutics are prescribed by physicians and administered by trained nurses. Complete rest is available. We protect the physician's interests. Special rates to physicians and their families.

Elmore S. Pettyjohn, M.D.,  
Medical Superintendent.