

MUSIC.

Through early days, when like a fruit in reach. Hope lingered, inviting sweet, before my sight. Dear was each mood that music may invite.

Or like pale mourners carrying sprays of rue. With tremulous bosoms and low eyes that grieve. With dark voluminous robes and loosened hair.

EDGAR FAWCETT.

OUR CHESS COLUMN.

Solutions to Problems sent in by Correspondents will be duly acknowledged.

TO CORRESPONDENTS.

J. W. S., Montreal.—Papers to hand. Many thanks. Student, Montreal.—Correct solution received of Problem No. 304.

We saw a notice a short time ago to the effect that the Chessplayers' Chronicle at the beginning of the new year would appear as a weekly chess journal, and we were glad to believe that there was sufficient interest felt in the game in the old country to lead to its support under such new arrangements.

We should much like to know to what extent this readable condition of their club is owing to the manner in which they manage their practice among those who attend their ordinary meetings.

The following from the Globe Democrat will be read with interest.

Capt. Mackenzie, after leaving Philadelphia, where he contested against four of the strongest players making an even score, visited Baltimore to contend with Mr. Holliman. During his visit to the Queen City he is reported to have also come out even.

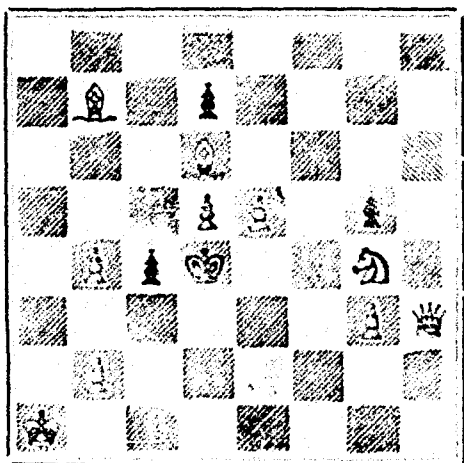
An illustrious player, in a forthcoming article on chess, says that Philadelphia, in its chess strength, surpasses every city in the world except London, and he specifies the names of L. D. Barbour, Harry Davidson, Jacob Elson, D. M. Martinez, B. M. Neill, A. Roberts, G. Reichheim and J. G. Whiteman.

The Oxford University Chess Club played its first match with the Oxford City Club on Friday, 16th. The result of the match was as follows:—City Club, 13 games; University Club, 3; draws games counting as halves.

PROBLEM No. 305.

By J. W. Alton.

BLACK.



WHITE.

White to play and mate in three moves.

GAME 437TH.

Played at Philadelphia on the 6th inst., between Capt. Mackenzie and Mr. Martinez.

ROY LEPAS.

- White.—(Capt. Mackenzie) 1. P to K 4 2. K Kt to B 3 3. Kt to K 5 4. Castles 5. P to Q 1 6. P to Q 5 7. Kt takes Kt 8. Q takes P 9. B to K B 1 10. B to R 4 (c) 11. P to Q 3 12. B to Q Kt 1 13. B takes Q P 14. Kt to B 3 15. Q R to Q sq 16. Q takes B 17. Q to Q 4 18. K R to K sq 19. P to Q R 4 (c) 20. Kt takes R P 21. Kt to B 5 22. R takes R

- 23. R to K 7 24. P to Q B 3 25. Kt to K 6 (c) 26. Kt takes Q 27. E to R 7 28. P to B 3 29. B to B 2 30. K to B 2 31. P to Q Kt 4 32. Kt takes Kt 33. R takes Q R P 34. B to B 3 35. Kt to K 5 36. Q takes Q 37. R to R sq 38. Kt to B 4 39. K to Kt sq 30. P to Kt 4 31. Kt to K 3 32. P takes Kt

And wins.

NOTES.

(a) Black's form of defence in this game is not to be commended, but he fights splendidly under the disadvantages it incurs. (b) A move for the gallery is R to K sq, to which the defence replies with castling.

SOLUTIONS.

Solution of Problem No. 301.

- White. 1. Kt to B 5 2. R takes Kt 3. R to K 2 mate Black. 1. Kt to Kt 6 2. B takes Kt

These are other defences.

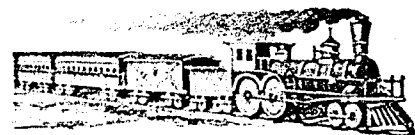
Solution of Problem for Young Players No. 305.

- WHITE. 1. R to Q R 3 2. Mates acc. BLACK. 1. Any

PROBLEM FOR YOUNG PLAYERS, No. 306.

- White. 1. K at Q Kt 6 2. R at Q sq 3. B at R Kt 7 4. Kt at K Kt 5 5. Pawns at K B 3 and Q Kt 4 Black. 1. K at Q 4 2. Kt at Q 6 3. Pawns at Q 3 and K B 6 and K R 4

White to play and mate in three moves.



C. M. O. AND O. RAILWAY.

Change of Time.

COMMENCING ON

Thursday, Dec. 23rd, 1880.

Trains will run as follows:—

Table with columns: MIXED, MAIL, EXPRESS. Rows list train routes between Montreal, Quebec, and other stations with departure and arrival times.

THE COOK'S FRIEND

BAKING POWDER

Has become a HOUSEHOLD WORD in the land, and is a HOUSEHOLD NECESSITY

in every family where Economy and Health are studied. It is used for raising all kinds of Bread, Rolls, Pastry, Cakes, Griddle Cakes, &c., &c., and a small quantity used in Pie Crust, Puddings, or other Pastry, will save half the usual shortening, and make the food more digestible.



SAVES TIME. IT SAVES TEMPER. IT SAVES MONEY. For sale by storekeepers throughout the Dominion, and wholesale by the manufacturer. W. D. McFARREN, UNION MILLS, 35 College Street.

The Burland Lithographic Co., (LIMITED).

NOTICE is hereby given that a Dividend of SEVEN PER CENT.

upon the Capital Stock of this Company has been declared, payable at its office, No. 7 Bleury Street, Montreal, on and after the

TENTH DAY OF JANUARY, 1881.

By order of the Board.

F. B. DAKIN, Sec.

NEW YEAR'S PRESENTS.

A GRAND DISPLAY OF NOVELTIES!

BEAUTIFUL GOODS!

The Attraction of the West-End!

CALL AND SEE THEM!

PRICES AS USUAL MODERATE.

758 Dorchester Street, NEAR THE WINDSOR HOTEL.

William J. Clarke.

1880--1881.

DRYSDALE

IS FULLY PREPARED FOR

Christmas & New Year.

His stock of

Books,

Fancy Goods,

Photograph Albums,

Scrap Albums, &c., &c.,

is very complete, and at very low prices. Imported direct and sold retail at wholesale prices.

W. DRYSDALE & CO.,

232 ST. JAMES STREET.

—AND—

BRANCH STORE 1423 ST. CATHERINE STREET.

CONTRACTS FOR ADVERTISING IN THE Canadian Illustrated News MAY BE MADE AT OUR LOWEST RATES WITH MR. E. DUNCAN SNIFFIN, ASTOR NEW YORK. HOUSE OFFICES

The Scientific Canadian

MECHANICS' MAGAZINE

PATENT OFFICE RECORD

Devoted to the advancement and diffusion of Practical Science, and the Education of Mechanics.

THE ONLY SCIENTIFIC AND MECHANICAL PAPER PUBLISHED IN THE DOMINION.

THE BURLAND LITHOGRAPHIC CO.

OFFICES OF PUBLICATION, 5 and 7 Bleury Street, Montreal.

G. B. BURLAND, General Manager. F. N. BOXER, ARCHITECT & CIVIL ENGINEER, Editor

TERMS:

One copy, one year, including postage, \$2.00 One copy, six months, including postage, 1.10 Subscriptions to be paid in ADVANCE.

The following are our advertising rates:—For one monthly insertion, 10 cts. per line; for three months, 25 cts. per line; for six months, 45 cts. per line; for one year, 75 cts. per line; one page of illustration, including one column description, \$30; half-page of illustration, including half column description, \$20; quarter-page of illustration, including quarter column description, \$10.

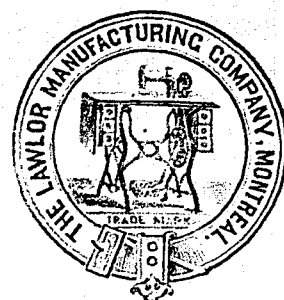
10 per cent. off on cash payments. INVENTIONS AND MACHINERY, &c., or other matter of an original, useful, and instructive character, and suitable for subject matter in the columns of the MAGAZINE, need not as an advertisement, be illustrated at any reduced rates.

REMITTING MONEY.—All remittances of money should be in the form of postal orders. When these are not available, send money by registered letters, checks or drafts, payable to our order. We will only undertake to become responsible for money when sent in either of the above ways.

This journal is the only Scientific and Mechanical Monthly published in Canada, and its value as an advertising medium for all matter connected with our Manufacturing, Foundries, and Machine Shops, and particularly to Inventors, is hardly to be overestimated.

50 Gold, Chromo, Marble, Snowflake, Wreath, Scroll, Motto, &c. Cards, with name on all 10c. Agent's complete outfit, 60 samples 10c. Heavy gold ring for club of 10 names. Globe Card Co., Northford, Conn.

\$66 a week in your own town. Terms and \$5 out of \$66 free. Address H. HALLET & Co., Portland, Maine.



SEWING MACHINES.

Encourage Home Manufacture and try our GENUINE IMPROVED SEWING MACHINES.

We manufacture all the leading Styles and Patterns, and our Improvements are secured by Letters Patent.

THE LAWLOR MANUFACTURING CO., 365 Notre Dame Street.

50 All Gold, Chromo and Lithograph Cards, (No 2. Alike.) With Name, 10c. 35 Flirtation Cards, 10c. Game of Authors, 15c. Autograph Album, 20c. All 50c. Clinton Bros., Chiltonville, Conn.

Mr. J. H. BATES, Newspaper Advertising Agent, 41 PARK ROW, Times Building, NEW YORK, is authorised to contract for advertisements in the CANADIAN ILLUSTRATED NEWS at our BEST RATES.

25 New and Beautiful Japanese, Rose Bud, Trans-parent, Comic and Blue Bird Cards, with name on all 10c. Twelve packs for one dollar. Agent's complete outfit, 10c. Sample of Magic Cold Water Pen (writes without ink), 5c. Agents wanted. Queen City Card House, Toronto.

THE BURLAND LITHOGRAPHIC COMPANY

(LIMITED)

CAPITAL \$200,000,

GENERAL

Engravers, Lithographers, Printers

AND PUBLISHERS,

3, 5, 7, 9 & 11 BLEURY STREET, MONTREAL.

THIS ESTABLISHMENT has a capital equal to all the other Lithographic firms in the country, and is the largest and most complete Establishment of the kind in the Dominion of Canada, possessing all the latest improvements in machinery and appliances, comprising:—

- 12 POWER PRESSES 1 PATENT LABEL GLOSSING MACHINE, 1 STEAM POWER ELECTRIC MACHINE, 4 PHOTOGRAPHING MACHINES, 2 PHOTO-ENGRAVING MACHINES, Also CUTTING, PERFORATING, NUMBERING, EM-BOSSEING, COPPER PLATE PRINTING and all other Machinery required in a first class business.

All kinds of ENGRAVING, LITHOGRAPHING, ELECTRO-TYPING AND TYPE PRINTING executed IN THE BEST STYLE

AND AT MODERATE PRICES

PHOTO-ENGRAVING and LITHOGRAPHING from pen and ink drawings A SPECIALTY.

The Company are also Proprietors and Publishers of the

CANADIAN ILLUSTRATED NEWS, L'OPINION PUBLIQUE, and SCIENTIFIC CANADIAN.

A large staff of Artists, Engravers, and Skilled Workmen in every Department.

Orders by mail attended to with Punctuality; and prices the same as if given personally.

G. B. BURLAND, MANAGER.

THIS PAPER MAY BE FOUND ON FILE AT GEO. P. ROWELL & CO'S Newspaper Advertising Bureau (10 SPRUCE STREET), WHERE ADVERTISING CONTRACTS may be made for it in NEW YORK.

DONT NEGLECT YOUR FEET Popular Shoe House, Chaboillez Square.

Cloth, Boots and Slippers, Overshoes, Moccasins and all other seasonal goods at prices far lower than elsewhere.

RONAYNE BROS.