

# INSTRUCTION BY MAIL

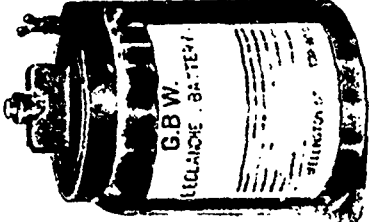
In Architecture  
 Architectural Drawing,  
 Plumbing, Heating and Ventilation  
 Bridge Engineering,  
 Railroad Engineering,  
 Surveying and Mapping,  
 Mechanics,  
 Mechanical Drawing,  
 Mining,  
 English Branches, and

## ELECTRICITY

Diplomas awarded. To begin students need only know how to read and write. Send for Free Circular of information stating the subject you think of studying to The Correspondence School of Mechanics and Industrial Sciences, Scranton, Pa.

# 4000 STUDENTS.

## THE GALVANIC BATTERY WORKS



145 WELLINGTON ST. W. TORONTO

\* SECOND-HAND \*

# ENGINES

IN GOOD CONDITION,  
FOR SALE LOW

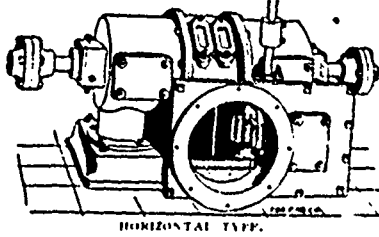
- 50 H.P. Corliss
- 50 " Automatic Ball (American)
- 60 " " Leonard-Ball
- 60 " " Armington & Sims
- 25 " " Westinghouse

— REPLACED BY —

## ROBB-ARMSTRONG ENGINES

### ROBB ENGINEERING CO., LTD.

Amherst, - Nova Scotia.



HORIZONTAL TYPE.

## Little Giant Turbines

WATER WHEELS FOR ALL PURPOSES  
 HORIZONTAL OR VERTICAL  
 Water Wheel Governors, Machine Dressed Gears,  
 Pulleys, Shafting, Hangers, Etc.  
 Write for Catalogue and Gear Lists.

J. G. WILSON & Co., GLENORA, Ont.

## THE STEAM BOILER & PLATE GLASS INSURANCE COMPANY OF CANADA

Head Office:  
LONDON.

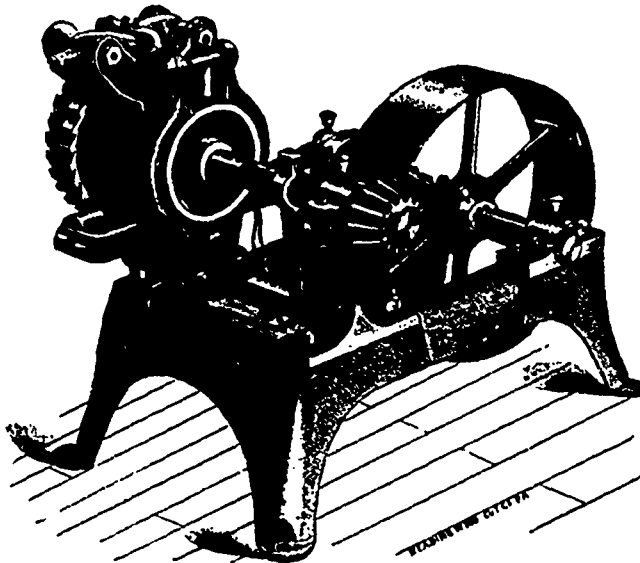
JAMES LAUT,  
MANAGER.



The unexpected generally happens. Don't trust to luck. It pays to know that you are right. Have your boiler inspected and insured. Our policy covers the lives of men in charge of boiler, without any additional charge.

J. H. KILLEY, Consulting Engineer.  
Subscribed Capital, \$200,000.

JOHN FAIRGRIEVE, Chief Inspector.  
Full Government Deposit.



## ELECTRIC WATERWHEEL GOVERNOR

PATENTED.

Variations in speed detected by fast running, sensitive Governor Balls. Gate movement instantly set in operation by electric current. Quick and powerful action.

Write for particulars.

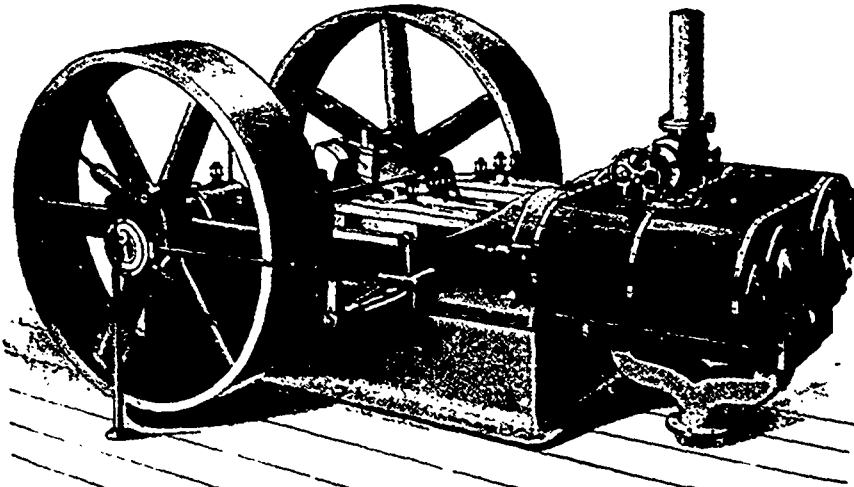
### WM. KENNEDY & SONS

Owen Sound, Ont.

### THE CANADIAN LOCOMOTIVE & ENGINE CO., Ltd. KINGSTON, - ONTARIO.

MANUFACTURERS OF

## Locomotive, Marine and Stationary Engines



ARMINGTON & SIMS HIGH SPEED ENGINE FOR ELECTRIC LIGHT PLANT, ETC.

### NOTICE.

The Canadian Locomotive & Engine Co., Limited, of Kingston, Ontario, have the exclusive license for building our Improved Patent High Speed Engine for the Dominion of Canada, and are furnished by us with drawings of our latest improvements.

PROVIDENCE R I, Nov 18th, 1889.

(Signed) ARMINGTON & SIMS.



### THE HAZLETON BOILER.

The  
 Handiest,  
 Safest,  
 and  
 Most  
 Economical

Boiler.

**"CYCLE" GAS ENGINE**  
 IMPULSE EVERY REVOLUTION without  
 a separate pump. NO SLIDE.

Descriptive Catalogues of the above on application.