

# Canadian Churchman.

TORONTO, THURSDAY, OCTOBER 28, 1897.

Subscription, - - - - Two Dollars per Year.

(If paid strictly in Advance, \$1.00.)

ADVERTISING RATES PER NONPARIEL LINE - 10 CENTS.  
Liberal discounts on continued insertions.

ADVERTISING.—The CANADIAN CHURCHMAN is an excellent medium for advertising, being by far the most widely circulated Church Journal in the Dominion.

BIRTHS, MARRIAGES, DEATHS.—Notices of Births, Marriages, Deaths, etc., two cents a word prepaid.

THE PAPER FOR CHURCHMEN.—The CANADIAN CHURCHMAN is a Family Paper devoted to the best interests of the Church in Canada, and should be in every Church family in the Dominion.

CHANGE OF ADDRESS.—Subscribers should be careful to name not only the Post-Office to which they wish the paper sent, but also the one to which it has been sent.

DISCONTINUANCES.—If no request to discontinue the paper is received, it will be continued. A subscriber desiring to discontinue the paper must remit the amount due at the rate of two dollars per annum for the time it has been sent.

RECEIPTS.—The label indicates the time to which the subscription is paid, no written receipt is needed. If one is requested, a postage stamp must be sent with the request. It requires three or four weeks to make the change on the label.

CHECKS.—On country banks are received at a discount of fifteen cents.

CORRESPONDENTS.—All matter for publication of any number of the CANADIAN CHURCHMAN, should be in the office not later than Friday morning for the following week's issue.

AGENT.—The Rev. W. H. Wadleigh is the only gentleman travelling authorized to collect subscriptions for the CANADIAN CHURCHMAN.

Address all communications,

FRANK WOOTTEN,

Box 2640, TORONTO.

Offices—Cor. Church and Court Streets.  
Entrance on Court Street.

NOTICE.—Subscription price to subscribers in the City of Toronto, owing to the cost of delivery, is \$2.50 per year, if paid strictly in advance \$1.50.

## Lessons for Sundays and Holy Days.

Oct 31st—TWENTIETH SUNDAY AFTER TRINITY.

Morning—Ezekiel, 34. 2 Tim. 2.

Evening—Ezekiel, 37; or Dan. 1. Luke 21, v. 5.

Appropriate Hymns for Twentieth and Twenty-first Sundays after Trinity, compiled by Mr. F. Gatward, organist and choir-master of St. Luke's Cathedral, Halifax, N.S. The numbers are taken from H.A. and M., but many of which are found in other hymnals:

## TWENTIETH SUNDAY AFTER TRINITY.

Holy Communion: 178, 318, 538, 556.

Processional: 33, 268, 427, 435.

Offertory: 232, 428, 437, 438.

Children's Hymns: 335, 339, 445, 573.

General Hymns: 196, 213, 222, 228, 429, 623.

## TWENTY-FIRST SUNDAY AFTER TRINITY.

Holy Communion: 270, 320, 324, 552.

Processional: 248, 260, 392, 478.

Offertory: 271, 295, 306, 518.

Children's Hymns: 194, 331, 335, 569.

General Hymns: 32, 277, 286, 301, 307, 520.

## OUTLINES OF THE EPISTLES OF THE CHURCH'S YEAR.

BY REV. PROF. CLARK, LL.D., TRINITY COLLEGE

Epistle for the twenty-first Sunday after Trinity.

Ephes. v. 10: "Be strong in the Lord."

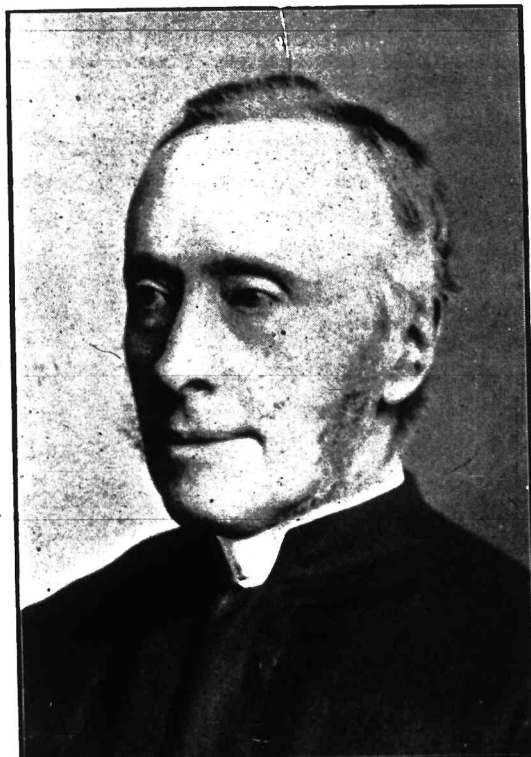
Few things more generally admired than strength, and rightly, it implies health, due development of powers. Physical strength and beauty a great endowment. Intellectual strength higher, as mind is greater than matter. Highest of all moral and spiritual strength. Of this St. Paul speaks. "In the Lord,"—strength like Christ's; derived from Christ; maintained in Christ.



MRS. SWALE, FOUNDRESS OF HOLY TRINITY CHURCH, TORONTO.



HOLY TRINITY CHURCH, TORONTO.



REV. GEO. WHITAKER, M.A., FIRST PROVOST OF TRINITY UNIVERSITY, TORONTO.

i. True strength is the strength of Christ. Of the same kind as that which He possessed and manifested.

1. His was the strength of love. (1) Ultimately the only true strength. Selfishness the root of weakness. (2) In Christ this strength was absolute. Pure, unsullied, unshadowed.

2. Love guided by a clear, unfaltering conscience. (1) Doubt and uncertainty an element of weakness. (2) Never found in Jesus. Examine His recorded words and deeds. Imagine Him in any circumstances.

3. Manifested in entire self-sacrifice. "Love seeketh not her own." (1) Here opposition between the world and Christ. Meekness (not violence) is strong and Godlike. (2) Sometimes acknowledged by the world. (3) In Jesus universal. He did not call for twelve legions of angels.

ii. The strength of Christ a revelation of our human weakness. Many imagine themselves strong. Forget failures. Compare themselves with others. Bring selves face to face with Christ.

1. In regard to temper and self-control; (1) e.g. Anger. Useful, implanted by God. (2) Jesus angry; but His anger always unselfish. (3) Try our anger by the characters of His. Often selfish, excessive, persistent.

2. Sloth—a kind of opposite extreme, yet also found in union. A loathsome form of weakness. Yet how frequent. (1) Duties omitted. (2) Opportunities neglected. How different! "He went about." No haste

or waste.

3. Influence of others upon us. (1) Many men fairly good if left to themselves. At least apparently free from grosser faults. (2) Grant that bound to make sacrifices for others. But how? One said, he would give his life for his country, but not his honour. Sacrifice self, but not God. (3) From the strength of Jesus Christ we may learn how weak we are.

iii. The attainment of strength not hopeless. Often we feel it to be so. We need encouragement, and here "Be strong."

i. The very possession of an ideal is strength. No utter defeat until that abandoned. When cast away, then despair or indifference. So long as "pursuing," we may be "faint," but not hopeless.

2. In the very sense of weakness there is hope. "When I am weak, then I am strong." (1) Failure the result of self-confidence. (2) To the lowly and self-distrustful grace is given.

3. Ample provision is made, and assurance is given by God. "Greater is He," etc. "My grace is sufficient." Let us dwell upon this. May be many defeats; yet the end victory. "I run not as uncertainly"—"I can do all things." The end not uncertain. "I have fought the good fight." "More than conquerors."