



Protection against the elements.

Government statistics show that many million dollars' worth of property is lost every year due to the neglect of painting. Rain and storms of all kinds wear out unprotected buildings in 20 years, which, if painted at regular intervals, would last 50 years. Is your property protected with good paint? You can double the life of your building by covering it every three or four years with a good paint. You must be sure, however, to get a paint that you know is reliable. Cheap paint in the long run is expensive, for it will not protect the surface; it soon powders or peels off. Good paint is economical, it covers more surface, looks better and lasts longer than cheap and shoddy paint. There is an S-W Paint and Varnish for every use. Ask your dealer for color cards and full information.—The Little Paint Man.

SHERWIN-WILLIAMS PAINTS & VARNISHES



Sherwin-Williams Paint, Prepared (SWP) is made from pure white lead, pure zinc, pure linseed oil, and the necessary coloring pigments and driers.



Sherwin-Williams Varnishes are made from the best gums, pure linseed oil, pure turpentine, and are thoroughly aged.

THE SHERWIN-WILLIAMS CO.

1000 PAINT AND VARNISH MAKERS
MONTREAL TORONTO WINNIPEG VANCOUVER



ELLIMAN'S EMBROCATION



FOR USE ON ANIMALS.

Sprains, Rheumatism, Curbs, Splints when forming, Sprung Sinews, Capped Hocks, Overreaches, Bruises, Broken Knees, Elliman's Royal Embrocation.

Sore Shoulder, Sore Udders of Cows not in Milk, For Sore Mouths in Sheep and Lambs, For Foot Rot in Sheep, Sprains in Dogs, Cramp in Birds, Elliman's Universal Embrocation.

FOR HUMAN USE.

Rheumatism, Lumbago, Sore Throat, from Cold, Croup at the Chest, Neuralgia from Cold, Chronic Bronchitis, Sprains, Backache, Bruises, Slight Cuts, Cramp, Soreness of the limbs after exercise, Elliman's Universal Embrocation.

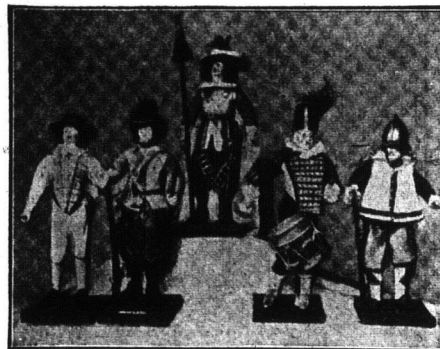
ELLIMAN, SONS & CO., SLOUGH, ENGLAND.

Muck as Manure.

Numerous inquiries have been received as to the value of peat and muck deposits for fertilizer purposes. When properly used, they are valuable. The material should first be air dried, then used in the stable to absorb the liquid manure for which purpose it is particularly adapted, and results in making the stables more sanitary. The liquid manure causes the peat to ferment and the result is the nitrogen is made more available as plant food. Many of our peat and muck deposits are very rich in nitrogen, containing upwards of one per cent. A mixture of peat, farm manure, say equal parts, and a little land plaster scattered in the stalls makes an excellent fertilizer. The land plaster "sweetens" the peat, neutralizing any acids, and the liquid manure causes fermentation and liberation of plant food in available forms. In European countries peat is put to excellent use as a fertilizer, and is a regular article of commerce. Many farmers where the manure is scant could materially supplement their supply by the use of peat. Often peat and marl or lime deposits are found close together and may be blended as used. Sandy soil and heavy clay soils are the ones most benefited by applications of peat and muck, as these supply humus, of which many of our soils stand sadly in need.—Harry Snyder, Prof. of Chemistry, Minn. Exp't Sta.

Fertilizing Vegetables.

Soil on which vegetables are grown should be made as rich as possible. An abundant supply of plant food is essential and must be furnished. The soil should be fed from time to time. Before



Officers and soldiers of the Seventeenth Century.

a crop is planted, the ground should be properly fertilized and if the crop is late in maturing, additional applications of fertilizer may be made. Plants take up their nutriment in liquid form. For this reason nitrate of soda, which is soluble in water, is often more effective than manure for vegetables. Commercial fertilizers contain very little water, therefore the soil must have sufficient moisture to make the fertilizer available, because the plants cannot use it without water. This is done by deep and thorough preparation of the soil, seeing the seed bed is fine all the way down to the bottom of the furrow. Coarse trash turned under makes the soil lumpy and coarse and breaks the capillary power of the soil to bring up moisture from below. Sometimes the land looks nice and fine on top when it is really thirsty. Vegetable matter is the greatest agent of all for holding water in the soil—that is decayed vegetable matter. As a fertilizer for vegetables, well rotted fine stable manure or compost is hard to beat, for the plant food it contains is not only available, but it holds sufficient plant life in itself to hold this plant food soluble. For vegetables, coarse green manure should never be used, as its action is too slow. Compost and fertilizer should be used together for vegetables. The compost, by holding moisture, helps make the commercial fertilizer available. Potatoes, turnips, cabbage and such vegetables require very large amounts of commercial fertilizer. Fertilizers should be thoroughly incorporated in the soil a week before planting.

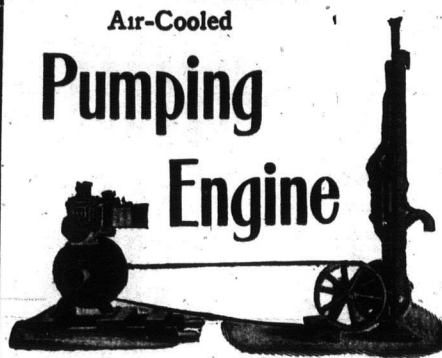
The Oil of the People.—Many oils have come and gone, but Dr. Thomas' Eucalypti Oil continues to maintain its position and increase its sphere of usefulness each year. Its sterling qualities have brought it to the front and kept it there, and it can truly be called the oil of the people. Thousands have benefited by it and would use no other preparation.

Manitoba

Air-Cooled

Pumping

Engine



Is a Marvel for Power!

Will pump any well up to 300 ft. Will run any hand power machine such as cream separator, churn, fanning mill, grindstone, etc. Guaranteed to start easy in winter or summer.

Cannot Freeze up or Overheat

Has enclosed crank case, with perfect splash lubrication.

A complete High Grade Power Plant

Weights only 225 lbs.

Sold under an absolute guarantee to give satisfaction.

Write to-day for descriptive literature and price.

We manufacture all sizes of Gasoline Engines up to 25 h.p. If interested in the large sizes, write for complete catalog.

The Manitoba Windmill and Pump Co. Limited

Brandon, Man., Calgary, Alta.

4 Fast Trains 4 DAILY

TO

New York

AND

Eastern Canada

VIA



Double Track Route

Modern equipment, unexcelled road-bed and dining car service, polite and attentive employees.

Coronation Sailings

Rates, reservation, and full information from

W. J. Quinlan,

General Agent, Passenger Dept
PHONE MAIN 7098,

260 Portage Ave., WINNIPEG, MAN.

Best Fruit Land

In British Columbia, "Carlin Orchards," Upper Okanagan Valley. Mild climate. Finest fruit grown without irrigation. Railway through property. Low prices, long term payment. Write for illustrated pamphlet M.

Rogers, Black & McAlpine, Vancouver, B.C.