

ON this page is illustrated an assortment of Patterns for

Ladies' and Misses'

## WAISTS,

from which many will no doubt make selections for dressy wear.

The Patterns can be had in the sizes mentioned, from Ourselves or from Agents for the Sale of our Patterns. In ordering, please specify the Numbers and Sizes (or Ages) desired.

THE BUTTERICK PUBLISHING CO.  
(LIMITED),



7183



7183



7183

Ladies' Full, Seamless Blouse-Waist, Closed at the Back and having a Fitted Body-Lining (Copyright): 11 sizes. Bust measures, 28 to 42 inches. Any size, 1s. or 25 cents.



7241



7241



7241



7241

Ladies' Evening Waist, Closed at the Back (To be Made High or Low Necked and with Long or Short Puff or Frill Sleeves) (Copyright): 13 sizes. Bust measures, 28 to 46 inches. Any size, 1s. or 25 cents.



7248



7248

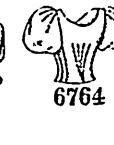


7248

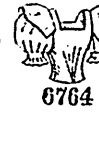
Ladies' Waist, with Full Outer-Body Outlining a Round Yoke Waist (Known as the Baby Waist) (To be Made High or Low Necked and with Full Length, Elbow or Short Sleeves) (Copyright): 13 sizes. Bust measures, 28 to 46 inches. Any size, 1s. or 25 cents.



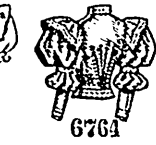
6764



6764



6764



6764

Ladies' Basque-Waist (Copyright): 13 sizes. Bust measures, 28 to 46 inches. Any size, 1s. or 25 cents.



7119



7119



7155



7155



6870



6870



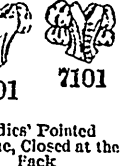
6870



7101



7101



7101

Ladies' Basque-Waist (Copyright): 13 sizes. Bust measures, 28 to 46 inches. Any size, 1s. or 25 cents.

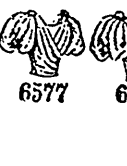
Ladies' Basque-Waist (To be Made with High or Round Neck and with Long or Short Sleeves) (Copyright): 13 sizes. Bust measures, 28 to 46 inches. Any size, 1s. or 25 cents.

Ladies' Surplice Waist (Copyright): 13 sizes. Bust measures, 28 to 46 inches. Any size, 1s. or 25 cents.

Ladies' Pointed Basque, Closed at the Back (To be Made with a High Neck or with a Low Round, Pointed or Square Neck and with Long, Elbow or Short Sleeves) (Copyright): 15 sizes. Bust measures, 28 to 48 in. Any size, 1s. or 25 cts.



6577



6577



6577



6963



6963



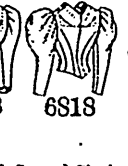
6963



6818



6818



6818



6818

(Ladies' Waist (Known as the Princess May Bodice) (Copyright): 13 sizes. Bust measures, 28 to 46 inches. Any size, 1s. or 25 cents.

Ladies' Basque-Waist (Copyright): 13 sizes. Bust measures, 28 to 46 inches. Any size, 1s. or 25 cents.

Ladies' Basque, with Curved Closing Edges (Copyright): 13 sizes. Bust measures, 28 to 48 inches. Any size, 1s. or 25 cents.



6900



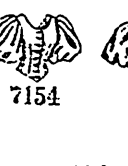
6900



6900



7154



7154



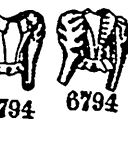
7154



6794



6794



6794



6794

Ladies' Basque, Closed at the Side (Perforated for Round, Square or Pointed Neck) (Copyright): 13 sizes. Bust measures, 28 to 46 inches. Any size, 1s. or 25 cents.

Misses' Basque (To be Made with High, Round or V Neck and with Long or Short Sleeves) (Copyright): 7 sizes. Ages, 10 to 16 years. Any size, 10d. or 20 cents.

Misses' Basque-Waist (Copyright): 7 sizes. Ages, 10 to 16 years. Any size, 10d. or 20 cents.



6901



6901



6901



7104



7104



7247



7247



7247



6979



6979

Misses' Basque, Closed at the Side (Perforated for Round, Square or Pointed Neck) (Copyright): 7 sizes. Ages, 10 to 16 years. Any size, 10d. or 20 cents.

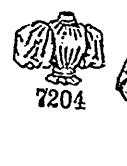
Misses' Basque (Copyright): 7 sizes. Ages, 10 to 16 years. Any size, 10d. or 20 cents.

Misses' Waist, with Full Outer-Body Outlining a Round Yoke (Known as the Baby Waist) (To be Made High or Low Necked and with Long or Short Sleeves) (Copyright): 7 sizes. Ages, 10 to 16 years. Any size, 10d. or 20 cents.

Misses' Surplice Waist (With Fitted Lining) (Perforated for V Neck in Front) (Copyright): 7 sizes. Ages, 10 to 16 years. Any size, 10d. or 20 cents.



7204



7204



7204



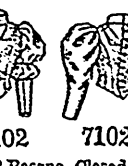
7032



7032



7032



7102



7102



7043



7043

Misses' Full Seamless Blouse-Waist, Closed at the Back and having a Fitted Body-Lining (Copyright): 7 sizes. Ages, 10 to 16 years. Any size, 10d. or 20 cents.

Misses' Puffed Waist (Copyright): 7 sizes. Ages, 10 to 16 years. Any size, 10d. or 20 cents.

Misses' Basque, Closed at the Back (To be made with a High Neck or with a Low Round, Square or Pointed Neck and with Long or Short Leg-O'-Mutton or Puff Sleeves) (Copyright): 7 sizes. Ages, 10 to 16 years. Any size, 10d. or 20 cents.

Misses' Shirred Waist (With Fitted Lining) (Copyright): 9 sizes. Ages, 8 to 16 years. Any size, 10d. or 20 cents.