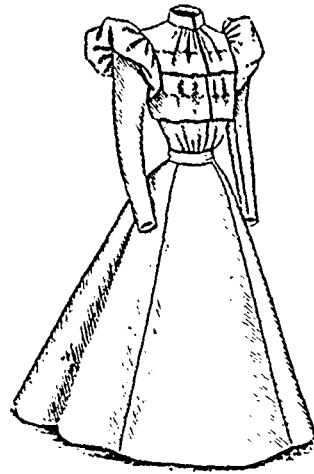
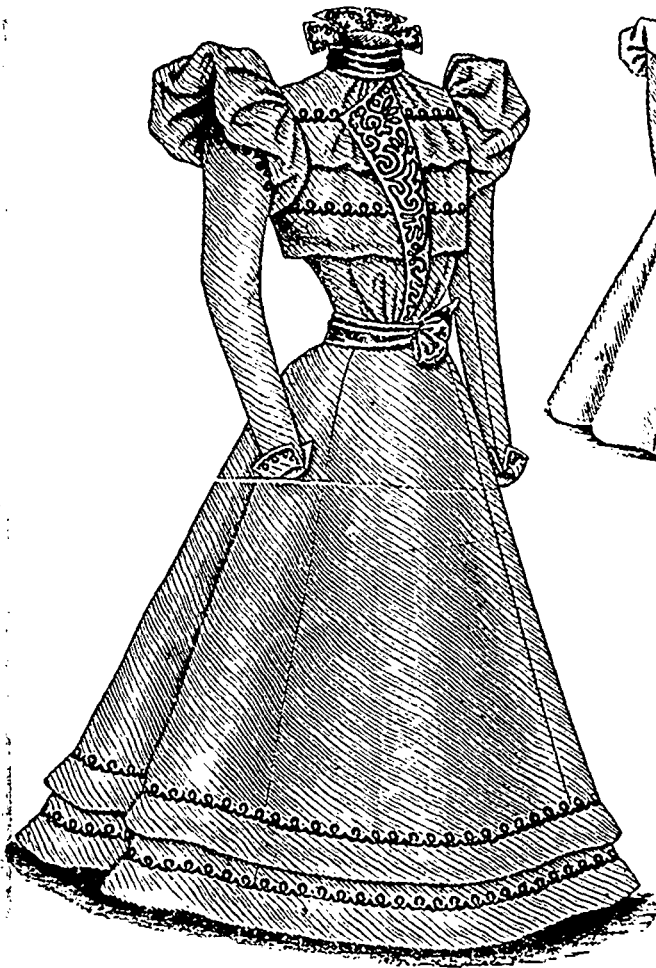


silken, woollen or cotton texture. A very stylish costume of golden-brown taffeta silk was made like this and trimmed with cream lace edging and ribbon. For cotton goods the mode is highly commended, its simplicity and good style being calculated to display effectively the new designs in cotton weaves.

lines are very graceful between smooth side-fronts which are fitted by under-arm and single bust darts. Side-back gores and a curving center seam complete the close adjustment of the tea-gown, and the shaping of the parts produces stately flute-like folds that spread gracefully to the lower edge. The tea-gown may be made with a slight train or in round length, as preferred. The fanciful collar, which may be used or not, is shaped to form a point at the corner of the back and two square tabs over each shoulder and its ends terminate in points at the bust; the collar is bordered with a frill of lace edging, which is continued in jabot style down the front edges of the side-fronts. The one-seam sleeves are arranged over coat-shaped linings and are gathered at the top and for a short distance along the side edges; they stand out in short puffs at the top and follow the outline of the arm closely below, and the wrists are decorated with a frill of lace edging. The standing collar is covered with a wrinkled ribbon which ends in double loops at each side of the center of the back, and a frill of lace edging rises above the col-



8961

8961

Front View.

LADIES' COSTUME, CONSISTING OF A TUCKED WAIST AND A SEVEN-GORED SKIRT.

(For Description see Page 284.)

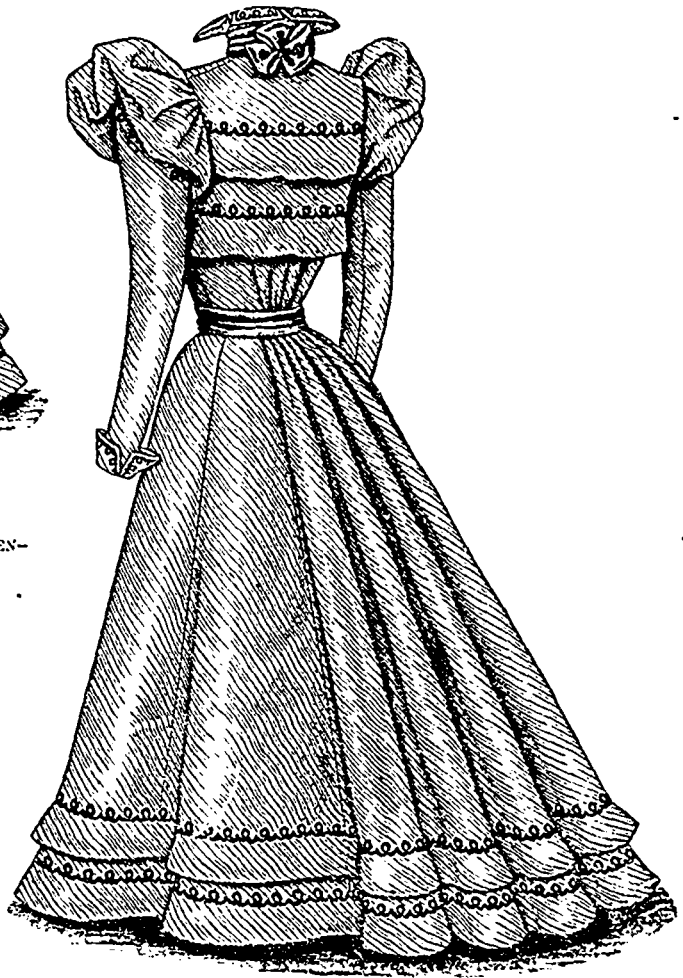
We have pattern No 8957 in ten sizes for ladies from thirty to forty-two inches bust measure. For a lady of medium size, the costume requires thirteen yards of material twenty-two inches wide, or ten yards and a half thirty inches wide, or nine yards and seven-eighths thirty-six inches wide, or seven yards and a fourth forty-four inches wide, or six yards and a fourth fifty inches wide. Price of pattern, 1s. 8d. or 40 cents.

LADIES' TEA-GOWN OR WRAPPER. (TO BE MADE WITH A SLIGHT TRAIN OR IN ROUND LENGTH AND WITH OR WITHOUT THE FANCY COLLAR.)

(For Illustrations see Page 290.)

No. 8965.—By referring to figure No. 150 W in this magazine, this tea-gown may be seen differently made up and trimmed.

The tea-gown is here pictured made of dove-gray crepon and decorated with lace edging and ribbon. The full center-front is gathered at the top and falls free from the neck over Princess lining-fronts that are fitted by double bust darts and single under-arm darts and closed at the center; it is slashed at the center to a convenient distance for a closing and its free



8961

Side-Back View

lar at the sides and falls prettily between the ribbon loops. Soft, clinging materials or plain or fancy silk are, as a rule, chosen for tea-gowns. Silk tea-gowns may be elaborately decorated with lace edging, and pale shades of cashmere or crepon and sometimes vailing are adorned with rows of narrow ribbon