

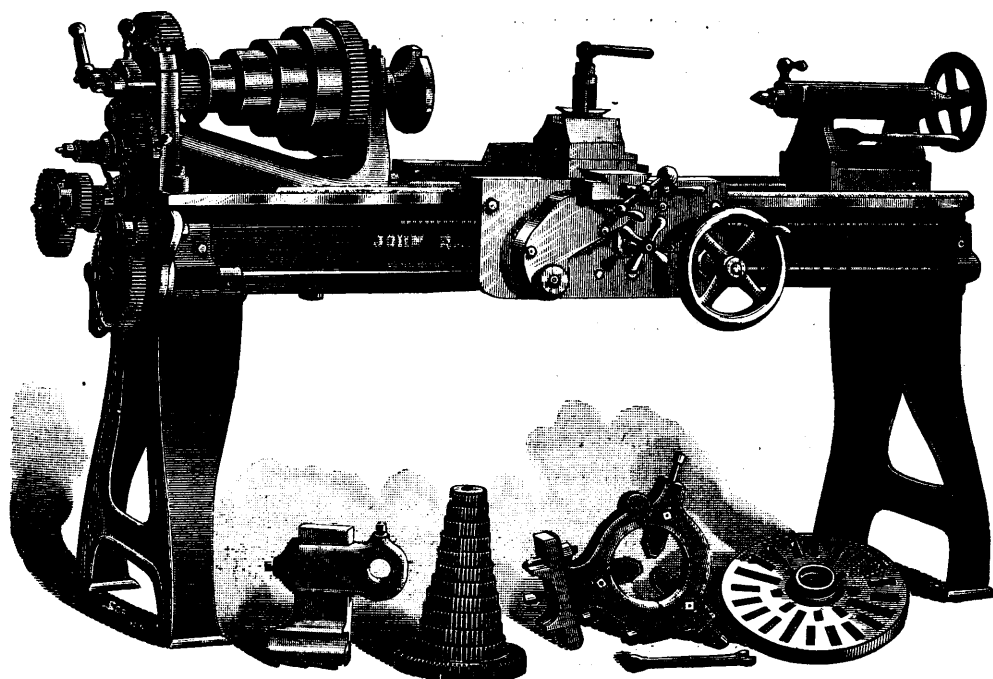
Canada Tool Works,

JOHN BERTRAM & SONS

DUNDAS, ONT.

Manufacturers
of
Machinists' Tools
and
**Woodworking
Machinery.**

LATHES,
PLANERS,
DRILLS,
MILLING
MACHINES,
PUNCHES,
SHEARS,
BOLT
CUTTERS
SLOTTING
MACHINES,
MATCHERS
MOULDERS,
TENONERS,
BAND SAWS,
MORTICERS,
SAW BENCHES



16-in. LATHE.

Locomotive and Car Machinery, Special Machinery, Price List and Photographs on application.

Warerooms: Permanent Exhibition, Toronto; Polson Engine Co., 38 Yonge St.; Machinery Supply Ass'n, Montreal.

Geo. F. Blake Manufacturing Co.,

BUILDERS OF

SINGLE AND DUPLEX

Steam and Power

Pumping Machinery



BOSTON,

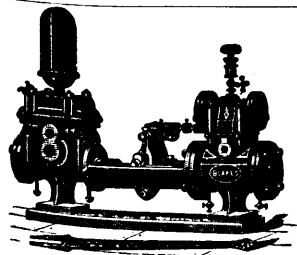
111 FEDERAL STREET.

NEW YORK,

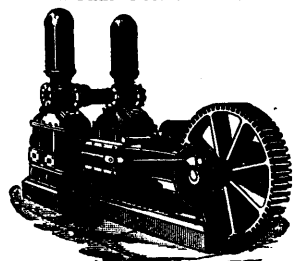
95 & 97 LIBERTY STREET.

SEND FOR ILLUSTRATED CATALOGUE.

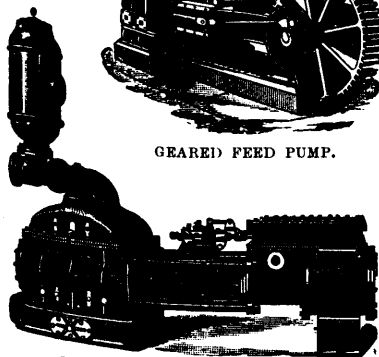
These goods may be seen at the Permanent
Exhibition 63 to 69 Front Street West, Toronto.



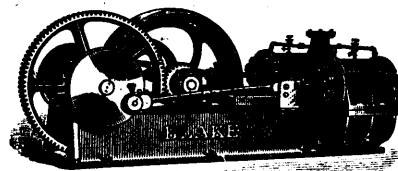
BOILER FEED PUMP.



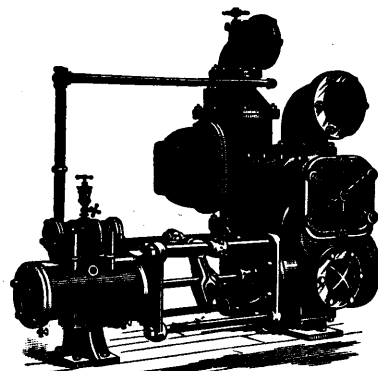
GEARED FEED PUMP.



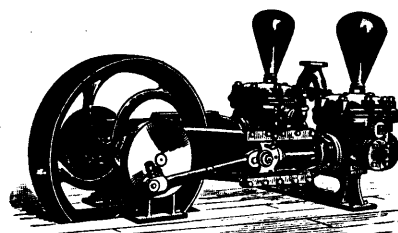
DUPLEX COMPOUND ENGINE



AIR COMPRESSOR.



AIR PUMP AND CONDENSOR.



BELT PUMP