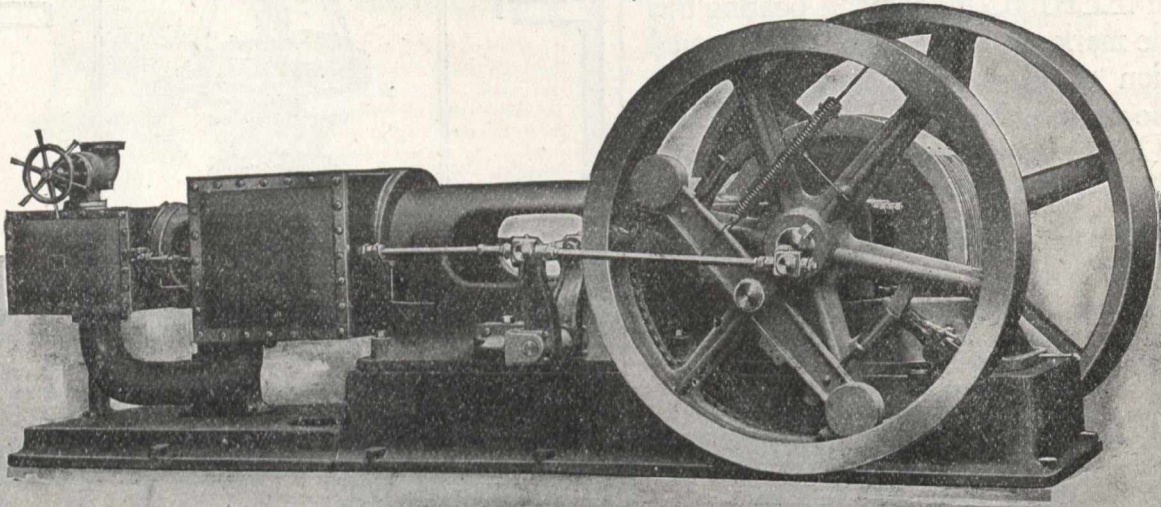


Waterous Engine Works Co.

BRANTFORD, CANADA.



The above cut shows a 19 and 32 by 24 Tandem Compound Automatic McEwen Engine. Four of these are in use in Southern Ontario operating 400 K. W. Generators.

Write for our latest Bulletin and Prices.

PUMPING MACHINERY

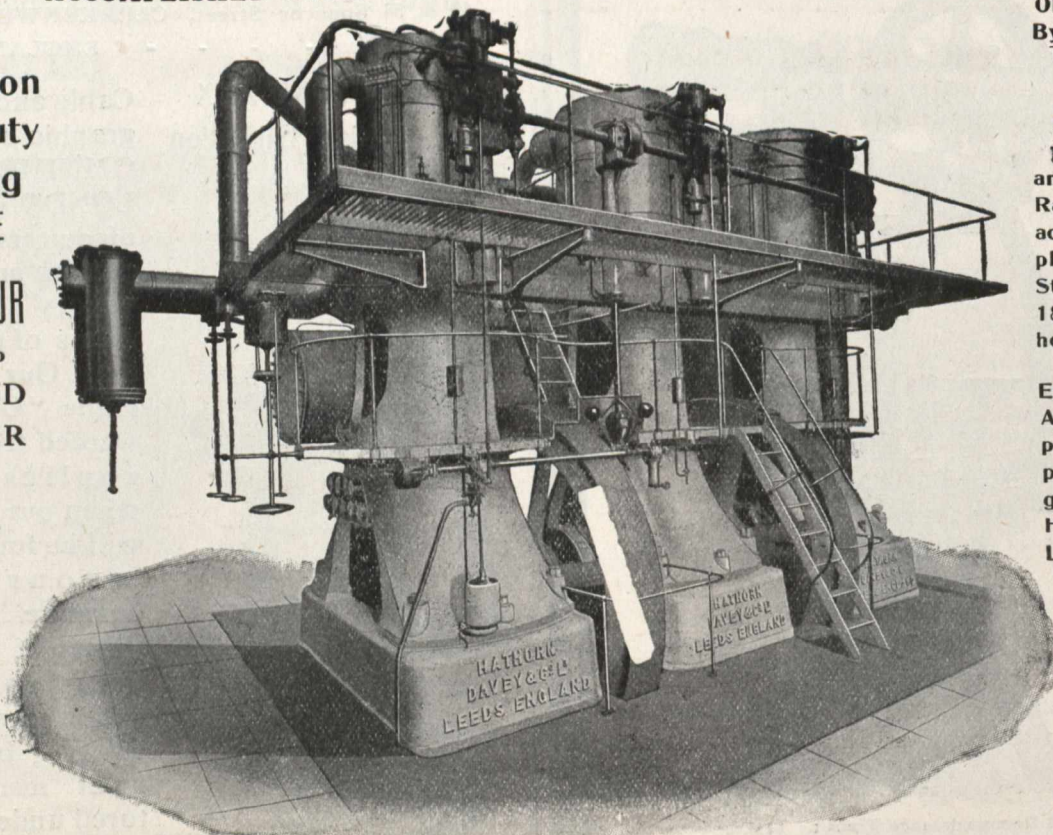
"THE RESULTS FAR OUTDISTANCE ANYTHING THAT HAS EVER BEEN PREVIOUSLY ACCOMPLISHED WITH A PUMPING ENGINE."--Professor Orr's Report

**TRIPLE
Expansion
High-Duty
Pumping
ENGINE**

ONE OF FOUR

supplied to
**THE RAND
WATER
BOARD.**

MAKERS OF
Pumping
Machinery
for Water-
works,
Sewage
Works,
Mines, etc



OFFICIAL TRIAL
By Professor Orr,
Transvaal Uni-
versity.

**ENGINE
DIMENSIONS**

Cylinders 23, 43
and 64 in Diam.
Rams, 3 Single
acting, Direct cou-
pled. Stroke 3 ft.,
Steam Pressure,
180 lbs. Super-
heated, 120 Deg.
Fah.

ENGINE RESULTS
Actual Water Pump-
ed into Reservoir
per hour 106,353
gallons, Effective
Head 1 in One
Lift 975.5 feet.

DUTY

In water actual-
ly delivered in
to Reservoir
183.6 Million
foot lb., per
1000 lb. of
steam.

Combined Me-
chanical Effici-
ency of Engine
and Pumps 93.41%

World's Record for Steam Economy

HATHORN DAVEY & CO., LTD., LEEDS, ENGLAND
Sole Canadian Agents. **PEACOCK BROTHERS, ENGINEERS.** Canada Life Building, MONTREAL.