

# ONTARIO WOMAN'S FORTUNE

Freed From That Weak, Languid, Always Tired Feeling, by Lydia E. Pinkham's Compound.

Thessalon, Ont.—"I cannot speak too highly of your medicine. When my appetite is poor and I have that weak, languid, always tired feeling, I get a bottle of Lydia E. Pinkham's Vegetable Compound, and it builds me up, gives me strength, and restores me to perfect health again. It is truly a blessing to women, and I cannot speak highly enough of it. I take pleasure in recommending it to others."

Women who are suffering from those distressing ills peculiar to their sex should not lose sight of these facts or doubt the ability of Lydia E. Pinkham's Vegetable Compound to restore their health.

There are probably hundreds of thousands, perhaps millions of women in the United States who have been benefited by this famous old remedy, which was produced from roots and herbs over 30 years ago by a woman to relieve woman's suffering. If you are sick and need such a medicine, why don't you try it?

If you want special advice write to Lydia E. Pinkham Medicine Co. (confidential) Lynn, Mass. Your letter will be opened, read and answered by a woman and held in strict confidence.

## Guide-Advocate

Watford, Ont. PUBLISHED EVERY FRIDAY. Subscription—\$1.00 per annum in advance. \$1.50 if not so paid.

ADVERTISING RATES.

Space	One Year	Half Year	3 Months
One column	\$60	\$35	\$20
Half column	35	20	12
One fourth column	20	12	8
One eighth	12	8	5
One twelfth	8	5	3

Merchandise advertisers will be allowed a change of matter every two weeks. Weekly changes can be had at a slight extra cost. Copy of changes must be printer's hands by Wednesday afternoon. TRANSIENS—First insertion per line, 5 cents; subsequent insertions 4 cents each time per line. 12 lines makes one inch. BUSINESS CARDS—Six lines and under, per year \$5 00. LOCALS—10c. per line each insertion. Minimum charge 25 cents. Advertisements without specific directions will be inserted till forbid and charged accordingly.

HARRIS & CO. PROPRIETORS

## Guide-Advocate

HARRIS & CO. PROPRIETORS. WATFORD, SEPTEMBER 13, 1912.

### NOTE AND COMMENT.

Five thousand Mexicans have stopped revolting and crossed over into Texas to pick cotton for high wages—at any rate, the pay is higher than in the insurgent army. Peace often gives war a swat in the eye in these commercial times.

During the past four years the sum of \$307,739.75 has been spent in the County of Oxford in building good roads, and to-day there are few, if any counties, which have better roads for light or heavy traffic.

Action is to be taken to investigate the charge that a meat combine exists in Canada. The investigation will include the cold storage question and the high prices of butter, eggs and other food products.

The Toronto Telegram states a pretty well-known fact when it says that the small property owner "pays tax on perhaps ninety per cent. of the selling price of his home, while the large property owner escapes with taxation on fifty or sixty per cent. of the selling price of his real estate." The assessment

**Every Woman**  
is interested and should know about the wonderful **MARVEL Whirling Spray**.  
The new Vaginal Spray. Best "Most convenient." It cleanses instantly. Ask your druggist for it.

If he cannot supply the MARVEL, accept no other, but send stamp for literature book—sent. It gives full particulars and directions. Available to ladies. **WINDSOR SUPPLY CO.** Windsor, Ont. General Agents for Canada.

law of Ontario requires radical amendment.

The state board of health of Ohio is about to lead a state wide fight on rats. Secretary E. F. Campbell is sending out in the current issue of the bulletin of this board, an address to the local health officers all over the state urging upon them the importance of stamping out the rat pest in the state in view of the danger of the bubonic plague to the United States.

The Stratford Beacon says:—"Mr. J. H. Fairbank, of Petrolia, writes to the Globe that one way of reducing the price of beef would be to stop eating veal, citing the fact that it took 928 calves to supply Toronto alone for one week, which, if kept till three years old, would have produced over eleven hundred thousand pounds of beef. There seems to be force in his contention, as up to a certain point cattle improve by age for food purposes in quality as well as quantity, and at the present prices of beef cattle farmers could profitably feed calves until they became heaves. And there does not seem to be much danger of the price falling below a profitable point before three years have elapsed."

The people of Ontario and through her the whole Dominion are to be congratulated on the maple leaf as a national anthem. It lends itself easily to every design, as, whether in its pristine green or in the hundred and one colors of autumn, it is ever beautiful. But where Canada is especially fortunate is in the fact that the maple leaf cannot be mistaken for any other leaf or thing. Even the school boy essaying his first drawing lesson seldom fails to make it look like a maple leaf. It may not be perfect, but few maple leaves are. This you will discover this fall when you go forth to make a collection of the beautiful things. There are scarcely two of exactly the same color or contour. They vary without limit, yet there is no mistaking the most imperfect for anything but a maple leaf.

In some respects the first volume of Canada's census is saddening, for it puts in concrete form—in figures which are beyond denial—the long-acknowledged depopulation of many of Ontario's towns and villages. It is disheartening to note that out of 140 incorporated villages, exactly half have decreased in population in the last decade. Out of 126 towns, 42—exactly one-third—show a similar decrease, and of the 84 which have remained stationary or grown, 31 are in Newer Ontario. The two great factors in the depopulation of these smaller places are the migrations to the city and to the West. The young folks are looking for excitement and big profits. Their departure from town, village and countryside results in poorly worked farms and business inertness in the smaller centres of population. It may be inevitable, but it is not, altogether a desirable condition of affairs. There is a substantial and a certain living on many farms which the younger generations have deserted. With these repopulated, the trade in town and village would improve, and the falling off in population would be checked. Many of those who have left the farm for the lure of the city and the gold of the West would have done better, in the end, at home. And it would have been better for Ontario had they stayed there.

### Deafness Cannot Be Cured

by local applications, as they cannot reach the diseased portion of the ear. There is only one way to cure deafness, and that is by constitutional remedies. Deafness is caused by an inflamed condition of the mucous lining of the Eustachian Tube. When this tube is inflamed, it is swollen and it is entirely closed. Deafness is the result, and unless the inflammation can be taken out and this tube restored to its normal condition, hearing will be destroyed forever; nine cases out of ten are caused by Catarrh, which is nothing but an inflamed condition of the mucous services.

We will give One Hundred Dollars for any case of Deafness, (caused by catarrh) that cannot be cured by Hall's Catarrh Cure. Send for circulars, free. F. J. CHENEY & CO., Toledo, O. Sold by Druggists, 75c. Take Hall's Family Pills for constipation.

### A Note of Warning.

There has been issued, by direction of the Minister of Agriculture at Ottawa, a conspicuous poster calling the attention of potato growers to the importance of examining their crop to ascertain

whether or not it is infected with "Potato Canker." The hanger shows in natural colors a potato plant the whole yield of which is affected by the disease. It also shows the appearance of individual tubers in which the Canker has started to work. Growers who discover suspicious symptoms of the disease in their crop are requested to send affected specimens to the Dominion Botanist, Experimental Farm, Ottawa. The poster is issued as Farmer's Circular No. 3, of the Division of Botany and is being distributed by the Publications Branch of the Department of Agriculture.

A TONIC FOR THE DEBILITATED.—Parmelee's Vegetable Pills by acting mildly but thoroughly on the secretions of the body are a valuable tonic, stimulating the lagging organs to healthful action and restoring them to full vigor. They can be taken in graduated doses and so used that they can be discontinued at any time without return of the ailments which they were used to ally.

### SMART DESK FITTINGS.

Anne Boleyn Doll Duster and Animal Penwipers.

Dusters in the shape of attractively dressed dolls with leather brushes concealed beneath their silken skirts are among the unique novelties in writing desk equipments. Lacking a leather duster, which may be made from felt cut into narrow strips, a good sized round paint brush will answer perfectly well, and to the ball of the handle which, of course, must be cut off, may be attached the trunk and head of a doll.

Because of her wide skirts and looped up sack the colonial dame doll is a good design for a desk duster cover, but never still is the early Victorian dressed doll or the Anne Boleyn. However, any period may be adopted so long as the dress completely covers the feet and is not scant; also of the figure class are the penwipers representing rabbits, cats, lions and elephants made of cloth and velvet and wearing ribbons, medals or trappings. A favorite among these is a prize English bull-dog made of tan velvet and wearing a miniature spiked collar.

Paper cutters are of both animal and bird shapes cut from ivory, mother-of-pearl, mahogany, ebony or jade and equipped with long, slender blades of nickel, steel or bone.

### Collar and Cuffs of Turkish Toweling.

A pretty and practical use to which to put Turkish toweling is an attractive collar and cuff set for the coat or even for the frock of linen. The collar is cut on the lines of the simple Dutch collar and scalloped at edge with a colored floss. Above the edge dots of color are used, and running from four or five of the scallop points is a little vine effect. Loops of velvet matching the color used for embroidery hold the collar together at front, and about the edge of the velvet loops appears a narrow scallop of Irish crochet.

The cuffs to complete these sets are made about three and one-half inches in depth and finished with scallops, dots and vines to match the collar.

### Outdoor Floral Decorations.

Pottery jars and vases are, of course, very attractive for holding flowers when used on the porch as a decoration, but the most suitable receptacles

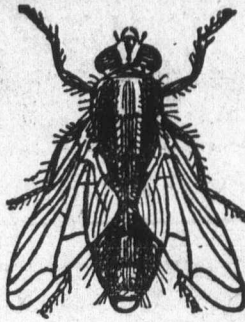


FIELD DAISIES AND FERNS.

are those of birch bark, suggesting as they do the spirit of the woods.

The illustration shows an attractive arrangement of field daisies and ferns in a tall birch bark vase.

FOR sunburn, windburn, cracked lips, chaps, roughness or irritation after shaving, try **NA-DRU-CO** Witch Hazel Cream. Its creamy ingredients soothe and soften the outer skin, while the Witch Hazel penetrates and heals the deeper tissues. Delightful after shaving or washing. 25c. a bottle, at your druggist's. NATIONAL DRUG AND CHEMICAL CO. of Canada, Limited. 187



There are no dead flies lying about when

# WILSON'S FLY PADS

are used as directed. All Druggists, Grocers and General Dealers sell them.

## MODERN FURNITURE.

Sewing Machines, Mason & Risch Pianos, Gramophones, String Instruments, Music Books and Sheet Music.

New Line Curtain Stretchers

A full stock of Edison Records kept in stock and new ones received each month as they are issued.

Repairs kept in stock for all kinds of String Instruments.

Several Second-hand Sewing Machines in stock that will be sold cheap!

Comfort, Elegance, Durability, and Value are features that our goods are noted for.

Give us a Call and let us see what we can do for you.

## HARPER BROS.

Fine Furniture. Phone 31. Funeral Directors.

## A. D. HONE

## PAINTER and DECORATOR

Specialist in Hand Painted Decorations.

The Best Work at Reasonable Prices. Estimates Furnished

A COMPLETE LINE OF

Samples of WALL PAPER on Hand.

When you have work in his line let him figure on it.

### Tempestuous Jupiter.

Careful study of the planet Jupiter has afforded some rather interesting figures concerning its rate, or rather rates, of rotation. These do not affect the round numbers in which the equatorial velocity of Jupiter's rotation is usually stated—viz, about 25,000 miles per hour. But they furnish additional proof that the motions visible on the great planet's surface are not uniform from year to year. For about twelve years the equatorial region appears to have experienced an acceleration of velocity. Relatively to the surface some thirty degrees north or south Jupiter's equator rushes ahead with hurricane speed, between 200 and 300 miles an hour.—Cincinnati Commercial Tribune.

### Not Very Flattering.

Mary met Emily on the street. They had not seen each other for many years. "Why, how do you do?" exclaimed Mary, effusively, topping off the salutation with a few vague pecks at Emily's face. "Now, this is delightful," said Emily, who was older than Mary. "You haven't seen me for eleven years, and yet you knew me at once. I couldn't have changed so dreadfully in all that time. It flatters me." Said Mary: "I recognized your bonnet."—Popular Magazine.

### Natural Enough.

Jolkley—I once heard a man say that he would rather be an ex-convict than anything else he could think of. Polkley—The ideal how eccentric! Jolkley.—Not at all. The man was in the penitentiary at the time.—Philadelphia Ledger.

### Mean.

Husband—My, but I wish I had your tongue! Wife—So that you could express yourself intelligently? Husband.—No; so that I could stop it when I wanted to.—Detroit Free Press.

### Not Many.

The man who is always crossing bridges before he reaches them doesn't get over many streams.—Chicago Record-Herald.

**Special HOLIDAY SALE**

To make room for a large shipment of goods, we are, for the remainder of August, offering all OAK ROCKERS and UPHOLSTERED GOODS at A DISCOUNT OF 15 PER CENT. FROM REGULAR PRICES.

A Full Line of SIDEBOARDS, EXTENSION and PARLOR TABLES, BEDROOM SUITES, BRASS and IRON BEDS, MATTRESSES, Etc., in Stock.

**W. C. Browne & Son.**

**Judge's Court of Revision**  
Township of Warwick.  
NOTICE IS HEREBY GIVEN that a Court will be held, pursuant to The Ontario Voters' List Act, by His Honor, the Judge of the County Court of the County of Lambton, at the TOWN HALL, WARWICK VILLAGE, Monday, September 23rd, 1912, at ten o'clock in the forenoon, to hear and determine the several complaints of errors and omissions in the Voters' List of the Municipality of the Township of Warwick for 1912. All persons having business at the Court are required to attend at the said time and place. Dated the 26th day of August, 1912. N. HERBERT, Clerk of the Municipality.

The Wyoming Enterprise will open a book and stationery store in connection with the printing office.

## DARK ROOM



Every child on reaching seven years should have the eyes examined. Many children have defects, and it often happens that the only effect is this: through work on the better eye while the weaker eye frequently loses vision entirely. With proper treatment this trouble will be wholly cured. If accompanied by parents, we are glad to examine children's eyes free of charge.

CARL A. CLARKE, OPTICIAN, WATFORD, ONT.

### Floating Dock for Mo

London, Sept. 1.—The huge dock, Duke of Connaught, Barrow for a Montreal ship started on its leisurely voyage the Atlantic in tow of two Dutch tugs.

It is the second largest dock world. Over 700 feet in length, to be launched in three sections capable of receiving the largest ship either built or planned. Allowing for an average speed of knots, the voyage to Montreal about six weeks, but should the tug be bad, two months or more before she reaches the other side. The dock is 180 feet wide and is supported by eighteen inches in circumference cables also connect the dock.

A party of the builders' work making the voyage, some of the houses on the dock, while of quarters on the tugs. The tug carries an extra cargo of coal, to be supplied to the tugs in mid-voyage. Each tug carries for six months and seventy frozen water.

## CASTOR

For Infants and Children

The Kind You Have Always

Bears the Signature of

Jonathan Wellington, son of Wellington of Moore township, Sarnia hospital last Friday buried at Moore on Sunday Wellington, of Forest, his Mrs. Berger, of Detroit, Mr. S. J. Rawlings, Miss Ora Mr. and Mrs. Ambrose V. Garner Wellington, and Mr. Verne Wellington all at the funeral, deceased being a nephew Wellington.

Mother Graves' Worm Exterminator does not require the help of any gavage medicine to complete. Give it a trial and be convinced.

A snail moves at the rate of hundredths of an inch a second.

## STAGE LINE

WATFORD AND WARWICK STATION. Warwick Village every morning, day, reaching Watford at 11:30 a.m., leaving Watford at 8:45 p.m. Passengers conveyed on reasonable terms. C. LAKE

WATFORD AND ARKONA STATION. Arkona at 9 a.m. Wisbeach returning leaves Watford at 8:45 p.m. and freight conveyed on reasonable terms. E. J. EVANS Prop.

## INSURANCE

### J. H. HUMPHREYS

AGENT FOR FIRE, ACCIDENT AND SICK COMPANIES. REPRESENTING Five Old and Reliable Fire Companies.

If you want your property insured call on J. H. HUMPHREYS and get

—ALSO AGENT FOR—

P. R. Telegraph and Canada Loan and Saving Co.

Ticket Agent For C. P. R. old to all points in Manitoba, and British Columbia.

## GRAND TRUNK RAILWAY

### TIME TABLE

Trains leave Watford Station

GOING WEST  
Accommodation, 27 ..... 8  
Accommodation, 29 ..... 2  
Chicago Express, 5 ..... 9

GOING EAST  
Ontario Limited, 46 ..... 12  
Accommodation, 28 ..... 3  
New York Express, 2 ..... 3  
Accommodation, 30 ..... 5

C. Vaal, Agent