

Municipal Council

WEEKLY MEETING.
The regular weekly meeting of the Council was held yesterday afternoon. The Mayor presided and Councillors Messrs. G. H. Collier, Ryan, and others were present.
Communication was read from the Prime Minister, in which he expresses his willingness to meet a deputation of the Council to discuss Municipal matters mentioned in communication forwarded him.
Mr. F. E. Pittman, General Passenger, Nfld. Govt. Railway, informed the Council they were now preparing a descriptive, illustrated booklet for distribution to the United States and in other parts of Europe; that it was his intention to make the booklet as attractive as possible, and in this connection would have any pictures of Bowring Park available, as well as one of the first points of call for ships coming to the country by the Bowring Park line, etc. The Council do not express any views or cuts of this matter but will endeavour to secure the same for him.
Application was read from E. M. O'Connell for position of Returning Officer for the forthcoming Municipal Election. At the present time the Council are taking up this matter, but application was ordered placed on the agenda for future reference.
Mr. M. Organ applied for position of Appraiser. There being no objection the application was ordered to be put on the agenda.
Application of W. Chancy for position of driver of motor sprinkler was referred to the Council.
Application for supply of parts to the Dump Truck was awarded F. J. Ryan.
The request of R. H. Volsey, of the Bowring Park Tax Service, the Council met at its next regular meeting; it is to be given Mr. Martin to the Bowring Park house No. 3 Central Street, opposite St. Sebastian St., subject to the approval of the City Engineer. At the reading of weekly reports from the various departments, as well as that of the Medical Officer of Health and the passing of requisitions and weekly accounts, the meeting adjourned.

"The Wolf Man"
A Novel Love Story

Gilbert, whose work in "Cameo" and other notable Fox productions, has made him one of the most popular idols of the screen, does his best acting in the latest production from the Fox studios, "The Wolf Man," which opened a three day run at the Majestic Theatre last night. The role of the Honorable Gertrude, victim of a dual personality, is played by the influence of drink, Gilbert portrays the typical English gentleman at one point and with startling contrast, becomes "The Wolf Man," without pity or conscience, slayer. Vivid scenes of luxurious life in London, are followed by the starkness of existence in the back woods of Canada, where the terrible Gerald is driven by his obsession.
Johnson and Evans scored a knockout. Their selections were easily the best that we have heard for some time and it is a safe assertion that they are more popular with movie goers to-day than at any time during their brief theatrical career. The following items were featured: "Kentucky," "Will I Do," "Goo Goo Goo Good-bye," "In the Garden of my Heart," "Still Have Someone Else After Me."
The same bill will be repeated to-morrow night and the special matinee for to-morrow afternoon and to-morrow night.
The Majestic Management is making special preparations for Masterpiece Drama, a most stupendous production "Monna Vanna" which will be on Monday. Full particulars in tomorrow's paper.

Nomination Meeting

A meeting of St. Andrew's Society last night, the following officers were nominated:—
President—H. D. Reid.
V.P.—R. G. Reid.
V.P.—D. McIntosh.
Secretary—L. McDougall.
The committee of twenty were also nominated, nine of whom will be elected on the election on Thursday night.

P.A. Annual Meeting

All friends of the Society for the Protection of Animals will note that the annual general meeting of the Society takes place at 8 o'clock to-morrow in the Grenfell Hall. His Excellency the Governor will preside and will address the meeting which, it is hoped, will be largely attended.

LOWER TEMPERATURE.—The thermometer at the Valley Nurseries registered 28 degrees of



BETTERING FORMER VALUES

That is primarily the object of this Seasonal Sale--Our

FEBRUARY CLEAN-UP SALE

3rd. Week Values



Offerings from the House Furnishing Section

SHEETINGS.

60 inch twilled unbleached Sheetings, strong quality, fine service giving cloth for children's beds. Special . . . **62c.**

WHITE SHEETINGS.

72 inch twilled Snow-white Sheetings, nice soft finish, offers a real good value at our Sale Price. Special . . . **\$1.28**

CRETONNES.

3-pieces of 50 inch Cretonnes, nice warm tones, Rose, Green and Navy, with wide floral borders, very pretty and remarkably serviceable. Reg. \$1.00 yard. Special . . . **89c.**

STRIPED HANGINGS.

48 inch Roman Striped Hangings, Rose and Green and Blue and Tan, through and through collar, make nice graceful hangings. Reg. \$1.20 yard. Special . . . **\$1.05**

TICKINGS.

32 inch Blue and White, strong herring-bone Tickings. Reg. \$4.80 pair. February Special . . . **54c.**

WHITE SHEETS.

Hemmed plain white Sheets 84 x 90 size, good quality, heavy and durable for family wear. Reg. \$3.50 pair. February Sale Price . . . **\$2.98**

WHITE MARCELLA BEDSPREADS.

Selected—because of their value unusualness; 76 x 82 size, beautiful quilts to put away for Springtime appearance; up to \$4.95. February Sale Price . . . **\$3.78**

LACE CURTAINS.

42 pairs of White Lace Curtains, 2 1/2 yard size, nice all-over patterns, wave edged, listed for clearance. Reg. \$4.80 pair. February Sale Price . . . **\$4.35**

That we have gone about it—with a thoroughness is best realized by your attendance here each succeeding week. It is true we have held many great saving Sales in the past, but never to our knowledge have you been invited to a real clearance of such magnitude as our present February-clean-up-Sale. Stocks must move, and move quickly when we start, price-slashing. To-day's a good time to get acquainted with Star Values at this Store.

REMNANTS!

Never before have we had such an enormously good, assortment of Remnants. No matter what you may require a short end for—you will find it here, and at the moment, you will find it remarkably low in price. These Remnant piles are distributed throughout the store, conveniently arranged for overhauling. Come! look them over you will find innumerable opportunities to pick up useable lengths for every purpose.

RE-PRICED FOR RIDDANCE

Single Blankets

CRIB BLANKETS—Separate Blankets, in plaids and plain Greys, heavy fleece finish, 34 x 40 size. Reg. 85c. February Sale . . . **69c.**

COTTON BLANKETS—Pieced Cotton Blankets.

Grey shades, 56 x 74 size, Pink and Blue borders. Special each . . . **\$1.15**

MOROCCO—Plain Brown and plain Green Morocco.

splendid soft quality for upholstering. Reg. \$1.00 yard. Special . . . **87c.**

DRESS GOODS

DRESS GOODS—54 inch Dress Woolens.

In Black with fine White pin stripe, suitable for Suits, Costumes, Skirts, or spring Coats. Reg. \$1.50 yard. February Sale Price . . . **\$1.35**

DRESS SERGES—54 inch fast Navy Dress Serge.

all wool quality. Reg. \$3.00. February Sale Price . . . **\$2.65**

DOUBLE WIDTH TWEEDS—Just the right kind for boys wear.

strong heavy make, in Brown Heather shades, 16 inches wide. Special . . . **\$1.18**



LADIES' TRIMMED HATS Slashing Reductions

COSTUMES, JUMPERS, JUMPER SUITS, Etc. All combine to make this a Banner Week

LADIES' CARDIGANS—Snug, Cozy Wool Cardigans.

Fawn trimmed White with V-neck and long sleeves, side pockets; assorted sizes. **\$2.75**

Regular \$3.00. Special . . . **\$2.75**

VELLINGS—18 inch fine Silk Vellings.

shades of Mauve, Pink, Champagne, Purple, Dark Green and White. Regular 40c. Special . . . **19c.**

WINCEYETTE NIGHTGOWNS—Ladies' Cream Winceyette Nightgowns.

beautifully finished with silk torchon lace, square neck and short sleeves. **\$2.35**

Reg. \$2.50. Special . . . **\$2.35**

VESTS and TRAPPERS—Nice soft quality, Silk and Wool mixture.

cream shade, long sleeves; sizes to fit half year to two years. Reg. 87c. \$1.00. Special . . . **87c.**

LADIES' COSTUMES

A Special Clearance Sale of Ladies' English Wool Tweed Costumes, with tailored collar, pockets and button trimmings; shades of Grey, Fawn and Brown. Just a small assortment. Reg. \$10.00. Special . . . **\$6.98**

LADIES' VESTS—Splendid garments in pure White Fleece Jersey.

V-neck, strap style with drawstring; assortment of sizes. Reg. \$1.10. Special . . . **98c.**

JUMPER SUITS

Distinctive style in all Wool Mottled Flannel; sizes 36 to 40; shades of Oatmeal, Nile, Strawberry and Grey, roll collar, long sleeves, trimmed with black military braids. Very limited. **\$13.95**

number. Reg. \$16.00. Special . . . **\$13.95**

BEADED GIRLS—Fashionable Girles, one and three-quarter yards long.

showing up well in Royal Blue, Midnight Blue and Black. Regular \$1.20. Special . . . **69c.**

LADIES' JUMPERS in Canton Crepe, Jersey, etc. Very charming shades, showing up splendidly in their different materials, rich looking affairs, in Beseda, Saxe, Grey, Rust, Brown and Paisleys, round neck, short sleeves, girle and banded waist, embroidered and beaded. Reg. \$4.50. Special . . . **\$3.49**



GLOVES

figure conspicuously in this sale



SUEDE GLOVES—Dainty Grey Suede.

excellent value this week, sizes 5 1/2 to 6 1/2 with 2 home wrists. Reg. \$1.50. Special . . . **\$1.25**

SILKETTE GLOVES—Several dozen pairs of Ladies' Black and Coloured Silkette Gloves on sale.

charming quality, shades mostly Beaver and Grey. Special . . . **79c.**

FABRIC GLOVES—Washable White Suede Fabric Gloves.

double weight, with buttoned wrist. February Sale Price . . . **38c.**

JUST TO HAND 500 BOXES

of those splendid quality "CORTICELL" KNITTING WOOLS

in all wanted shades. The wools for every purpose. **19c. Ball.**

The Men's & Boys' Section

MEN'S CAPS—Great assortment of Classy Velour and Tweed Caps for men, newest back style, unbreakable visor and all Silk lined. February Special . . . \$2.60

TWEED PANTS—Special range of Men's dark Grey and dark Brown Tweed Pants, neatly finished in every way. February Sale Price . . . \$3.85

PULLOVERS—Boys' Wool Pull-overs, sleeveless, V neck. Camel shades—a boy appropriate one of these to-day. Feb. Special . . . \$2.10

CASHMERE JERSEYS—Beautiful fine texture, with Polo Collar and 2 button neck front; Navy, Saxe, Brown and Cream shades; 24 to 32 size. Special . . . \$2.39

BOYS' PANTS—Great strong Donegal Tweed Pants for boys up to 12 years, mostly Greys and Browns, if he is hard on pants, give him a pair from this range. Special . . . \$1.85

UNDERWEAR—See our special in Underwear for men this week—fine ribbed fleeced Jersey in mottled Grey shade; 34 to 44 sizes. Special . . . \$1.10

CUFF LINKS—Rolled Gold finish with pearl centres, cham fastening, put up a pair in a box. Special . . . 59c.



SPRING SHOE STYLES

Offering Noticeably Good Values NOW IS THE TIME TO BUY THEM



LADIES SHOES—Pretty two strap models in soft Black Vici Kid, Cuban heels, rubber tipped, very natty footwear. February Special . . . \$4.38

LADIES' SHOES—Ladies' Dark Tan Oxford, in a nice soft kid, medium heel, very comfortable. February Special . . . \$3.15

MEN'S BOOTS—Laced Dark Tan Calf Boots, fitted with Rubber Heel, perforated outline. Special . . . \$4.25

LADIES' SHOES—Rich looking mahogany Calf Shoes, ideal for Spring wear, laced style, medium heel, pretty perforated outline. February Special . . . \$5.25

CHILDREN'S BOOTS—Dark Tan and Black Kid Boots, laced and buttoned style, sturdy soles and heels; sizes 3 to 6. Special . . . \$1.18

GIRLS' BOOTS—Dark Tan Boots, nice Calf weight, medium height, laced style, with rubber heels, away under regular price; sizes 8 1/2 to 2. Special . . . \$1.98



A Newsy Column for the Housewife

BUFFET DAMASK.

18 inch White Damask for sideboard cloths, nice quality. The yard . . . **29c.**

BOLSTER CASES

Good ones, 18 x 35 size, showing wide hemstitched border. Reg. \$2.50. Special . . . **\$2.18**

BUREAU SETTS.

Four piece Setts in dainty White Linen, hemstitched and embroidered. Reg. \$1.05. Special . . . **\$1.30**

CUSHION COVERS.

Linen Crash Cushion Covers with frilled border, beautifully embroidered. Reg. \$1.25. Special . . . **98c.**

SERVETTES.

Coloured Damask Napkins, 18 x 18 size, Blue and Lemon shade. Special each . . . **16c.**

CUSHION COVERS.

White Muslin, showing hemstitched frill and embroidered, 22 x 22 size; up to \$1.10 each. February Special . . . **85c.**

CUSHION COVERS.

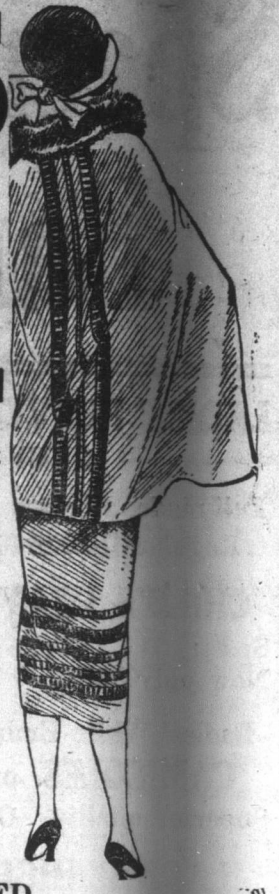
In strong serviceable linen Crash with stamped patterns. Dollar covers. Special . . . **79c.**

SCRUBBERS.

20 x 20 size, great strong Crash quality, hemmed. Special . . . **15c.**

HEARTH BROOMS.

Long hardwood handled White Brooms, of the better grade. Special . . . **33c.**



BOXED STATIONERY.

Containing 100 sheets of note paper and 100 envelopes. The Box . . . **37c.**

WASTE BASKETS.

of collapsible stiff paper in a range of fancy patterns, each . . . **15c.**

SCRUBBERS.

20 x 26 size, soft, strong wear-resisting quality. Reg. 30c. for . . . **25c.**

SHELVINGS.

Oil Cloth Shelvings with fancy borders. 9 inch. Special . . . **10c.**

12 inch. Special . . . **14c.**

FACE CLOTHS.

White Turkish quality, with coloured borders 3 for 25c. Special . . . **25c.**

GUEST TOWELS.

15 x 20 size, Huck material with lace ends. February Special each . . . **29c.**

Children's Dresses

Winsome models in Sponge Cloths, shades of: Grey, Fawn, Saxe and Brown, long sleeves, Peter Pan Collar, girdle and pockets, silk trimmed; sizes to fit 7 to 10 years. Reg. to \$4.25. Special . . . **\$3.75**

INFANTS BONNETS—White Cord Velvet Bonnets, lace and ribbon trimmings of Pink and Sky, season-able. Special . . . 79c.

ROYAL SOCIETY DRESSING JACKETS

Very dainty stamped designs on Cotton Crepe; Slip-over style, round neck and short sleeves. Each piece all ready to finish off. Offered now at nearly HALF PRICE. Regular \$1.70 for . . . **98c.**

Gorgeous Ribbons--new

Some splendid Taffeta Ribbons have just come to hand; 3 inches wide, shades of Pink, Sky, Saxe, Mauve, Cardinal and Black. Ribbons for every purpose; worth 19c. 30c. yard. Special . . . **19c.**

INFANTS' LEGGINGS—In White Wool, they extend to waist, pullover style, there is a long season of usefulness ahead for these. Special . . . 79c.

Hosiery Values



CASHMERE HOSE—Ladies' Plain Cashmere Hosiery in shades of Nude, Fawn, M o l e, Beaver, Putty and Black, up to 95c. pair. February Sale Price . . . 79c.

GIRLS' AND BOYS' HOSE—assorted ribs in fast Black English Cashmere, always a good looking Hosiery; sizes to fit 4 to 12 years. Reg. to 85c. February Sale Price . . . 69c.

WOOL BOOTIES—Pink and White and all White Booties with fancy tops. February Sale Price . . . 48c.

SILK AND WOOL HOSE—Popular line with the Ladies, plain finish, pretty mixtures in Grey and White, Coating and White, and Nigger and White. Lisle top, toe and heel. February Sale Price . . . 85c.

WOOL CASHMERE HOSE—Ladies' fast Black English Wool Cashmere Hosiery, plain, seamless finish, excellent quality. February Sale Price . . . \$1.25

STAMPED MATS

We have just opened up a full range of these, made of heavy weight Hessian, assorted sizes, beautiful and simple designs to follow.

1 1/2 yard size. Special . . . **34c.**

1 3/4 yard size. Special . . . **36c.**

2 yard size. Special . . . **39c.**