

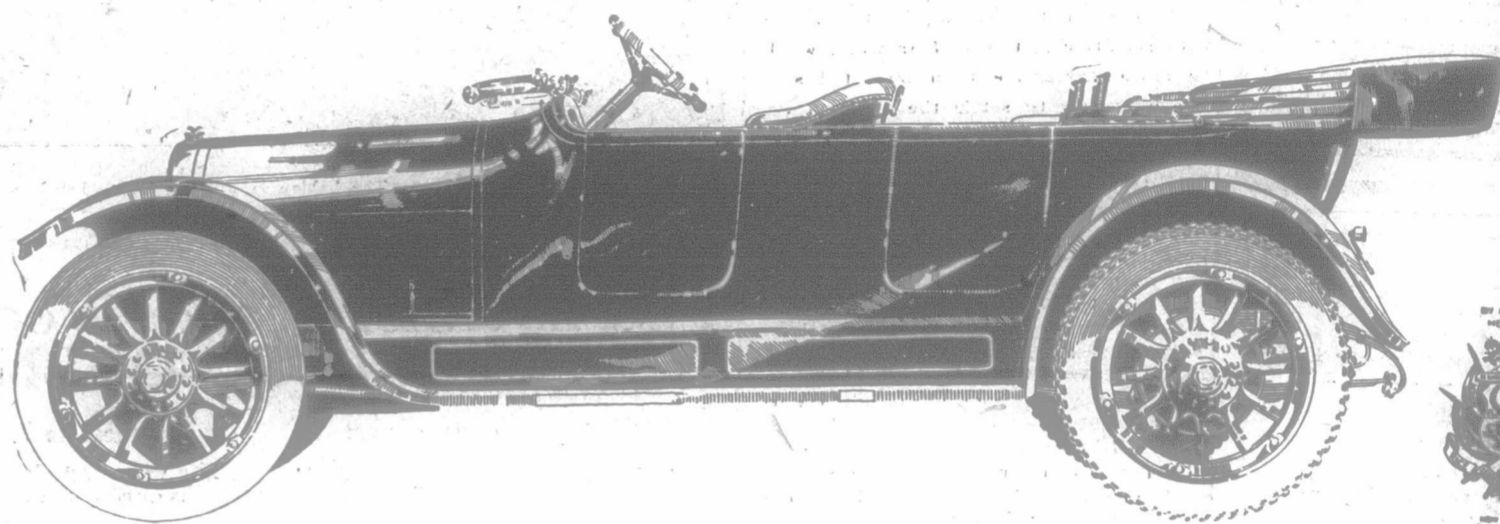
1916 Six

Model 83

Overland  
TRADE MARK

\$1600

f. c. b. Hamilton, Ont.



## Increased Production Effects Big Price Reduction

**WITH** our production capacity increased to 600 cars per day we are in a position to offer the 1916 Overland Six at the remarkably low price of \$1600. You will, we believe, find that this car is considerably under the market price of other Sixes having equal or similar specifications.

Large roomy seven passenger touring car

Quiet 45 horsepower six cylinder bloc motor

Efficiently lubricated—unusually economical

35 x 4½ inch tires all around; non-skids on rear

125-inch wheelbase; high tension magneto ignition

All electric control buttons on steering column

### Specifications

Seven passenger touring  
125-inch wheelbase  
45 horsepower motor  
High-tension magneto ignition  
Two-unit electric starter  
Electrically lighted  
Headlight dimmers

Full-streamline body design  
Genuine leather upholstery  
One-man top  
Pockets in all doors  
Rain-vision, ventilating  
type windshield built in  
Full floating rear axle

Extra long under-slung  
rear springs  
35 inch x 4½ inch tires;  
smooth tread in front;  
non-skids in rear  
Left-hand drive  
Center control

Demountable rims  
One extra rim  
High grade magnetic  
speedometer  
Electric horn  
Electric control buttons on  
steering column

**GRASP** the full significance of its size as denoted by wheelbase, seating capacity, tires; of its generous, efficient power equipment; of its superior ignition; of its every comfort and convenience; of its beautiful lines. Then realize that the Overland price for these extremes of luxury is only \$1600.

The new Overland Sixes are being demonstrated and delivered now. See the Overland dealer in your town  
Model 83 four cylinder, five passenger touring car—\$1050 f. o. b. Hamilton, Ont.

Catalog on request. Address Dept. 494

The Willys-Overland of Canada, Limited, Hamilton, Ont.