

THIS STORE COMPRISES BOTH

THIS STORE SERVES YOU WELL.  
THIS SPRING'S MERCHANDISE BETTER THAN EVER.

A SPECIAL SHOWING THIS WEEK FOR MEN AND WOMEN

**If the "Price" Sounds Reasonable and the "Quality" is Not There,  
Better Leave It Alone**

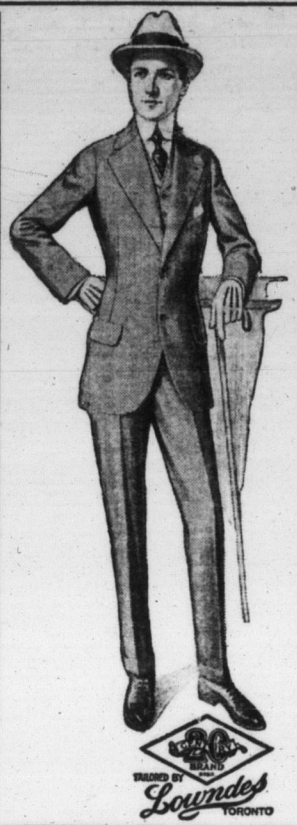
## There's a Reason for Our Growing Shoe Trade

**Derby and McCready Makes for Men.** The best lines we can procure at reasonable prices. They are all guaranteed and we assure you of their quality. We have a large stock of boots in black and chocolate, \$3.50 to \$4.50. Lines that would seem reasonable at \$1.00 we sell at our close trade-building price, \$3.50; some leather-lined box kip, some patent colt.

Buy your family shoe supplies here. You will like our "qualities" and "values."

**J. N. CURRIE & CO.**

### ***A New Dressmaking Department Added***



Call and get a copy of our amusing book, "The House That Jack Built". It's full of pictures, rhymes and reason, that you will enjoy as well as the children. Free to all.

**Mitchell & Hagerty, Glencoe, Ont.**



## The Transcript

Published every Thursday morning from THE CANADIAN BUSINESS, 100 King Street, Gloucester, Ontario. Subscription to all addresses in Canada and all points in the British Empire, \$1.00 per year; to addresses in the United States, \$1.50 per year—payable in advance.

Advertisements—The Canadian Business has a large and constantly growing circulation. A limited amount of advertising will be accepted, at moderate rates. Prices on application.

Job Printing—The Canadian Business has superior equipment for turning out promptly books, pamphlets, circulars, posters, blank forms, programmes, cards, envelopes, office and wedding stationery, etc.

Advertisements—Contributions and make remittances payable to A. E. SUTHERLAND.

THURSDAY, APRIL 8, 1915.

**VIOLET MASSAGE NEW LUX-  
URIOUS BARBER TREAT.**

**Tonsorialist Shoots Rays Into  
"Patient" and He Arises  
a "New Man."**

If you should wander into Mr. H. Moore's barber shop and spy your favorite tonsorialist shoving large electric sparks about another customer's hair, using only his fingers to accomplish this result, don't turn and run.

And don't try to guess how he does it, for you would ruffle your brain and give up, believing that the man who had shaved your face for the last three or four years had been studying magic and neglected to let you in on his secret.

Just pretend you know all about it. Stroll leisurely to a chair and stay there until the familiar "next" is yours.

In the meanwhile watch closely and you will see your predecessor receive the latest electrode treatments. Yep, that's it—electrode.

Should the customer call for the entire list, here are a few of the things the barber will do to him: Darken his grey hair, produce a rosy color to his cheeks that will last from five to ten hours, cure that terrible headache, chase away warts, moles, pimples, blackheads, etc., and end with the newest massage and shampoo.

If you notice the operation, you will see the customer holds a small glass tube that shoots violet streams of electricity. These sparks go up the victim's fingers, up the arm, around the shoulder, and jump out of the ends of the hair when the barber disturbs the locks with his fingers.

The razor manipulators call the apparatus the barber's X-ray, and say it will perform a hundred feats never heard of.

The stream of sparks is the entire secret, and whatever your ailment is, the barber can effect a cure by turning the violet ray on the location of the pain.

### H. S. Term Examinations.

Percentages obtained from Christmas to Easter.

## Form I

C. McBean  
S. McKellar  
A. Barker  
M. Baldwin  
S. Sutton  
C. Hicks  
R. Lethbridge  
M. Gardiner  
M. Huston  
M. Gardner  
E. Campbell  
H. Sutherland  
A. Moore  
A. McRae  
C. McIntosh  
E. Leitch  
R. Owen  
R. Glen  
F. Smith  
I. Urquhart  
J. Eddie  
C. Black  
A. Southard.  
L. Dalgety  
R. Pierce  
B. King  
M. Mitchell  
A. Aldred  
S. Eddie  
G. Hurley  
M. Fryer  
A. Gardner

\* Present for one examination

## Form II

C. Miller  
A. McArthur  
T. Marsh  
H. Moss  
W. Lethbridge  
W. Arthur  
S. McCutcheon  
L. Eddie  
McK. McArthur  
J. McLauchlan  
W. McVicar  
F. Giles  
A. McCallum  
A. Beattie  
M. Galbraith  
J. For  
A. D. McDonald  
E. Marsh  
F. Campbell  
E. Smith  
Mc Alpine  
F. Keith  
J. McGregor  
H. Silcox  
G. Grant  
Brown  
C. Cook

## Form III.—Normal Entrance.

M. Munro.  
G. McLachlan  
N. Farrell  
E. Reyecraft  
W. Poole  
V. Burchiel  
H. Broad  
R. Gubbins  
M. Little  
N. McCallum  
E. McAlpine  
M. Morrison  
Alice Campbell  
F. McLachlan  
A. E. Aldred  
Agnes Campbell  
G. Campbell  
J. Humphries  
J. Coulter  
P. Leitch  
A. Mawhinney

**Matriculation.**

E. Bromhead  
W. Poole  
N. McCallum  
A. Campbell  
G. Campbell  
A. E. Aldred

Form IV.

G. C. Squire  
A. Calhoun  
N. Archer  
M. McLean  
M. Bayne  
M. Chalk  
M. Leitch  
T. Code

### School Reports.

Report of S. S. No. 11, Aldborough,  
for March.  
a absent for exam.  
Subjects — geography, composition,  
arithmetic, reading, art.  
Fourth, — Jean McRae 68 per cent.,  
Finlay Sutton 64, Elsie Sutton 61,  
Emerson King 60, Bessie Blain 55,  
Muriel MacIntosh 50, Clayton Liddle  
43½, Gordon Liddle 20½.  
Third, — Agnes Campbell 76, Ina  
Downie 72, Helen Campbell 61½, Chan-  
geary 59½, Roy Downie 57, Dan  
Winger 53½, Myrtle Downie 46½,  
Albert Downie 40, Rose Woodward

## YOUR POCKET or the MIDDLEMEN'S ?

Between what you pay the dealer and what you get in fence, there's at least 50% "selling-expense," which can't add one cent to *value*—but does add several cents *per rod* to cost. You put that several cents PER ROD in the "middleman's" pocket, when you buy fence through the dealer. You put that saving in YOUR OWN POCKET when you buy

**PAGE FENCE---DIRECT---FREIGHT PAID**

because you buy direct from factory to farm. You pay us only a single small profit over and above the *actual* cost. You save the 50% "selling-expense," in the shape of HIGHEST QUALITY FENCE.

When you're offered "other" fence at PAGE prices—bear this fact in mind. YOU MUST PAY THE "SELLING-EXPENSE." So that fence sold through the dealer at PAGE prices or less—*must be of lower quality, to make up the "selling-expense."*

# PRICE LIST

## HEAVY FENCE

No. of feet	Weights	Range inside apart	Spacing all around	Price in Old Canada
5	37	22	3, 9, 10, 10	—
6	37	22	6 1/2, 7, 8 1/2, 7 1/2, 8	24.21
7	37	22	6 1/2, 7, 8 1/2, 7 1/2, 8	26.34
8	43	22	6 1/2, 7, 8 1/2, 7 1/2, 8	26.36
9	43	22	6 1/2, 7, 8 1/2, 7 1/2, 8	28.49
10	43	22	6 1/2, 7, 8 1/2, 7 1/2, 8	30.62
11	43	22	6 1/2, 7, 8 1/2, 7 1/2, 8	32.75
12	43	22	6 1/2, 7, 8 1/2, 7 1/2, 8	34.88
13	43	22	6 1/2, 7, 8 1/2, 7 1/2, 8	37.01
14	43	22	6 1/2, 7, 8 1/2, 7 1/2, 8	39.14
15	43	22	6 1/2, 7, 8 1/2, 7 1/2, 8	41.27
16	43	22	6 1/2, 7, 8 1/2, 7 1/2, 8	43.40
17	43	22	6 1/2, 7, 8 1/2, 7 1/2, 8	45.53
18	43	22	6 1/2, 7, 8 1/2, 7 1/2, 8	47.66
19	43	22	6 1/2, 7, 8 1/2, 7 1/2, 8	49.79
20	43	22	6 1/2, 7, 8 1/2, 7 1/2, 8	51.92
21	43	22	6 1/2, 7, 8 1/2, 7 1/2, 8	54.05
22	43	22	6 1/2, 7, 8 1/2, 7 1/2, 8	56.18
23	43	22	6 1/2, 7, 8 1/2, 7 1/2, 8	58.31
24	43	22	6 1/2, 7, 8 1/2, 7 1/2, 8	60.44
25	43	22	6 1/2, 7, 8 1/2, 7 1/2, 8	62.57
26	43	22	6 1/2, 7, 8 1/2, 7 1/2, 8	64.70
27	43	22	6 1/2, 7, 8 1/2, 7 1/2, 8	66.83
28	43	22	6 1/2, 7, 8 1/2, 7 1/2, 8	68.96
29	43	22	6 1/2, 7, 8 1/2, 7 1/2, 8	71.09
30	43	22	6 1/2, 7, 8 1/2, 7 1/2, 8	73.22
31	43	22	6 1/2, 7, 8 1/2, 7 1/2, 8	75.35
32	43	22	6 1/2, 7, 8 1/2, 7 1/2, 8	77.48
33	43	22	6 1/2, 7, 8 1/2, 7 1/2, 8	79.61
34	43	22	6 1/2, 7, 8 1/2, 7 1/2, 8	81.74
35	43	22	6 1/2, 7, 8 1/2, 7 1/2, 8	83.87
36	43	22	6 1/2, 7, 8 1/2, 7 1/2, 8	86.00
37	43	22	6 1/2, 7, 8 1/2, 7 1/2, 8	88.13
38	43	22	6 1/2, 7, 8 1/2, 7 1/2, 8	90.26
39	43	22	6 1/2, 7, 8 1/2, 7 1/2, 8	92.39
40	43	22	6 1/2, 7, 8 1/2, 7 1/2, 8	94.52
41	43	22	6 1/2, 7, 8 1/2, 7 1/2, 8	96.65
42	43	22	6 1/2, 7, 8 1/2, 7 1/2, 8	98.78
43	43	22	6 1/2, 7, 8 1/2, 7 1/2, 8	100.91
44	43	22	6 1/2, 7, 8 1/2, 7 1/2, 8	103.04
45	43	22	6 1/2, 7, 8 1/2, 7 1/2, 8	105.17
46	43	22	6 1/2, 7, 8 1/2, 7 1/2, 8	107.30
47	43	22	6 1/2, 7, 8 1/2, 7 1/2, 8	109.43
48	43	22	6 1/2, 7, 8 1/2, 7 1/2, 8	111.56
49	43	22	6 1/2, 7, 8 1/2, 7 1/2, 8	113.69
50	43	22	6 1/2, 7, 8 1/2, 7 1/2, 8	115.82
51	43	22	6 1/2, 7, 8 1/2, 7 1/2, 8	117.95
52	43	22	6 1/2, 7, 8 1/2, 7 1/2, 8	120.08
53	43	22	6 1/2, 7, 8 1/2, 7 1/2, 8	122.21
54	43	22	6 1/2, 7, 8 1/2, 7 1/2, 8	124.34
55	43	22	6 1/2, 7, 8 1/2, 7 1/2, 8	126.47
56	43	22	6 1/2, 7, 8 1/2, 7 1/2, 8	128.60
57	43	22	6 1/2, 7, 8 1/2, 7 1/2, 8	130.73
58	43	22	6 1/2, 7, 8 1/2, 7 1/2, 8	132.86
59	43	22	6 1/2, 7, 8 1/2, 7 1/2, 8	135.00
60	43	22	6 1/2, 7, 8 1/2, 7 1/2, 8	137.13
61	43	22	6 1/2, 7, 8 1/2, 7 1/2, 8	139.26
62	43	22	6 1/2, 7, 8 1/2, 7 1/2, 8	141.40
63	43	22	6 1/2, 7, 8 1/2, 7 1/2, 8	143.53
64	43	22	6 1/2, 7, 8 1/2, 7 1/2, 8	145.66
65	43	22	6 1/2, 7, 8 1/2, 7 1/2, 8	147.80
66	43	22	6 1/2, 7, 8 1/2, 7 1/2, 8	149.93
67	43	22	6 1/2, 7, 8 1/2, 7 1/2, 8	152.06
68	43	22	6 1/2, 7, 8 1/2, 7 1/2, 8	154.20
69	43	22	6 1/2, 7, 8 1/2, 7 1/2, 8	156.33
70	43	22	6 1/2, 7, 8 1/2, 7 1/2, 8	158.46
71	43	22	6 1/2, 7, 8 1/2, 7 1/2, 8	160.60
72	43	22	6 1/2, 7, 8 1/2, 7 1/2, 8	162.73
73	43	22	6 1/2, 7, 8 1/2, 7 1/2, 8	164.86
74	43	22	6 1/2, 7, 8 1/2, 7 1/2, 8	167.00
75	43	22	6 1/2, 7, 8 1/2, 7 1/2, 8	169.13
76	43	22	6 1/2, 7, 8 1/2, 7 1/2, 8	171.26
77	43	22	6 1/2, 7, 8 1/2, 7 1/2, 8	173.40
78	43	22	6 1/2, 7, 8 1/2, 7 1/2, 8	175.53
79	43	22	6 1/2, 7, 8 1/2, 7 1/2, 8	177.66
80	43	22	6 1/2, 7, 8 1/2, 7 1/2, 8	179.80
81	43	22	6 1/2, 7, 8 1/2, 7 1/2, 8	181.93
82	43	22	6 1/2, 7, 8 1/2, 7 1/2, 8	184.06
83	43	22	6 1/2, 7, 8 1/2, 7 1/2, 8	186.20
84	43	22	6 1/2, 7, 8 1/2, 7 1/2, 8	188.33
85	43	22	6 1/2, 7, 8 1/2, 7 1/2, 8	190.46
86	43	22	6 1/2, 7, 8 1/2, 7 1/2, 8	192.60
87	43	22	6 1/2, 7, 8 1/2, 7 1/2, 8	194.73
88	43	22	6 1/2, 7, 8 1/2, 7 1/2, 8	196.86
89	43	22	6 1/2, 7, 8 1/2, 7 1/2, 8	199.00
90	43	22	6 1/2, 7, 8 1/2, 7 1/2, 8	201.13
91	43	22	6 1/2, 7, 8 1/2, 7 1/2, 8	203.26
92	43	22	6 1/2, 7, 8 1/2, 7 1/2, 8	205.40
93	43	22	6 1/2, 7, 8 1/2, 7 1/2, 8	207.53
94	43	22	6 1/2, 7, 8 1/2, 7 1/2, 8	209.66
95	43	22	6 1/2, 7, 8 1/2, 7 1/2, 8	211.80
96	43	22	6 1/2, 7, 8 1/2, 7 1/2, 8	213.93
97	43	22	6 1/2, 7, 8 1/2, 7 1/2, 8	216.06
98	43	22	6 1/2, 7, 8 1/2, 7 1/2, 8	218.20
99	43	22	6 1/2, 7, 8 1/2, 7 1/2, 8	220.33
100	43	22	6 1/2, 7, 8 1/2, 7 1/2, 8	222.46

## SPECIAL FENCE

No. 9 top and bottom. Balance No. 11.  
 10' height 8' bottom apart.

15-bar, 25-in. x 1/2"	\$9.44
20-bar, 60-inch	2.34
3-ft. Gate	2.34
12-ft. Gate	4.78
13-ft. Gate	4.81
14-ft. Gate	4.84
Set tools	2.80
25 lbs. Beaco Wire	1.00
25 lbs. Staples	2.00

FREIGHT PAID ON ORDERS  
 OF \$10.00 OR OVER

New Ontario Prices on Request. C. & G. S. CANADA

PAGE FENCE sells at the LOWEST PRICE for which HIGH GRADE FENCE can be sold. It represents the biggest actual dollar-for-dollar value to be had in fence. When you buy through the dealer—you DO one of two things. Either you GIVE MORE—or GET LESS.

*If you must make money for some one — MAKE IT FOR YOURSELF! Mail your next fence order to the nearest PAGE BRANCH. Remit in cash, check, money or express order, or bank draft. Get immediate shipment of LIFETIME Fence. Freight PAID on \$10 and over.*

(500)

**PAGE WIRE FENCE CO., LTD.**

Department No. 62  
1137 King St., West, TORONTO.  
87 Church St., WALKERVILLE.

## PAGE FENCES WEAR BEST