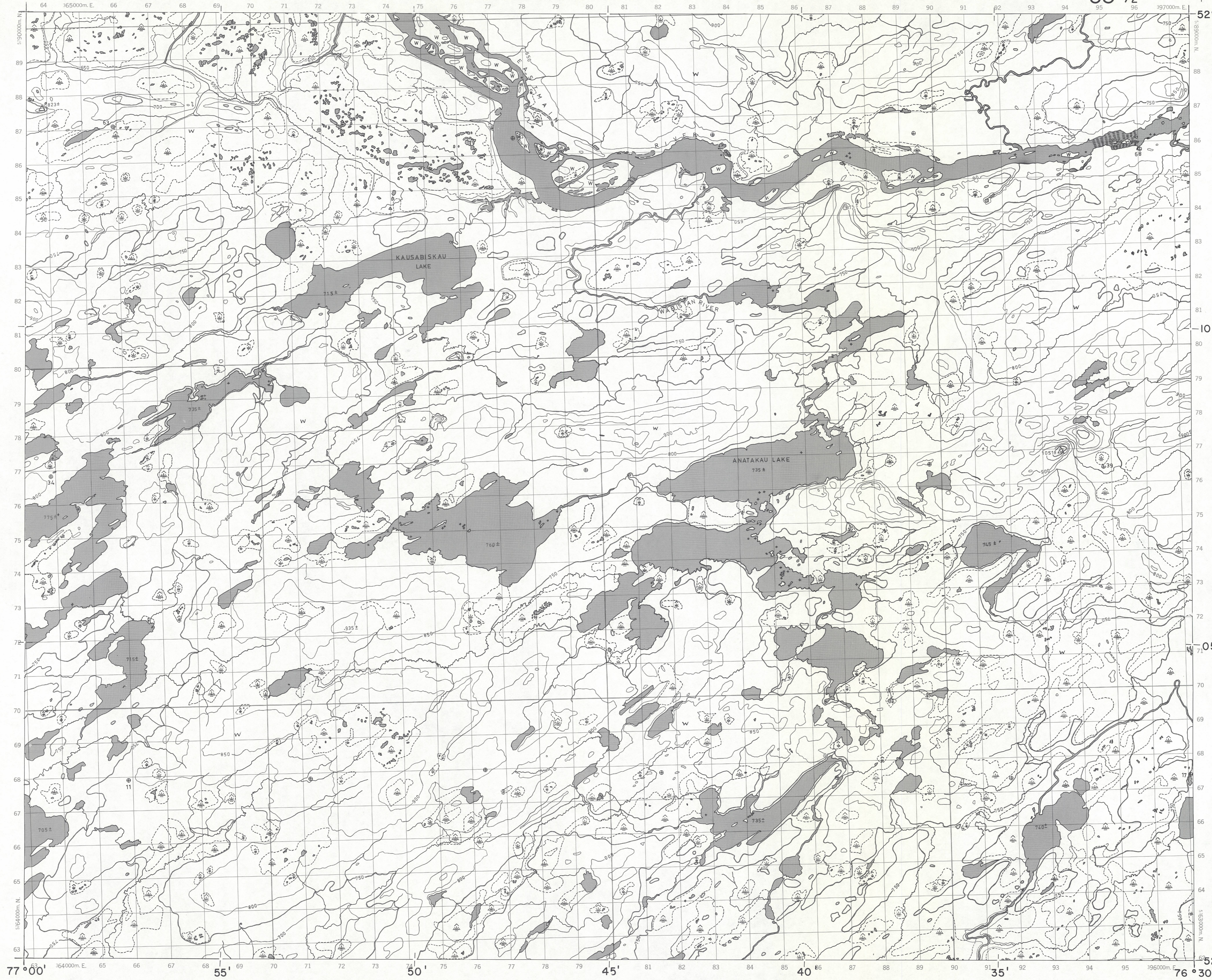


ADVANCE PRINT
ÉPREUVE PRÉLIMINAIRE

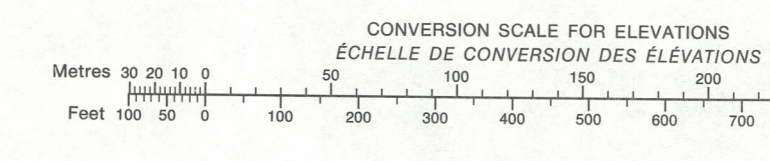
33 1/2

Military users, refer to this map as: Références de la carte pour usage militaire
SERIES A701 SERIE MAP 33 C/2 CARTE ÉDITION 1 MCE ÉDITION



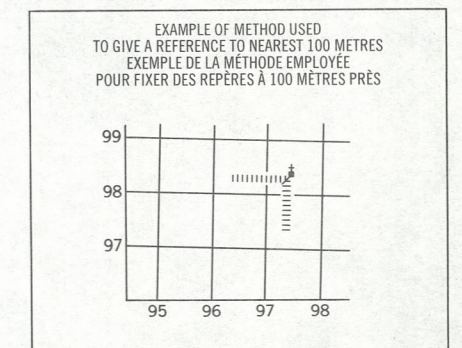
LEGEND - LÉGENDE

ROADS AND RELATED FEATURES	ROUTES ET OUVRAGES CONNEXES
HARD SURFACE, ALL WEATHER	SURFACE DURE, TOUTES SAISONS
LOOSE SURFACE	GRAVIER
CART TRACK, WINTER ROAD	CHEMIN DE TERRE, D'HIVER
TRAIL, CUTLINE, PORTAGE	SENTIER, PERCÉE, PORTAGE
BUILT UP AREA	AGGLOMÉRATION
RAILWAY, SIDING, STATION, STOP	CHEMIN DE FER, VOIE D'ÉVÈTEMENT, GARE, ARRÊT
BRIDGE	PONT
SEAPLANE BASE, ANCHORAGE	HYDROAÉROPORT, MOULAGE
LANDMARK FEATURES	POINTS DE REPÈRE
HOUSE, BARN	MAISON, GRANGE
CHURCH, SCHOOL	ÉGLISE, ÉCOLE
POST OFFICE	BUREAU DE POSTE
HISTORICAL SITE	LIEU HISTORIQUE
TOWERS: FIRE, RADIO	TOURS: FEU, RADIO
WELL: OIL, GAS	PUITS: PÉTROLE, GAZ
TANK: OIL, GASOLINE, WATER	RÉSÉRVUAIR: PÉTROLE, ESSENCE, EAU
TELEPHONE LINE	LIGNE TÉLÉPHONIQUE
POWER TRANSMISSION LINE	LIGNE DE TRANSPORT D'ÉNERGIE
MINE	MINE
CUTTING, EMBANKMENT	TRANCHÉE, REMBLAI
GRAVEL PIT	FOSSÉ DE GRAVIER
BOUNDARIES AND CONTROL	FRONTIÈRES ET POINTS DE RÉFÉRENCES
INTERNATIONAL, PROVINCIAL	INTERNATIONALE, PROVINCE
BOUNDARY MONUMENT	BORNE FRONTIÈRE
COUNTY, DISTRICT	COMTÉ, DISTRICT
TOWNSHIP, PARISH, UNSURVEYED	TOWNSHIP, PAROISSE, NON ARPENTÉ
SECTION LINE	LIGNE DE SECTION
MUNICIPALITY	MUNICIPALITÉ
INDIAN RESERVE, PARK, ETC.	RÉSERVE INDIENNE, PARC, ETC.
HORIZONTAL CONTROL POINT	REPÈRE PLANIMÉTRIQUE
BENCH MARK	REPÈRE DE NIVELLEMENT
SPOT ELEVATION, ELEVATION APPROXIMATE	POINT COTÉ, ÉLEVATION APPROXIMATIVE
DRAINAGE AND RELATED FEATURES	DRAINAGE ET OUVRAGES CONNEXES
STREAM, SHORELINE, INDEFINITE	COURS D'EAU, RIVE, IMPRÉCISE
DIRECTION OF FLOW	DIRECTION DU COURANT
LAKE, INTERMITTENT	LAC, INTERMITTENT
INUNDATED, FLOODED LAND	TERRAIN INONDÉ
MARSH OR SWAMP (WOODED)	MARAIS OU MARECAGE (BOISÉ)
DRY RIVER BED WITH CHANNELS	LIT DE COURS D'EAU TARI AVEC CHENAUX
SAND, ABOVE, IN WATER	SABLE, AU DESSUS, DANS L'EAU
STRING BOG	MARECAGES EN ENFILADE
TUNDRA-PONDS, POLYGONS	TOUNDRA, ÉTANGS, SOLS POLYGONAUX
RAPIDS	RAPIDES
FORESHORE FLATS	ESTRANS
ROCK	ROCHES
DAM	BARRAGE
WHARF	QUAI
DITCH	FOSSÉ
RELIEF FEATURES	RELIEF
CONTOURS	COURBE DE NIVEAU
APPROXIMATE CONTOUR	COURBE DE NIVEAU APPROXIMATIVE
DEPRESSION	COURBE DE CUVETTE
ESKER	ESKER
PINGO	PINGO
SAND, SAND DUNES	SABLE, DUNES
PALSA BOG	PALSE
WOODED AREA	RÉGION BOISÉE



GRID ZONE DESIGNATION OCCUPATION DE LA ZONE DU QUADRILLAGE	18 U
100,000 M SQUARE IDENTIFICATION CARRÉ DE 100,000 M	UN

This 1972 MAGNETIC BEARING is 1974 (288 min)
WEST OF GRID NORTH
Le REPÈRE MAGNÉTIQUE en 1972 est à 1974 (288 min)
OUEST DU NORD QUADRILLAGE
GRID NORTH is 1°30' (28 min) WEST OF TRUE NORTH
for center of map
NORD DU QUADRILLAGE est 1°30' (28 min) à l'ouest du
NORD GÉOGRAPHIQUE au centre de la carte



33 1/2	33 1/7	33 1/8
33 1/3	33 1/2	33 1/1
32 1/4	32 1/5	32 1/6

REFERENCE POINT
POINT DE RÉFÉRENCE

EASTING: Read number on grid line immediately to left of point
LONGITUDE: EST. Note the centre of the figure or quadrant immediately to the right of the point
Estimate tenths of a space from this line towards the point
Easting is number of digits to the right of the figure or quadrant immediately to the right of the point

NORTHING: Read number on grid line immediately below point
LATITUDE: Note the centre of the figure or quadrant immediately to the left of the point
Estimate tenths of a space from this line towards the point
Northing is number of digits to the left of the figure or quadrant immediately to the left of the point

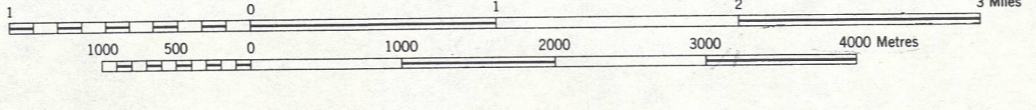
GRID REFERENCE SAMPLE
ÉCHANTILLON DU QUADRILLAGE

Read number and estimate 100,000 metres above 01 and 100,000 metres below 01

PRODUCED BY SURVEYS AND MAPPING BRANCH,
DEPARTMENT OF ENERGY, MINES AND RESOURCES,
OTTAWA, 1971, FROM PHOTOGRAPHS TAKEN IN 1956.
CONTOUR INTERVAL 50 FEET

ANATAKAU LAKE
QUEBEC

SCALE 1:50,000 ÉCHELLE
1.25 inches to 1 mile approximately



ÉTABLI PAR LA DIRECTION DES LEVÉS ET DE LA
CARTOGRAPHIE - MINISTÈRE DE L'ÉNERGIE, DES
MINES ET DES RESSOURCES EN 1971, D'APRÈS DES
PHOTOGRAPHIES PRISES EN 1956.
EQUIDISTANCE DES COURBES 50 PIEDS

ONE THOUSAND METRE
UNIVERSAL TRANSVERSE MERCATOR GRID
ZONE 18
QUADRILLAGE DE MILLE MÈTRES
UNIVERSAL TRANSVERSE DE MERCATOR

33 1/2
ÉDITION 1