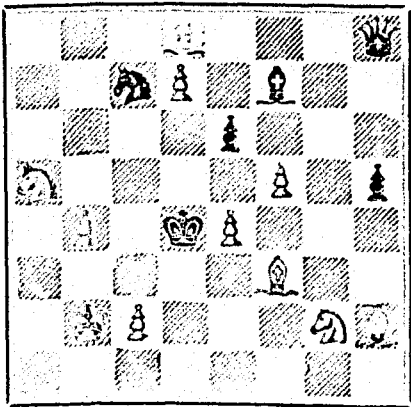


One of the members of the Toronto Chess Club sends us the following: "March 17th. "We are now playing Hamilton a (telegraphic) consultation match, five boards. Play commenced last Thursday, and will be resumed on Wednesday evening, only one game having been finished, which resulted in favour of the Hamiltonians."

PROBLEM No. 217. By J. G. Slater. BLACK.



WHITE White to play and mate in three moves.

GAME 348TH.

CHESS IN ENGLAND.

The following very pretty and very interesting game was lately played at Simpson's Divan, London, between Mr. Mason, of New York, and one of the most brilliant London amateurs.

- WHITE - (Mr. M.) 1. P to K 4 2. P to K B 4 3. B to B 4 4. K to B sq 5. K to Q B 3 6. P to Q 4 7. K to B 4 8. P to K B 4 9. K to K sq 10. K to K sq 11. K to Q 3 12. P to K Kt 3 (e) 13. K to f 2 14. K to K B 4 15. B takes B 16. P to K B 3 17. P to K Kt 4 18. B to K Kt 5 19. P to Q Kt 5 20. B to Q 3 21. K takes P 22. P to B 4 23. B to Q 2 24. B to K sq 25. P takes B 26. B takes Kt 27. B to K 3 28. P to Kt 6 (e) 29. B to B 2 30. B takes R 31. B to Q 4 32. B to K sq 33. B to K 5 (ch) 34. P to B 4 35. Q takes B (g) 36. Q to K 3 37. Q to B 3 38. K to B sq 39. Q to K 7 (ch) 40. Q to K 5 (ch) 41. Q to Q 6 42. K to B 2 43. B takes P 44. B to B 5 45. K takes P 46. Q to K 6 47. P to K 4 48. P to Kt 5 49. P to Kt 6 50. Q to Q 7 (ch) 51. Q takes Kt (k) 52. P to Kt 7 53. K to B 2 54. R to B 8 (ch) 55. P to Kt 8 (qas) 56. K to Kt 2 57. K to Kt sq 58. K to R 2 59. R to Kt 7 (ch) 60. Q to Q 7 (ch) 61. R to B 8 (ch) 62. Q takes Q (ch) BLACK - (Mr. B.) 1. P to K 4 2. P takes P 3. Q to R 5 (ch) 4. P to Q 3 (a) 5. Kt to K 2 6. P to K Kt 4 7. Q to R 4 8. P to K B 3 (b) 9. P to Kt 5 10. B to K 3 11. P to B 6 12. B to Q 2 13. Q Kt to B 3 14. B takes Kt 15. Castles (Q R) 16. K R to B sq 17. P to K B 4 18. Q R to K sq 19. Kt to R 4 20. P takes P 21. Kt to Kt sq 22. P to K R 3 23. P to Kt 3 24. P to Kt 3 (d) 25. Q takes P 26. Q takes P (ch) 27. B takes B 28. Q to Kt 7 (ch) 29. B takes Kt (f) 30. Q takes P (ch) 31. K to Kt 4 32. R to K sq 33. R to K sq 34. R to Kt 2 35. Q takes R (ch) 36. Q takes P 37. P to R 3 38. P to R 3 39. K to K 2 40. K to K 2 41. Q to B 7 (ch) 42. K to B 3 43. P to B 3 44. P to B 5 45. P to B 6 46. P to B sq 47. P to Kt 4 (a) 48. Kt to Q 4 49. Q to Kt 5 50. K to B sq 51. P takes Q 52. Q to Kt 6 (ch) 53. P to Q 5 54. K to K 2 55. Q to K 6 (ch) 56. Q to K 7 (ch) 57. Q to B 8 (ch) 58. Q takes B 59. K to B 2 (d) 60. K to B 3 61. Q takes R

And wins.

NOTES.

- (a) This defence has lately been popularized by Mr. Wood, who considers it superior to the classic defence, P to K Kt 4, inasmuch as it enables Black to frustrate the French attack, the first move of which is P to K Kt 3. (b) A pleasing deviation from the hitherto path, leaving the K R 5 sq to be occupied by k b. (c) This seems to give a safer game than the move recommended by some authorities - Kt to B 4. (d) Well played. (e) This game abounds with fine and vigorous strokes on both sides. (f) The Report of Chess almost reveals his identity by this move. (g) White is evidently not to be dazzled by brilliancy, nor intimidated by hard blows. (h) Of course, capturing the Kt would have entailed the immediate loss of the game. (i) Weak. (j) This sacrifice exposed the K to much worry, but we believe it was as sound as it was pretty. (k) A fatal blunder, but not to be wondered at, seeing that this admirably contested game, extending beyond sixty moves, was rattled off in about twenty minutes. - London Sporting and Dramatic News.

SOLUTIONS

Solution of Problem No. 216.

- WHITE. 1. B to B 5 2. R to Kt 4 (ch) 3. Kt to B 3 mate BLACK. 1. R takes B (a) 2. Kt takes R. (a) 1. B to Kt 3 2. K moves

Solution of Problem for Young Players No. 214.

- WHITE. 1. K to Kt 2 2. R takes R 3. R mates BLACK. 1. R to K sq 2. Any move.

PROBLEMS FOR YOUNG PLAYERS, No. 215.

- WHITE. K at K sq Q at K 8 R at K 2 Kt at K B 4 Kt at Q 4 BLACK. K at K 5 Pawns at K 4 and K 6 White to play and mate in three moves.



NOTICE TO CONTRACTORS.

SEALED TENDERS, addressed to the undersigned will be received at this office until SATURDAY, THE 19TH APRIL NEXT, inclusively, for the construction and fitting up of a heating apparatus at the Departmental Buildings, in course of construction, at Quebec.

The plans and specification of the work may be seen at this office, every day after the 26th instant, between the hours of 10 a.m. and 4 p.m.

The Tenders must be endorsed, "Tender for a Heating Apparatus."

The Department will not be bound to accept the lowest or any of the Tenders.

(By order)

ERNEST GAGNON, Secretary.

Department of Agriculture and Public Works, Quebec, 14th March, 1879.

N.B. - No reproduction unless by special written order.

25 Fashionable Visiting Cards - no two alike, with name, 10c. Nassau Card Co., Nassau, N.Y. \$77 a Month and expenses guaranteed to Agents. Outfit free. SHAW & CO., AUGUSTA, MAINE.

60 CHROMO, MOTTO, GILT-EDGE & LILLY CARDS, with name, 10c. Globe Print. Co., Northford, Ct.

60 Chromo and Perfumed Cards (no 3 alike). Name in Gold and Jet, 10 cents. CLINTS BROS., Clintonville, Ct.



THOMAS CREAN, MILITARY TAILOR.

Master Tailor to the Queen's Own Rifles. Late Master Tailor in H. M. 16th Regiment. Uniforms and accoutrements strictly in accordance with the "Dress Regulations for the Army," and of the best workmanship and quality. The New Regulation Helmet in stock. Price Lists sent on application. 435 YONGE STREET, Toronto.

THE COOK'S FRIEND BAKING POWDER

Has become a HOUSEHOLD WORD in the land, and is HOUSEHOLD NECESSITY

in every family where Economy and Health are studied. It is used for raising all kinds of Bread, Rolls, Pancakes, Griddle Cakes, &c., &c., and a small quantity used in Pie Crust, Puddings, or other Pastry, will save half the usual shortening, and make the food more digestible



SAVE TIME, IT SAVES TEMPER, IT SAVES MONEY.

For sale by storekeepers throughout the Dominion, and wholesale by the manufacturer.

W. D. McLAREN, UNION MILLS, 17-19-52 362 55 College Street.

IMPORTANT NOTICE.

THE BURLAND-DESBARATS LITHOGRAPHIC CO. 5 & 7 BLEURY ST.,

Begs to inform the BANKERS, MERCHANTS and BUSINESS MEN of the Dominion, that their large establishment is now in full operation, and that they are prepared to do all kinds of ENGRAVING

ELECTROTYPING, STEREOTYPING, LITHOGRAPHING and TYPE PRINTING.

Photo-Electrotyping & Wood Engraving

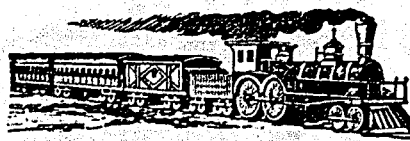
IN THE BEST STYLE, AND AT LOW PRICES.

Special attention given to the reproduction by

Photo-Lithography

OF MAPS, PLANS, PICTURES OR BOOKS OF ANY KIND.

From the facilities at their command, and the completeness of their establishment, the Company feel confident of giving satisfaction to all who entrust them with their orders. G. B. BURLAND, Manager.



Q.M.O. & O. RAILWAY.

NOTICE

Is hereby given that the Government of Quebec will apply during the present session of the Dominion Parliament, to have vested in it all the rights and powers held by the Montreal, Ottawa & Western Railway Company with respect to bridging the Ottawa River, at or near the City of Ottawa, and for power to obtain and hold in the Province of Ontario the lands necessary for purposes in connection with the Provincial Railway system of the Province of Quebec. Quebec, February 13, 1879.

The Scientific Canadian

MECHANICS' MAGAZINE,

PATENT OFFICE RECORD,

A MONTHLY JOURNAL.

Devoted to the advancement and diffusion of Practical Science, and the Education of Mechanics.

THE ONLY SCIENTIFIC AND MECHANICAL PAPER PUBLISHED IN THE DOMINION.

PUBLISHED BY

THE BURLAND-DESBARATS LITH. CO.

OFFICES OF PUBLICATION:

5 and 7 Bleury Street, Montreal.

G. B. BURLAND, General Manager.

F. N. BOXER, ARCHITECT & CIVIL ENGINEER, Editor.

TERMS:

One copy, one year, including postage, \$2.00. One copy, six months, including postage, 1.10. Subscriptions to be paid in ADVANCE.

The following are our advertising rates: - For one monthly insertion, 10 cts. per line; for three months, 9 cts. per line; for six months, 8 cts. per line; for one year, 7 cts. per line; one page of illustration, including one column description, \$30; half-page of illustration, including half column description, \$20; quarter-page of illustration, including quarter column description, \$10. 10 per cent. off on cash payments.

INVENTIONS AND MACHINERY, &c., or other matter of an original, useful, and instructive character, and suitable for subject matter in the columns of the MAGAZINE, and not as an advertisement, will be illustrated at very reduced rates. REMITTING MONEY. - All remittances of money should be in the form of postal-orders. When these are not available, send money by registered letters, checks or drafts, payable to our order. We can only undertake to become responsible for money when sent in either of the above ways.

This journal is the only Scientific and Mechanical Monthly published in Canada, and its value as an advertising medium for all matters connected with our Manufactories, Foundries, and Machine Shops, and particularly to inventors, is therefore apparent.

JUST PUBLISHED

CHISHOLM'S ALL-ROUND ROUTE AND PANORAMIC GUIDE OF THE ST. LAWRENCE.

With corrections to date. It contains full descriptions of the points of interest on the "All Round Route," including Hudson River, Trenton and Niagara Falls, Toronto, Ottawa, Montreal, Quebec, Saguenay River, White Mountains, Portland, Boston, New York. It is profusely illustrated, and is furnished with maps of the Route, and a fine panoramic view of the St. Lawrence River. For sale by booksellers and news agents. Sent post-paid to any address on receipt of the price, 50 cts.

C. R. CHISHOLM & BROS., 26-52-373 179 Bonaventure street, Montreal

British American

BANK NOTE COMPANY, MONTREAL.

Incorporated by Letters Patent. Capital \$100,000.

General Engravers & Printers

Bank Notes, Bonds, Postage, Bill & Law Stamps, Revenue Stamps, Bills of Exchange, DRAFTS, DEPOSIT RECEIPTS, Promissory Notes, &c., &c., Executed in the Best Style of Steel Plate Engraving.

Portraits a Specialty. G. B. BURLAND, President & Manager.

25 FANCY CARDS with Name 10c. Plain or Gold, Agents' Outfit 10c. 150 Styles. Hull & Co., Hudson, N. Y.

FOR INFANTS AND INVALIDS! AND FOR THE FAMILY TABLE!

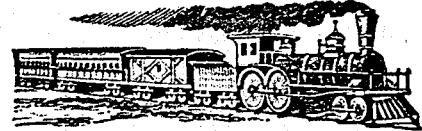
There is no alimentary Starch that is so rich in the properties peculiar to such preparation as is the

Durham Corn Flour!

HOUSEKEEPERS will find it the most economical and delicious article for des-erts. Professed Cooks have contributed a few original and choice recipes for preparing, which are given on every package.

INSIST ON RECEIVING THE DURHAM.

ALL RESPECTABLE GROCERS KEEP IT.



Q. M. O. & O. RAILWAY. Eastern Division.

COMMENCING TUESDAY, FEBRUARY 11th.

Trains will be run on this Division as follows: - Leave Hochelaga. Arrive in Quebec.

EXPRESS..... 3.09 p.m..... 10.10 p.m.

MIXED..... 7.18 a.m..... 5.50 p.m.

RETURNING.

Leave Quebec. Arrive in Montreal.

EXPRESS..... 12.45 p.m..... 7.30 p.m.

MIXED..... 6.15 p.m..... 10.10 a.m.

Trains leave Mile-End Station ten minutes later.

Tickets for sale at offices of Starnes, Leve & Alden, Agents, 202 St. James Street, and 158 Notre Dame Street, and at Hochelaga and Mile-End Stations.

J. T. PRINCE,

Gen'l Pass. Agent.

Feby. 7th, 1879.

50 Perfumed Chromo and Lace Cards, name in gold, in fancy case, 10c. Davils & Co., Northford, Ct.



DEPARTMENT OF CROWN LANDS.

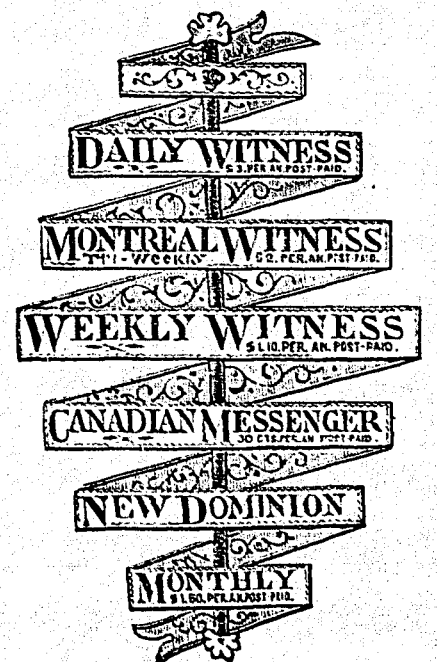
QUEBEC, 13th January, 1879.

NOTICE IS HEREBY GIVEN that His Excellency the Lieutenant-Governor has been pleased by Order in Council, dated the 26th January inst., to add the following clause to the Timber Regulations:

All persons are hereby strictly forbidden, unless they may have previously obtained a special authorization to that effect from the Commissioner of Crown Lands or from his Agents, to settle, squat, clear or chop on Lots in Unsurveyed Territory, or on Surveyed Lands not yet open for sale, or to cut down any merchantable trees which may be found thereon, comprised within the limits of this Province, and forming portions of the locations granted in virtue of licenses for the cutting of timber thereon; said timber being the exclusive property of the holders of said licenses, who have the exclusive right to enter actions against any person or persons who may be found violating this order.

F. LANGELIER, Commissioner of C. L.

CHEAPEST AND BEST.



JOHN DOUGALL & SON,

218 and 220, St. James Street, Montreal. Electrotyping and Job Printing, Chromatic and plain.