

Miners Wanted
 TO CHEW
PAY ROLL
 Plug Tobacco

WANTED.

At the several collieries of the Dominion coal co. Limited, skilled coal miners and mine laborers.

Apply on the works Or by letter

Dominion Coal Company, Ltd

Genuine Garlock Packings

FOR ALL PURPOSES.

Pipe and Boiler Coverings,
 ENGINEERS SUPPLIES.

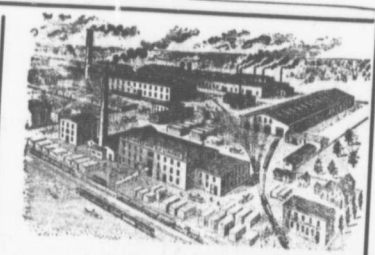
also

"Tauril" High Pressure Jointing
 the Best Sheet Packing yet
 Produced.

THE GARLOCK PACKING CO.
 HAMILTON, ONTARIO.

Used by Collieries in Lancashire, Staffordshire & Yorkshire

'XTERRA' COLLIERY LAMP OIL.
 For Muzzle, Muzzle Deflector or Closed Lamp
 PURE WHITE FLAME LOW PRICE
E. WOLASTON, Dutton St MANCHESTER
 Sole Representatives for Canada, **AUSTEN BROS.,**
 Halifax, N. S.



MANUFACTURERS OF—
RAILWAY STREET and MINING CARS,
 Church Pews, Fittings for Stores, Schools, & A SPECIALTY.
 Large Stocks of Foreign and Domestic Lumber on Sale.
Rhodes, BUILDING MATERIALS GENERAL
Curry & Co., Ltd.
 Branch ROBBIE STREET, HALIFAX, N. S. AMHERST, N. S.

INTERCOLONIAL RAILWAY

On and after MONDAY, April 10 1907 trains run daily, Sunday excepted, as follows:—

—TRAINS LEAVE STELLARTON—

No 144 Mixed for Hopewell	5.55
No 79 Mixed for Trenton	6.30
78 Mixed for Hopewell	6.30
19 Express for Halifax and St. John	6.55
21 Mixed for Pictou Landing	7.40
62 Mixed for Pictou	7.40
65 Mixed for Mulgrave	7.45
19 Express for Sydny	8.30
28 Mixed for Pictou	11.10
66 Mixed for Truro	11.15
129 Mixed for New Glasgow	11.15
30 Express for Halifax and Montreal	12.40
140 Mixed for Pictou	12.45
103 Mixed for Pictou Landing	12.50
83 Express for the Sydney	12.50
83 Express for Hoewell	17.05
65 Mixed for New Glasgow	18.10
65 Express for Halifax and St. John	19.40
17 Express for New Glasgow	19.40
66 Express for Pictou	21.35
66 Express for Pictou	21.40

—TRAINS ARRIVE AT STELLARTON—

79 Mixed from Hopewell	6.30
78 Mixed from Trenton	6.55
61 Express from Pictou	7.35
19 Express from New Glasgow	7.35
21 Mixed from Hopewell	7.35
65 Mixed from Truro	7.35
100 Mixed from Pictou Landing	8.20
28 Mixed from New Glasgow	8.20
37 Mixed from Pictou	10.25
67 Mixed from Mulgrave	10.55
19 Express from Halifax and St. John	11.35
129 Mixed from Pictou	11.35
30 Express from Sydney	12.30
83 Express from Halifax and St. John	12.30
22 Mixed from Pictou Landing	17.00
77 Mixed from Hopewell	18.10
65 Mixed from Pictou	18.45
65 Express from the Sydney	19.35
66 Express from New Glasgow	19.40
17 Express from St. John and Halifax	21.35
66 Express from Pictou	21.40

Alterations are run by at six Standard time twenty four
 O'clock is mid-night. Monday, 2. B. April 8th. 1907
 Parlor Cars between Halifax and Sydney. Dining Car
 on No. 83 train between Halifax and Mulgrave, on No. 20
 train between Mulgrave and South River, on No. 19 train
 between South River and Mulgrave. On 20 train between
 Mulgrave and Halifax.