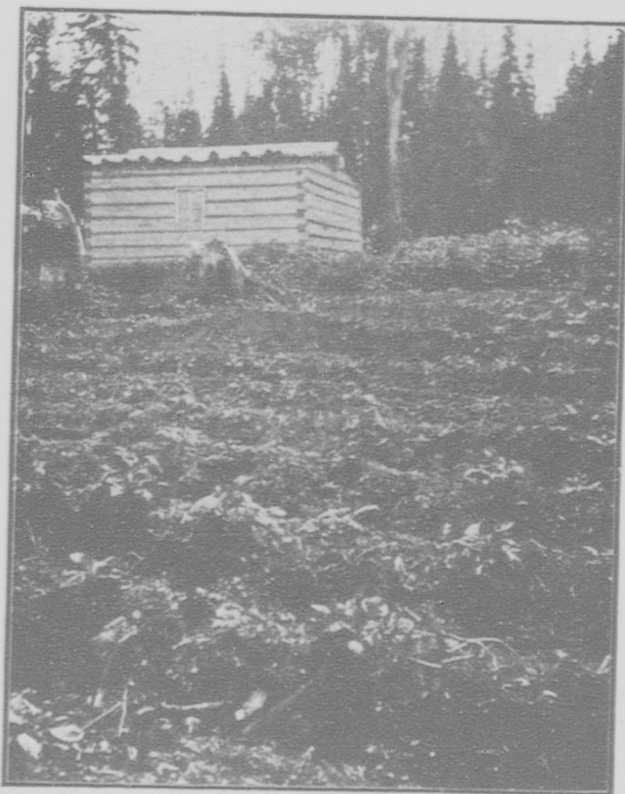


fertilizers, been made to yield excellent potatoes, cabbages, turnips, beets, peas, beans and other vegetables, and some small fruits. However, the 75 miles of country we passed through between Metagama and Fort Metagamii is extremely rocky, and not at all suited for farming, though of great value to the lumbermen, for its heavy

large Balm of Gileads. Inland trips from our water course, lasting from one to three days, occupied our time for the next six weeks, one of which trips I shall briefly describe. We would start out at sunrise, after a hearty breakfast of "homemade bread" and pork and beans, Mr. Davis, with the compass, leading the



AN INDIAN GARDEN NEAR NIGHTHAWK LAKE,

growth of black and white spruce, poplar and white pine.

Tisdale township, the scene of our first operations, was reached two days later, after a beautiful paddle down the Metagamii and Kenogamisse rivers, the banks of which in this region are heavily wooded with

party. Then followed Mr. Kay, noting anything of geological interest, then myself recording as many notes as possible on the soil, making physical analyses where practicable, and collecting samples; also observing the flora and fauna of the district. Bringing up the rear, came the two pack-