

Make a close study of your Market

and marketing conditions. It may mean dollars to you to study these types in relation to market quotations.

Brief description is given of the three outstanding types of beef cattle, steers—feeders and stockers—as shipped to market and the detail that attends the receipt and sale of your stock at the yards.

When a car of cattle arrives at one of the central markets, the number of the car and the name of the party or firm you are shipping to is noted. The cattle are unloaded, weighed and distributed to the pens of the commission firm you have shipped to. They are then ready for the salesman. After sale, they are weighed to the buyer. The proceeds of

the sale, less the actual charges are then remitted to the shipper. These charges are:

Unloading—\$1 per car.

Yardage, or use of pens—25c per bullock.

Commission for selling—\$13 per car.

Insurance—10c per car.

Freight—If freight was prepaid there is no deduction.

The ordinary stock car will easily hold 16 choice steers, or 20 feeders or 25 stockers.



CHOICE STEER—Weighs not less than 1200 lbs. well covered with good, firm flesh and of beef type.



GOOD STEER—May be of fair conformation but lacking in either quality or finish. A great many steers fall into this class owing to the fact that while of good weight and finish they are inclined to be coarse.



COMMON STEER—Is likely to be of light weight, rough and coarse and not capable of taking on the high smooth finish of steers of good quality.



MEDIUM FEEDER—Of fair beef type, average quality and thrift. Usually lighter weight than the higher class feeders.



COMMON FEEDER—Lacking markedly in quality, conformation and flesh. The word common always means lacking in quality in speaking of beef cattle.



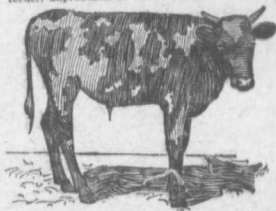
INFERIOR FEEDER—Rough, angular, devoid of natural flesh. Possesses the conformation of a dairy rather than a beef animal. Slow feeder, unprofitable in the feed lot.



GOOD STOCKER—Weighs from 450-500 lbs., of beef type, good quality, in fair flesh but not fat. A stocker steer is intended to be carried over for a considerable length of time and therefore stockers are not found in a finished condition.



MEDIUM STOCKER—Weighs from 450-500 lbs., of fair conformation and quality but lacking in condition or quality in comparison with good stockers.



COMMON STOCKER—Weighs from 450-500 lbs., of poor conformation and quality, also being sadly lacking in condition. Stockers bred from the dairy breeds usually furnish this class.

These pictures are used entirely as types and do not reflect merit or demerit upon any breed. Each of the recognized beef breeds in Ontario, when properly finished, produce choice steers. There are many sub-divisions of these classes but the above are the outstanding types of market cattle.

For further information on any point in connection with feeding and marketing of cattle write to:

ONTARIO DEPARTMENT OF AGRICULTURE

PARLIAMENT BUILDINGS
TORONTO

Sir Wm. H. Hearst,
Minister of Agriculture

Dr. G. C. Creelman,
Commissioner of Agriculture



ONTARIO