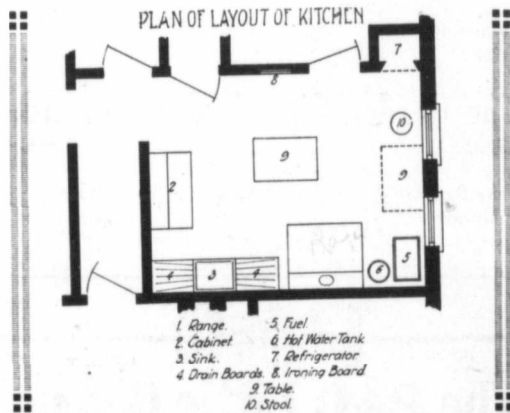


which commands a splendid view of the surrounding country, and which is very useful for airing bedding, and during house-cleaning time.

Figure shows the lay-out of the kitchen. Note the built-in ironing board, a very convenient arrangement. The dinner wagon may stand here also, or be left in the little back hall between the kitchen and dining-room. The table may be in the centre of the kitchen or by the window, according to what it is being used for. There is also a ventilated cleaning cupboard in the corner of the wash-room behind the door.

The basement is conveniently arranged. It is intended that the laundry work will be done in the basement. A large concrete cistern is planned for, underneath the concrete cellar floor, thus occupying no cellar space.

The perspective of plan "E" is



## Stability in Hog Prices

When asked to increase his output of hogs, it is only natural that the farmer should inquire what is being done to protect him from loss. The result of any action to increase hog production which may be taken at the present time will not be apparent on the market until about twelve months have elapsed, and the farmer fears that something may happen within those twelve months which will influence the price of hogs and possibly wipe out his profit. It is only fair, therefore, that a clear statement should be made as to what has been done and what is under way to protect the interests of the farmer.

Our Food Controller has made an announcement that the profits of packing houses will, in future, be limited and that such action will be taken that the farmer who produces the hogs shall receive as his share a fair proportion of the proceeds derived from the sale of the hogs. This action on the part

shown in Figure. The roof line looks a little "high." This was done in order to get a good attic room. Should this not be required, the roof may be given a flatter pitch, which will add to the appearance of the house.

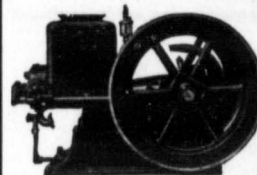
The working drawings, specifications, and bill of material, which can be had for the same nominal fee as was given in connection with the other prize plans (viz., \$3.00 if ordered by residents of Manitoba, and \$5.00 if sent out of the province), will not be ready for distribution until the middle of January, 1918.

It is anticipated that a bulletin presenting all the plans in the series so far shown, together with a few others, will shortly be printed and offered for free distribution through the Publications Branch, Manitoba Department of Agriculture, Winnipeg.

## Complete Crushing Outfit \$244.50

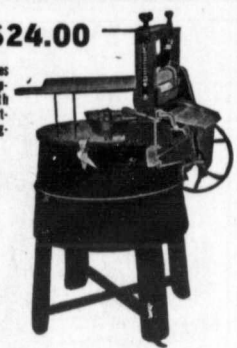
Consisting of 7 H.P. Engine with magneto, \$206.00  
8 H.P. Cyclone Grinder, - - - \$39.50  
Drive Belt, - - - - - FREE

9 H.P. Engine with magneto \$260.00



\$24.00

All Engines are equipped with self-starting magneto.



## Reversible Wringer

PURE RUBBER ROLLS  
EASY CONTROL

EASY RUNNING.  
GUARANTEED  
TO START IN ANY  
WEATHER

Get our advice before purchasing. We will save you money

## Cyclone Crusher

7-in. \$35.00  
8-in. \$39.50  
10-in. \$45.50  
12-in. \$56.50  
Extra plates furnished with each grinder



POLE SAW FRAMES..... \$27.50  
CORD SAW FRAMES..... \$21.50  
SAW BLADES (DISSTON)  
24-in. ... \$6.00 28-in. ... \$8.70  
26-in. ... \$7.50 30-in. ... \$10.00

WRITE FOR CIRCULAR

## Canadian Stover Gasoline Engine Co.

Limited  
BRANDON, - MANITOBA

# RAW FURS

OUR ADVICE  
Ship to us at once and Reap Benefits of High Prices now prevailing  
PRICE LIST AND SHIPPING TAGS FREE

## Pierce Fur Co., Ltd.

Richard M. Pierce, Manager  
King and Alexander, WINNIPEG, Canada  
We Also Buy HIDES and SENECA ROOT

## DROP A POSTCARD FOR



A.E. MCKENZIE CO. LTD.  
BRANDON, MAN. CALGARY, ALTA.

## THIS GRINDING OUTFIT WILL COST YOU NOTHING



Just try a Gilson Grinding Outfit on our new free trial plan, and you will wonder how you ever got along without it. Your farm is not complete without this outfit. You will be surprised how quickly a Gilson outfit on your farm will pay for itself.  
The simple, powerful Gilson Engine - dominant in quality and service, is made in Canada, and distributed direct by the manufacturer. 25% to 50% surplus power over rating. Made in all sizes for all purposes.  
Write us TO-DAY for particulars of this "Help the Allies" Grinding Outfit and special proposition.

GILSON MFG. CO. LTD.  
Dept. E  
WINNIPEG, MAN.