

# JOHN DEERE IMPLEMENTS

## Engine Gangs



### Plows That Suit All Conditions

The price of success depends upon the application of proper methods. Conditions vary. Different methods must be applied to different conditions. The plow that is adaptable for one section of the country may not be the type of plow best suited for another section.

No one type of plow bottom is suitable for all conditions. The Breaker Bottom is adaptable for its own class of work, but how often do you see a farmer plowing stubble with a Breaker Bottom?

Regardless of the condition of the soil that you are tilling, there is a **JOHN DEERE PLOW BOTTOM** built just for your requirements.

Breaker Bottoms, Stubble, Turf and Stubble, Rod and Slat Bottoms, just whatever you require, can be furnished with John Deere Engine Plows.

### Distinctive John Deere Features

**BEAMS AND BOTTOMS IN PAIRS.** Only half the number of gauge wheels and levers as are used on single bottom plows. Bottoms run steady and do not wing.

**QUICK DETACHABLE SHARES.** Greatest invention every made on a plow. Saves eighty per cent of time required to change the old style shares.

**SCREW CLEVIS** located at the point of each beam. Depth of plowing can be regulated while the plow is in operation. No time is lost in stopping to make adjustments.

**GREAT CLEARANCE.** High arched beams. Rolling Colter between the beams (not directly underneath close up to the gauge wheel) eliminate all possibility of clogging.

**GET OUR CATALOGUE** explaining all about engine plowing. Every up-to-date farmer should have one. It is free.

4-6-8-10-12-14 Bottoms

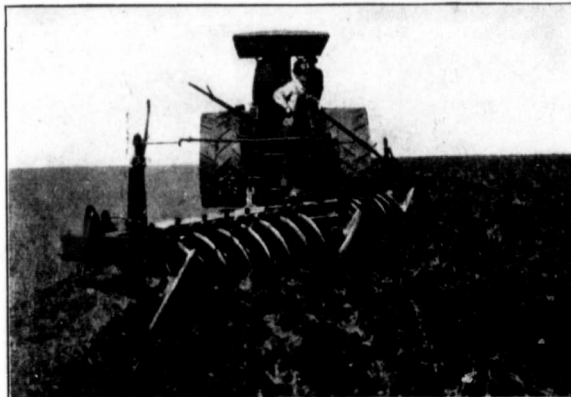
### Engine Disc Plows

The Disc plow is particularly adapted for use in hard, sticky, waxy or gumbo soil.

The disc leaves the furrow bottom concave and porous, therefore, receptive of moisture.

**SOLID FRAME.** The John Deere Engine Disc has a solid frame, put together with hot rivets, not bolts. Built to stand all possible strain.

**It is a Real Disc Plow For Real Hard Plowing**



### Engine Disc Plows

**EASILY HANDLED AND DOES GOOD WORK.**—This is a big plow, yet it is easy to operate. Front furrow wheel is completely controlled by the engine and, in turn, controls the rear wheel, thus allowing perfect freedom in turning either to the right or to the left.

Disc can be set at such an angle as to insure penetration. Scrapers keep the discs free of dirt and aid in turning and pulverizing the ground.

**The Kind of Plow You Want Write for information**

GET QUALITY AND SERVICE—JOHN DEERE DEALERS GIVE BOTH

**JOHN DEERE PLOW COMPANY, LIMITED**  
WINNIPEG REGINA CALGARY SASKATOON EDMONTON LETHBRIDGE