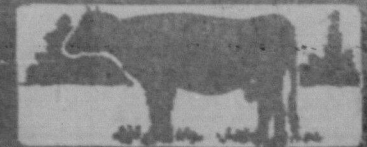




The Farm Page



There are NO BETTER VALUES offered anywhere at any time, than the values we are giving daily in our stores for MEN and YOUNG MEN. We have just finished enlarging and re-modelling our store. Our floor space has been greatly increased, giving us much more room to display our merchandise.

We have CLOTHES for every type of Man, whether Work Clothes or the finest Dress Clothes. We have them and at prices that mean a

A Saving of DOLLARS to You

All Our SUITS Specially Priced
From \$25.00 to \$60.00

include all the NEWEST MODELS in TWEEDS, WORSTEDS, CHEVIOTS and SERGES. Pay us a call and see for yourself.

Our Furnishing and Shoe Dept. are always up to date.

Here are TWO SHOE VALUES that should be of interest to you:

Men's Brown Calf Dress Shoe.
Balkan last.
Special \$7.50

\$7.50

Men's Black Calfskin Shoe, re-
ceding toe. A real
dressy Shoe. \$7.50

ACME CLOTHIERS, Ltd.

Men's Outfitters

Two Stores:

STORE No. 1—

10146 101st St.

Phone 4833

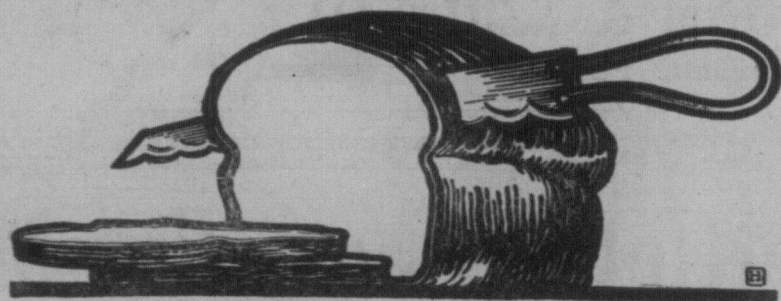
A FULL STOCK OF
LECKIE SHOES
CARRIED BY US

THE HOME OF UNION MADE GOODS

STORE No. 2—

Cor. Peace and
101st St.

Phone 1977



About Bread

A great philosopher asked on pain of death to name "the most perfect thing in the universe" replied, "That is simple. A loaf of bread."

Who will question his decision?

Think of a complete ration of food, capable all alone of supporting life and keeping the body fine and vigorous.

Good Bread is the one perfect food, perfect tonic and perfect delicacy the year round.

Good Bread is the one food good for all people of all ages. The one food that makes all foods better.

People who eat plenty of bread don't have to be running always to doctors for anaemia or indigestion. Bread alone keeps them well-nourished and healthy.

A pound-and-a-half loaf of bread will do the work of six pounds of sirloin steak and do it better.

Eat more Bread. Twice the amount you are now eating—and notice immediately the raise in your general health and vitality.

Edmonton baked Bread is Bread at its Best—always pure, tempting and nutritious.



Edmonton Master Bakers' Assn.

FARM WORKERS ASK 50s WEEK MINIMUM WAGE IN ENGLAND

London—A national minimum wage of 50 shillings a week has been demanded by the Workers' Union and the Agricultural Laborers' union, for farm workers. At a special conference of representatives of 15,000 workers, the minister of agriculture was called upon to require the resignation of the present members of the Wage Board appointed to adjust wages for the farm workers, and to appoint men who will act. A strike is threatened if action on the men's demands is delayed.

WORK OF U.F.A. LAW DEPARTMENT GROWING RAPIDLY

Necessary to Revise Arrangements
In Regard to Work Done
By Department

The work of the U.F.A. Law department has grown to such an extent that it has been found necessary to revise the arrangements in regard to work done by the department for our locals and members as follows:

1. Commencing immediately, it will be necessary that all enquiries, whether forwarded direct by members or through secretaries of locals, must be accompanied by a fee of \$1.00 to cover the cost of the correspondence involved.

2. All enquiries must be addressed to the secretary, United Farmers of Alberta, Loughheed Building, Calgary. Any enquiries made direct to the law department will be sent to the secretary before being dealt with. This applies to interviews as well as to letters. Applicant must state local to which he belongs.

3. For the \$1.00 fee the law department will write one letter of advice on the facts of the case as presented.

4. All subsequent services will be entirely at the cost of the local or person making such enquiry.

Note: It is urged that wherever feasible the member's problem be laid before the local before being referred to the law department, and especially that all facts be stated in the first letter, simply and without argument.—H. Higginbotham.

BREAD A SYMBOL OF CIVILIZATION

Man's Oldest Food Has An Amazing History—As a Diet During the Stone Age

Bread, aptly termed the "staff of life," is also a barometer for civilization. People are just beginning to appreciate the extreme importance of bread as a food, but only very few are aware of its significance in marking the development of the human race.

History shows repeatedly that the humble loaf of bread, which is taken into the home in the most matter-of-fact manner, has been the handmaid of civilization through ages.

Wherever civilization laid its hand bread has been with it. In the lands where civilization made marked progress through the various centuries, bread has been consumed in large quantities.

Bread-making is the most ancient of human arts. It marked man's first efforts to obtain a diet of prepared foods—a step which signaled his departure from the lower animal stage of eating—far back in the Stone Age.

Cake-like remains of coarsely ground grain cakes have been found in Swiss lake dwellings that date back to the Stone Age. The cakes, which would shock the housewife of today, were made of different kinds of grain, barley and one-grain wheat being among the ingredients.

There were no bakeries making bread for Mrs. Stonewife. She did not even have the opportunity of buying breadmaking material in meal form. To obtain her "daily bread" she was compelled to crush grains between some hard surface. Stones, round-shaped ones were used to mash the grain against other stones with more or less concave surfaces.

Then came the bread-baking without ovens. This was accomplished by laying the dough in a convex-shaped stone, which was heated, and covering it with hot ashes.

It is almost certain that white bread made its initial appearance in Egypt, being a food that only the very wealthy were able to obtain. Loaves of bread in those days were small and round, resembling to some extent the shape of the present-day muffins.

Persons are awakening to the importance of bread as a food, which was so forcibly emphasized during the war when wheat and wheat flour had to be conserved to feed the world. Since the war more bread is being consumed by the people of this continent than ever before. Bread is the food for muscle and brain. Scientists have ascertained that it is the most wholesome, nutritious, and economical of all foods. Its exponents now say, "Eat more bread."

Prices of shoes are said to be due for a drop. Everybody is hopefully listening.

EXPERIMENTS SHOW FLAX NOT HARD ON LAND

Chemical Analysis Show Flax Is Not More Exhaustive of Soil Fertility

"Is flax hard on the land?" This idea seems to be prevalent in general among the farmers. At different experimental stations it has been found that wheat frequently yields more after flax than after wheat or oats. Chemical analysis made of the soil also show that flax is no more exhaustive of soil fertility than other grain crops. The notion that flax is hard on the land has done much more harm than good and men who contemplate growing flax in the future should not let this idea misguide them.

Breaking of the same grass seed land of the future will no doubt continue to be the ideal home for flax, being firm full of fibre and free from weeds. This land should be prepared in much the same manner as for wheat, plowed early in June, peaked immediately, disced and floated to form a shallow seed bed. If the crop is sown on spring breaking (a precarious practice in dry areas) the land should be plowed about four inches deep during the last two weeks of May, peaked or planked and seeded immediately or as soon as possible.

Summerfallow is not usually sown to flax, especially if the land is inclined to drift or if early fall frosts are likely to occur. In some instances exceptional yields of flax are secured from fallowed land, but most men prefer to sow their summerfallow to wheat.

On old land flax usually does best as the second crop on fall or spring plowing. The latter is usually preferred except when the previous fall is wet. Best results from spring plowing are secured by plowing, pecking, harrowing, seeding and pecking (or using a press drill), one operation immediately following the other. This is not always possible but usually the sooner the seed is sown after plowing the better. Although flax is sometimes sown as a third crop or even a fourth crop on fall or spring plowing the yields are likely to be low.

On clean summerfallow stubble free from grass and weeds and in a good state of tillage flax often gives satisfactory returns but if these are present a poor crop may be expected.

In all preparations it should constantly be kept in mind that flax requires a firm even seed bed with the moisture near the surface. It is, therefore, always important to see that the soil is properly firmed. This many men fail in doing or let the land dry out before sowing the seed. Different soils require to be treated differently but these points should be kept in mind whatever the nature of the land.

Though flax can be cut and threshed with the ordinary farm machinery, these operations are generally considered a little more troublesome than with the other grain crops. The cutting and threshing are most easily done when the crop is thoroughly dry. If tough no attempt should be made to thresh flax as it will neither thresh well nor store safely. Often it is impossible to start threshing until late in the morning on account of the dew. This difficulty can sometimes be solved by threshing other grain until the flax can be threshed as readily as other grains.

Barnyard manure of good average quality contains approximately 10 pounds of nitrogen, 5 pounds phosphoric acid and 10 pounds potash per ton. Therefore 10 tons of barnyard manure would furnish about 100 pounds of nitrogen, 50 pounds phosphoric acid and 100 pounds potash.

CITY OF EDMONTON

Waterworks Department

Notice to Water Consumers

As authorized by the City Council, notice is hereby given that on and after Monday, April 26, 1920, the following charges for services rendered will be effective:

1. A charge of Fifty Cents will be made for the first installation, connecting up and turning on of water, and for each new consumers' account.
2. A fee of Twenty-five Cents will be charged for every removal or transfer on account, or for turning on water where service has been suspended at consumers' request.
3. A charge of Fifty Cents will be made for turning off or turning on water services at the property line for the purposes of effecting repairs or leaks on private portion of services. This charge to be paid at time work is performed.

Superintendent,
Waterworks Department.

By Authority of
City Commissioners.

BE ON HAND

Friday and Saturday

Cleaning up many lines end of month. The Big Sale Starts at 8:30 a.m.—ends Saturday night at 6 p.m.

Boots and Shoes

For the whole family, see prices and Shoes in window. Also on tables inside. High grade Footwear at low prices. Read some of the bargains—

Ladies' Chocolate Kid Balmoral. Size 2½ and 3 only. Cuban heel. To Clear at.	\$4.95	Misses' Gunmetal Bals. Sizes 12 and 2 only. Sale Price.	\$3.95
Ladies' Brown Calf Medium Heel Bals. Sizes 2½, 3, 3½, 6, 7½. Sale Price.	\$5.95	Misses' Gunmetal Bals. Sizes 11, 12, 13 and 2. Very Special.	\$2.45
Women's Black Gunmetal Bals. Round toe, low heel, white welt, different widths. All sizes.	\$6.95	Children's Kid High Cut Classic Boots. Goodyear welted. Reg. \$6.50. Sale Price.	\$4.95
Ladies' Two-tone Balmoral Boots, 9 inch top, welted.	\$13.45	Boys' Strong Scout Boots. Sizes 1 to 5. Sale Price.	\$4.95
Ladies' Brown Kid Oxford. All sizes. Cuban heel.	\$5.90	Boys' Fine Tan Balmoral. Sizes 1 to 5. Sale Price.	\$5.95
Ladies' Pumps in gunmetal and kid. Cuban heels. All sizes. At this Sale.	\$4.45	Men's Boots. New Spring goods. Regular \$10.00. Sale Price.	\$7.95
Ladies' Brown Kid Bal. 8 inch top. Louis heel, white welt. Sale Price.	\$7.90	Men's Boots. New Spring goods. Regular \$12.00 values. At this 3 Days' Sale.	\$9.45
Ladies' Light Grey Balmoral Kid Boots. Regular \$15.00. At Three Days' Sale.	\$13.35	Men's Boots. Real value at \$15.00. At this Sale.	\$10.35
Women's Patent Oxford, Louis heel; Slater make. Sizes 3½, 6½, 7, 7½ and 8. A Bargain.	\$6.95	Children's Tan Blue Boots. Sizes 8 to 10. Below cost.	\$1.85
		Children's Strong Standard Sewer Blucher Boots. Sizes 4 to 7. While they last.	\$1.65

You cannot afford to miss these bargains right at the time when everybody wants Boots. Come along forenoon if possible, best of attention given.

Hallatt-Rodgers, Ltd.

10039 Jasper Ave. (directly opp. Bank of Toronto). Phone 1246

Will You Need Workers for Seeding?

If so OFFICERS of the

EMPLOYMENT SERVICE OF CANADA

located at the following points are ready to serve you without charge.

LOCAL OFFICES:

Calgary, Edmonton, Red Deer, Drumheller, Medicine Hat, Lethbridge.

Fill in and detach Coupon below and place in an envelope addressed Employment Service of Canada, together with the address of the office nearest your farm. Be sure and state how many men are required. Your order will receive prompt attention.

I shall require the following help on my farm:

Experienced men..... Wages.....
Partly experienced..... Wages.....
Inexperienced..... Wages.....
Length of time help is required for.....
Date when required.....
NAME.....
Postoffice.....
Nearest Ry. Station.....

Public Announcement

We have at considerable expense, obtained the formulae of a well known Custard and Egg Powder. These will be shortly on sale under the name of

**DEL-I-CO CUSTARD
AND
EGG-O-LENE**

THE FINEST SUBSTITUTE FOR EGGS

Look for Special Announcement Next Week, and Boost Home Industry.

Rudder Manufacturing Coy.

EDMONTON
Manufacturers of the well-known Liquid Cedar Wax Polish