

SIMPSON

Store Opens 8 a.m.

Closes 5.30 p.m.

H. H. FUDGER, President

J. WOOD, Manager

Phone Number Main 7841

SIMPSON

Compelling Prices for Handsome Mantles

SUITS SET PRECEDENTS. A collection of Suits for women and young girls, made in the latest styles; smart and chic in every way.

COATS AT ONE-THIRD UNDER PRICE. Some of our best selling Coats, regularly sold at \$15, \$17.50, \$22.50, and \$25.

NEW, ATTRACTIVE WASH DRESSES. New York's latest styles, in pretty gingham and English prints, their waists trimmed with strappings and buttons.

SKIRTS AT \$1.98. A very special lot of Women's Separate Skirts, made to sell at \$3.75 to \$4.50.

REEFER COATS AT \$1.98. In serge, Panama, and worsteds; box back and double-breasted, trimmed with novelty buttons, notch collar, and tailored sleeves.

GIRLS' THREE-QUARTER-LENGTH COATS. Made of imported chevot serge in scarlet, and black and white shepherd's check worsted.

Showing of New Millinery

Never has our Department been filled with a better variety of Summer Hats than will be shown tomorrow.

MORNING SPECIAL AT \$5.00. 85 only Hats will be offered, including Women's and Young Women's Trimmed Hats, light lace trimmed styles.

CHILDREN'S DEPT. TO THE FORE. A great assortment of hand-made styles, in white mohair, with satin ribbon and small flower trimmings.

A Top-Notch Value in the Corset Section. The biggest and by far the best corset value of the season.

Eight Hundred Pairs 'Royale' Corsets, two elegant, stylish models; made in coutil or summer-weight batiste.

SMART RIBBONS. For a general utility hat you will get most wear from one that is ribbon trimmed.

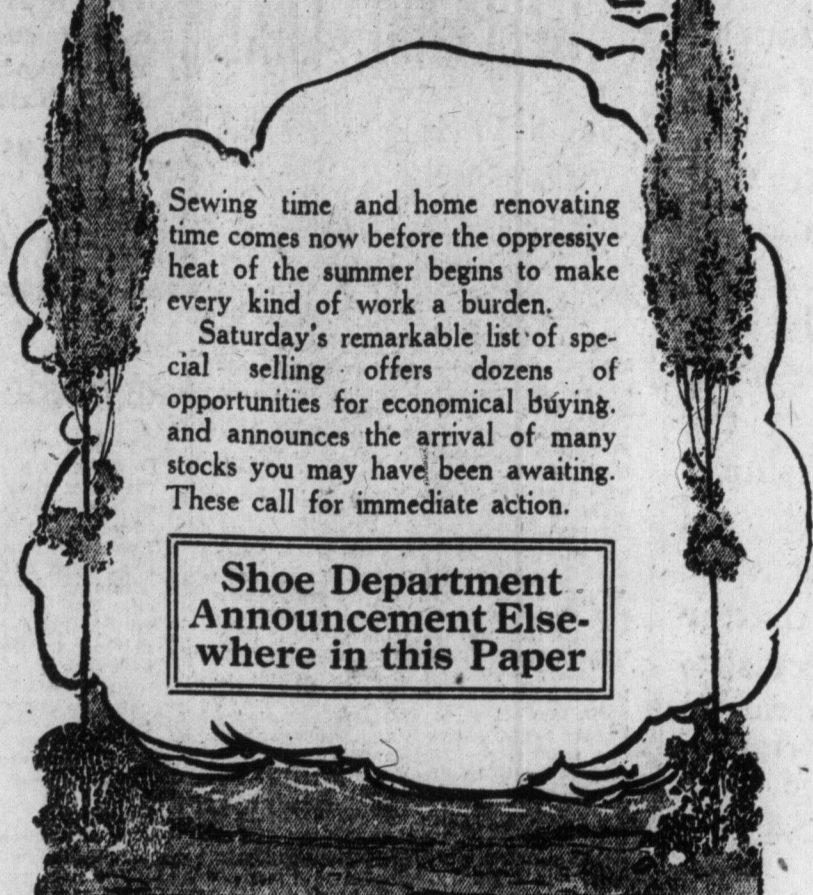
MUSIC. Sixth Floor. William Tell Overture, Beautiful Blue Danube Waltz, Value in E Flat by Durand, Irish Medley Overture.

Books and Stationery. Pocket Dictionaries in leather and cloth binding, thumb index, regular 15c to 50c each, special, Saturday, all half-price.

Umbrellas, \$2.89. The odds and ends of Women's Umbrellas from a large manufacturer, specially purchased for Saturday's selling.

Post Cards, over 250 city views, 5c to 6c each, Saturday, 2c for 5c.

Prepare For Summer Now!



Summer Hosiery Very Low in Price

Women's Real Silk Thread Hose, extra fine even finish, gauze weight, full fashioned, fine thread, deep lisle thread top.

1,000 pairs of Women's Second Quality Lisle and Cotton Hose, plain colors and black, defects are small and all mended.

Men's Best Qualities Sample Lisle and Cotton Half-Hose, plain colors, in a large assortment, various fancy patterns.

Dainty Wash Fabrics

60 only Splendid White Linen Party-made Robes, beautifully embroidered, with material for waist to match.

200 pieces of our splendid English Checked Gingham, black and white, pink and white, red and white, etc.

130 pieces of best English Print, 31 inches wide, all fine patterns, light and dark grounds, spots, and figures, and fast colors.

A lot of pretty white muslins, spots, figures, stripes, and checks; just broken lines.

26 pieces all linen, coarse weave, pure white, with embroidered spot, 27 inches wide, splendid for cool summer dresses.

Special Value in Matting, Squares, Carpets

HEAVY CHINA. 27 x 54, Regularly \$2.25, Saturday, \$1.19. 36 x 72, Regularly \$4.00, Saturday, \$2.25.

Extra Heavy Close Twisted China. 26 x 72, Regularly \$1.85, Saturday, \$1.25. 46 x 76, Regularly \$2.95, Saturday, \$2.10.

150 ODD ROLLS JAPANESE MATTINGS will be included in this Saturday Bargain Sale, all colors, beautifully blended; a rare choice.

REMNANTS. Up to eight yards. Yard, \$1.25. A special purchase of STENCILLED JAPANESE MATTING SQUARES.

BARGAINS IN HEARTH RUGS AND MATS. French Wilton Hearth Rugs, Regularly \$4.25, for \$2.95.

STERLING VALUE IN HEAVY SYRMA HEARTH RUGS and Mats, red, green, and tan Orientals, green chintz.

Kazak Rugs and Door Mats, at big reductions from regular prices.

27 x 54, Regular price \$4.95, Saturday, \$3.75. 34 x 13, Regular price \$1.35, Saturday, .99.

The Simpson Store For Men

Men's Suits Give Huge Values

200 Men's High-grade Suits will be on sale Saturday morning for the early rush. High-class English tweeds and worsteds, in browns, greys, in fancy striped pattern, and a number of black and blues, in plain patterns.

MEN'S WATERPROOF COATS. Made from fawn color English Burberette cloth, single-breasted motor style, with English Raglan shoulders.

MEN'S MOTOR DUSTERS. We have one of the most complete lines of Motor and Shop Dusters to be found anywhere in Canada.

Boys' Two-Piece Bloomer Suits. In Norfolk and double-breasted styles, made from grey and rich brown, fancy stripe English tweeds.

BOY'S SPRING OVERCOAT. Chesterfield style, with well-shaped lapels and close-fitting collar, made from grey herringbone English tweed.

BOY'S TWEED SUIT. Grey and fawn fancy weave, cut in three-button, double-breasted style, with long soft roll lapels, side vents, and breast pocket.

Shirts Galore \$2.50 to \$4.00

1,000 Men's Shirts, of many styles and designs, including soft negligees, with separate collar and double soft cuffs; coat or ordinary styles, plain or pleated bosom.

Genuine French Balbriggan at 50c a Garment. Manchu's Genuine French Balbriggan Shirts and Drawers, made from the finest Sea Island cotton.

50c and 75c Neckties to 25c. 5,000 Men's Neckties—These are odd lines from our regular stock, good spring and summer designs; nothing wrong with these whatever; newest shapes and styles in plain or knitted silk.

Hats Saturday \$1.00

700 Men's Derby or Stiff Hats, finest grades of fur felt, British, French, and Italian manufacture, positively the latest 1912 spring styles.

Men's Summer Soft Hats, in greys, browns, tans, and greens, best English make. Saturday special, \$1.50.

Men's Golf or Hookdown Caps, with medium or large peak, in fine navy or black worsteds and unfinished serges; also large range of tweeds, in checks, stripes, plaids, and fancy patterns.

Children's Hats, in turban, sailor, middie, and Jack Tar shapes, of fine quality light-weight imported felt, in all the principal colors.

Special Prices on Sporting Goods

Fresh clean stock, Lawn Tennis Racquets, extra-quality, strong frames, assorted weights. Prices: 75c, \$1.25, \$2.50 to \$6.75.

Another Hammock Special. Saturday we will put on sale 350 Three-Dollar and twenty-five-cent Hammocks, beautiful rich effects, full roomy sizes, foot and head spreaders and good close weave.

50 FEET GARDEN HOSE, \$3.79. 10,000 feet 'Planet' Garden Hose, a full 3-ply hose; 1/2-inch size fitted complete with combination brass nozzle all complete for use.

GARDEN TOOLS SALE. Daily Lawn Mowers, Special, 12-inch size, \$2.75. 14-inch size, \$3.25. 16-inch size, \$3.75.

New Baby Folders and Carriages. Steel and Leatherette Baby Folders, rubber tires and hoods. Each, \$4.50.

Need Body Carriages with hoods. Each, \$15.00, \$16.50, \$20.50, \$23.00, \$25.00, \$52.00.

Picked Groceries. 2,000 lbs. Fresh Creamery Butter, White Clover brand, per lb. 33c. Toasted Cornflakes, 3 lbs. 25c.

Rich Red Salmon, half-pound flats, 2 tins 25c. Imported Pickles, Mixed, Gillard's, Reg. 15c. 2 bottles 25c.

Breakfast Ready at 8 o'Clock Prompt service for busy people Prices 15c to 50c

The Robert SIMPSON Company Limited. The odds and ends of Women's Umbrellas from a large manufacturer, specially purchased for Saturday's selling.

The Robert SIMPSON Company Limited. The odds and ends of Women's Umbrellas from a large manufacturer, specially purchased for Saturday's selling.

\$4,500-Block three Ontario land rentals \$45 per acre.

PROBS

About the

In view of the state the bank and we trust, concerns the public, the stock market, the shareholders, etc.

In a bank of five million dollars of its own, the shareholders, etc.

Next, the capital, the reserve is in actuality, the excessive profits, etc.

Next, as to the issue above the known as an asset of the crops are.

Now, third, a primary in the struggle is for people's money, to use in forward.

Big mergers, a fact, from this lot we can suit any features or your particular tastes.

Men's Summer Soft Hats, in greys, browns, tans, and greens, best English make.

Men's Golf or Hookdown Caps, with medium or large peak, in fine navy or black worsteds and unfinished serges.

And in the bank, let it be any group that half millions of fifty millions in.

The one check great safety deposit would pay moral of the situation.

How to get in more deposits from two big questions.

But big merger for the big trust little fish can those of them elsewhere.

BIG DAY. This should day for men of the Dineen Company.