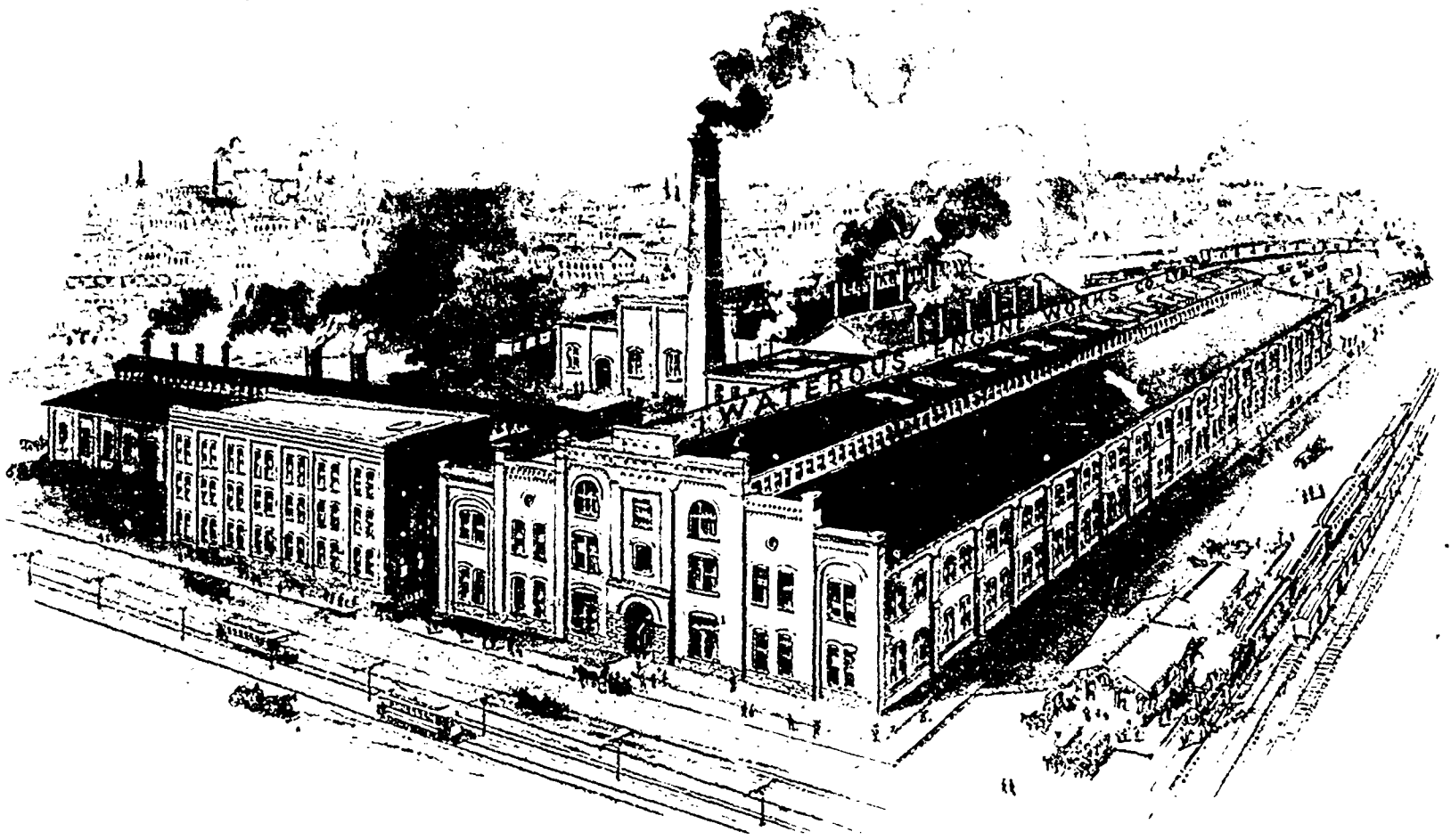


1844

1898

IF YOU BELONG TO THE MINORITY WHO DO NOT KNOW US,  
WE SHOULD LIKE TO BECOME ACQUAINTED WITH YOU.



#### Saw Mills—

Band, Circular and Portable Mills.

#### Re-Saws—

Circular and Band.

#### Steam Acting Machinery—

Kickers, Log Rollers, Niggers, Jump Saws, Steam Feed and Drag Saws.

#### Shingle Machinery—

Hand and Power Feed.

#### Wood-Working Machinery—

Full Assortment.

#### Pulp Machinery—

Cutting-Off Barkers, Grinders, Screens, Wet Machines, Chip-pers, &c.

#### Brick Machinery—

Plastic, Stiff Mud and Dry Press.

#### Engines—

Plain, Automatic and Marine.

#### Boilers—

Plain and Water Tube, Clyde, Economic, Marine, Burners, &c.

For over 50 years we have been building a reputation for High Class Machinery. Our Mills and Machinery extend, in Canada, from the Pacific to the Atlantic—Newfoundland, Central and South America, New Zealand, Australia, Austria, Roumania, and the far East. Our aim is ever to produce the Best, not the Cheapest, with the invariable result that where we receive one order others follow quickly. Our new works, occupied in 1896, give us the much-needed room for expansion, coupled with the most modern facilities for economic production and prompt shipments. If you belong to the minority who do not know us, let us become acquainted.

**WATEROUS ENGINE WORKS CO., LIMITED**  
BRANTFORD, CANADA