

## NEW STRAWBERRIES SELL VERY READILY

Seven Carloads Reached Toronto Yesterday and Demand Was Good.

## MORE TOMATOES COME

Large Quantities Were on Sale and in Afternoon Price Dropped.

Strawberries were abundant yesterday, seven cars coming in, but the Friday demand was so good that the prices kept firm at 15c to 18c per box.

Asparagus was not plentiful, the price being firm at \$1.50 per 11-quart basket, some extra well filled baskets bringing as high as \$1.75.

Hot-house tomatoes were shipped in in very large quantities, the price declining, for, the same sales went thru early in the day at 14c and 15c per lb., the general run of prices was 10c to 12c per lb.

Egyptian onions, which have proved a drug on the market, are now being offered at below cost, at 12c per case.

H. Peters had two cars of strawberries, selling at 15c to 18c per box; a car of Naval oranges, selling at \$2.25 per box; a car of cabbage, at \$1.75 to \$2 per case; a car of mixed vegetables, potatoes at \$2 per hamper, tomatoes at \$2.75 per case, and cucumbers at \$1.50 to \$1.75 per case; also Egyptian onions at \$2.50 per 112-lb. sack.

Dawson Elliott had a car of Cuban pineapples, selling at \$2.25 to \$2.50 per case; a large shipment of hot-house tomatoes, cucumbers, selling at 50c per bag, and a car of cabbage at \$2 per case.

Maner Webb had a large shipment of choice asparagus from W. F. Wiley, Niagara; also some from Cooper of Niagara. Chas. S. Simpson had a car of strawberries, selling at 15c to 18c per box.

R. Fowler & Co. had hot-house tomatoes from Fraser & Ross, Leamington, selling at 12 1/2c to 15c per box.

McWilliams & Evered had two cars of strawberries, selling at 15c to 18c per box; a car of mixed vegetables—beans at \$2.25 per hamper, cucumbers at \$1.75 to \$2 per hamper, carrots at \$1.25 to \$1.50 per hamper; also a car of Porto Rico pineapples at \$2.75 to \$3.00 per case.

White & Co. had a car of bush-hammer potatoes from Louisiana, selling at \$2 per hamper; a car of strawberries, selling at 17c and 18c per box; a car of Cuban pineapples, selling at \$2.50 to \$2.75 per case.

J. J. Ryan had a car of Delaware potatoes, selling at 60c per bag.

Stronach & Sons had a car of cabbage, selling at \$2.25 per case; a car of Navels, selling at \$3 to \$3.25 per case.

McBride had a car of strawberries, selling at 17c per box.

Clemens Bros. had a car of strawberries, selling at 15c to 18c per box.

Apples—Canadian: \$3.50 to \$3.75 per bbl.; American, \$3 per bbl.

Limes—\$1.75 per hundred.

Oranges—Late Valencia and Mediterranean sweets, \$2.25 to \$2.50 per case; Navel, \$2 to \$2.25 per case.

Peaches—\$3.50 per box.

Rhubarb—\$1.50 per 112-lb. sack; \$2.75 to \$3.00 per case.

Rhubarb—Outside grown, 15c to 20c per dozen bunches.

Strawberries—15c to 18c per box.

Asparagus—\$1.50 per 11-quart basket; few at \$1.75 to \$2.

Beans—White: \$1.75 to \$2.25 per bushel; hand-picked, \$2.50 per bushel; Lima, \$1.50 per lb.

Beans—Wax and green, \$2.25 to \$2.50 per bushel.

Beets—New, 75c per dozen bunches, 15c per hamper; Old, 50c per dozen bunches.

Cabbage—New, \$1.75 to \$2 per case; Cabbage—Old, \$1.50 per case; New, \$1.25 to \$1.50 per case.

Celery—Florida, \$2.25 to \$2.50 per case; Celery—Canadian, \$1.50 per case; Celery—Ohio, \$1.75 to \$2 per case.

Onions—American, \$2.50 per 100-lb. sack; Bermuda, \$1.50 per case; Texas Bermuda, \$1.75 to \$2 per case; Egyptian, \$2.50 per 112-lb. sack.

Lettuce—Leaf, 20c to 30c per dozen; head lettuce, 40c per dozen; Boston, 75c per dozen.

Mushrooms—\$1.50 per six-quart basket.

Peas—Green, \$2.50 to \$2.75 per hamper.

Peppers—Green, sweet, 50c per hamper; Parsley—American, 75c per dozen bunches, 50c to 60c per 11-quart basket (Canadian).

Paranips—50c per bag.

Potatoes—New, \$1.25 to \$1.50 per bbl.; Potatoes—New Brunswick, 60c per bag; Onions, 50c per bag.

Radishes—Canadian, 15c per dozen bunches (a drug on the market); Spinaise, 15c to 20c per dozen bunches; Tomatoes—Florida, \$2.25 to \$2.50 per case; house, 10c to 14c per lb.

Fruit—Old, 80c per lb.

Wholesale Fish.

Massed trout, per lb., 10c and 11c.

Fresh whitefish, per lb., 8c.

Fresh codfish, per lb., 8c.

Fresh haddock, per lb., 8c.

Fresh flounder, per lb., 7c.

Fresh sole, 12c to 15c per lb.

Weighting 6 to 7 lb. each.

Fresh bluefish, per lb., 15c.

Fresh halibut, per lb., 14c to 11c.

Fresh finnan haddock, 15c.

Fresh finnan haddock (fillets), per lb., 10c.

Fresh kipper, 30c, 15c.

Fresh mackerel, each, 18c.

Live lobsters, each, 18c.

ST. LAWRENCE MARKET.

There were nineteen loads of hay brought in yesterday, selling at \$18 to \$20 per ton.

Grain.

Wheat, fall, bushel, \$1.40 to \$1.45.

Good wheat, bushel, 1.35.

Buckwheat, bushel, 1.30.

Barley, bushel, 0.75.

Peas, bushel, 1.25.

Oats, bushel, 0.64 to 0.65.

Rye, bushel, 1.15.

Hay and straw.

Hay, per ton, \$18.00 to \$20.00.

Hay, mixed, per ton, 15.00 to 17.00.

Straw, rye, per ton, 12.00 to 13.00.

Straw, loose, per ton, 8.00 to 10.00.

Straw, oat, bundled, per ton, 15.00 to 16.00.

Vegetables.

Potatoes, per bushel, \$0.40 to \$0.50.

Potatoes, per bag, 0.20 to 0.25.

Dairy Produce.

Eggs, new, per dozen, \$0.23 to \$0.25.

Butter, farmers', dairy, per lb., 0.20 to 0.22.

Butter, going at, 0.22 to 0.25.

Poultry.

Spring chickens, lb., \$0.60 to \$0.65.

Chickens, dressed, lb., 0.22 to 0.25.

Fowl, dressed, lb., 0.18 to 0.21.

Live hens, lb., 0.14 to 0.20.

Farm Produce, Wholesale.

Hay, No. 2, car lots, \$15.00 to \$17.00.

Hay, car lots, \$14.00 to \$16.00.

Straw, car lots, \$7.00 to \$8.00.

Potatoes, car lots, \$0.37 1/2 to \$0.40.

Wares.

Butter, creamery, lb., 0.23 to 0.25.

Butter, creamery, sold, 0.23 to 0.25.

Butter, dairy, 0.22 to 0.27.

Eggs, per dozen, 0.23 to 0.25.

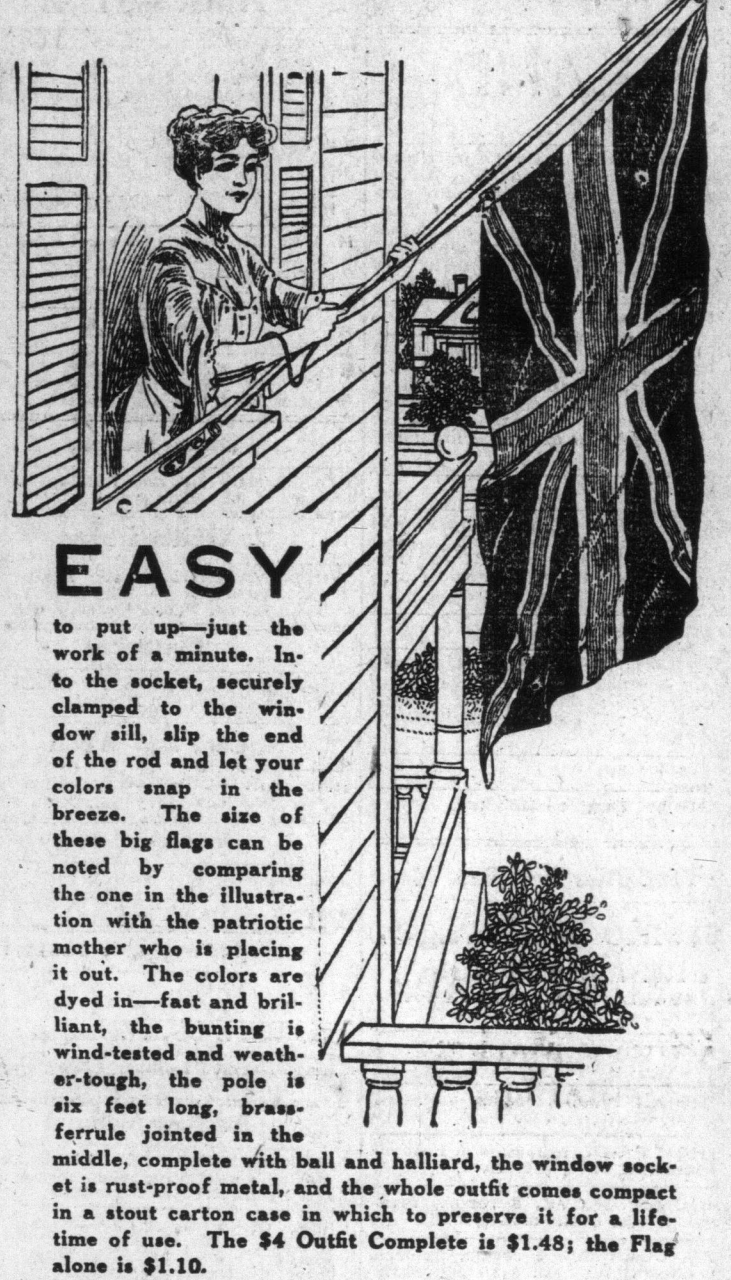
Cheese, new, large, lb., 0.20 to 0.22.

# YOUR FLAG

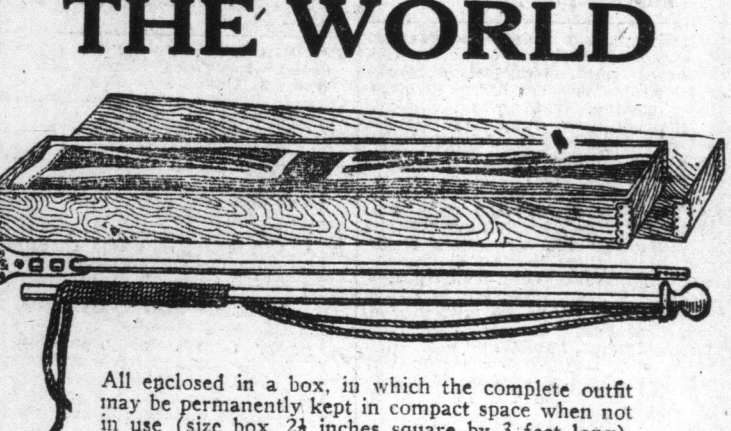
## HAVE YOU SECURED IT?

Show your patriotism and loyalty. Every day is flag day until our victorious armies have won the last battle and the Union Jack floats triumphantly over the fallen foe.

Till then let YOUR Union Jack float in the breeze as a token of YOUR love for home, king and country.



## PRESENTED BY THE WORLD



All enclosed in a box, in which the complete outfit may be permanently kept in compact space when not in use (size box, 24 inches square by 3 feet long).

## JUST CLIP THE COUPON

and present at The World Office, 40 West Richmond Street, Toronto, and 15 East Main Street, Hamilton.

Cheese, twin, 0.21	Wool, unwashed, coarse, 0.20
Cheese, 0.22	Wool, unwashed, fine, 0.22
Beef, forequarters, cwt., \$10.50 to \$11.50	Wool, washed, coarse, 0.25
Beef, hindquarters, cwt., 13.50 to 14.00	Wool, washed, fine, 0.25
Beef, choice sides, cwt., 13.00 to 14.00	Rejections and Cuttings, 0.23
Beef, medium, cwt., 11.50 to 13.00	
Beef, common, cwt., 9.00 to 10.00	
Light mutton, cwt., 12.00 to 14.00	
Heavy mutton, cwt., 7.00 to 9.00	
Lamb, spring, each, 0.30 to 0.40	
Lamb, yearling, per lb., 0.17 to 0.19	
Veal, No. 1, 12.00 to 14.00	
Veal, common, 8.50 to 10.00	
Straw, rye, per ton, 12.00 to 13.00	
Straw, loose, per ton, 8.00 to 10.00	
Straw, oat, bundled, per ton, 15.00 to 16.00	
Vegetables.	
Potatoes, per bushel, \$0.40 to \$0.50	
Potatoes, per bag, 0.20 to 0.25	
Dairy Produce.	
Eggs, new, per dozen, \$0.23 to \$0.25	
Butter, farmers', dairy, per lb., 0.20 to 0.22	
Butter, going at, 0.22 to 0.25	
Poultry.	
Spring chickens, lb., \$0.60 to \$0.65	
Chickens, dressed, lb., 0.22 to 0.25	
Fowl, dressed, lb., 0.18 to 0.21	
Live hens, lb., 0.14 to 0.20	
Farm Produce, Wholesale.	
Hay, No. 2, car lots, \$15.00 to \$17.00	
Hay, car lots, \$14.00 to \$16.00	
Straw, car lots, \$7.00 to \$8.00	
Potatoes, car lots, \$0.37 1/2 to \$0.40	
Wares.	
Butter, creamery, lb., 0.23 to 0.25	
Butter, creamery, sold, 0.23 to 0.25	
Butter, dairy, 0.22 to 0.27	
Eggs, per dozen, 0.23 to 0.25	
Cheese, new, large, lb., 0.20 to 0.22	

## Auction Sales

### SUCKLING & CO.

Our Regular Weekly Sale to the Trade by Auction at our Salesrooms, 76 Wellington St. W., Toronto, on

### WEDNESDAY, JUNE 9

1000 dozen Men's Balbriggan Undershirts, the closing of a large mill in lots to suit.

Ladies' White Lawn Waists, Silk Waists, Voile Waists, White Waists, Hosiery, Men's Clothing, Boys' Clothing, etc. Liberal terms.

### Suckling & Co.

We are instructed by

### RICHARD TEW

to offer for sale by public auction at our warerooms, 76 Wellington Street West, Toronto, on

### Wednesday, June 9th

at 2 o'clock p.m. the stock belonging to the insolvent estate of

### Rubenstein & Vondels

PERTH

consisting of:

General Drygoods, \$3,495.54

Women's Ready-to-wear, 2,230.57

Millinery, 1,200.97

Men's Furnishings, 1,446.46

Men's Ready-to-wear, 965.95

Hats and Caps, 693.37

Fancy Goods, 289.31

Carpets and Oilcloths, 1,147.39

Boots and Shoes, 299.31

Groceries, 1,089.00

Furniture and Fixtures, 2,422.09

Stable Outfit, 213.25

Total, \$22,584.21

Terms: Quarter cash, 10 per cent. at time of sale, balance at 2, 4 and 6 months, bearing interest and satisfactorily secured.

Stock and inventory may be inspected on the premises at Perth, and inventory at the office of Richard Tew, 32 Scott St., Toronto.

### Valuable Law Stationery Stock and Business For Sale by Tender

Tenders for the purchase of the assets of the late Messrs. G. H. and J. H. Limited, Law Stationers, 67 Adelaide St. W., Toronto, on, at a rate on the dollar of the inventory prices as prepared by the undersigned and open to inspection at above address (copies of which will be furnished) will be received by the undersigned until 12 o'clock noon Tuesday, the 9th of June, 1915.

Terms: A marked cheque for \$2000 must accompany each tender and the balance shall be paid in cash on or before the 1st of July, 1915, or if desired the purchaser may have two and four months for payment of the balance in equal instalments bearing six per cent. interest, and secured to the satisfaction of the undersigned.

Assets do not include book debts or negotiable paper, and the purchaser will be entitled to use firm name and logo, and will be assigned to the purchaser, and on or after any tender not necessarily accepted.

Toronto, 2nd of June, 1915.

GERALD NOBLE, Assignee, 67 Adelaide St. W., Toronto.

McWHINNEY & BROWN, Solicitors for Assignee.

### BRAZILIAN SHERIFF'S SALE

of about 200 shares of BRAZILIAN TRACTION, LIGHT & POWER CO., LTD., on TUESDAY, JUNE 8TH, 1915, at 12 o'clock noon, at the City Sheriff's Office, City Hall.

FRED MOWAT, Sheriff of Toronto.

### UNION STOCK YARDS.

Receipts of live stock at the Union Stock Yards on Friday were five cars, two cattle, 356 hogs and one sheep.

Rice & Whaley sold 12 decks of hogs at \$8.85 weighed.

D. A. McDonald sold for McDonald & Hagan six tons Tuesday: 1785 hogs at \$9.30 to \$10 per cwt., weighed off cars; 40 spring lambs, good to choice, at \$7 to \$8 each; common to fall, \$3 to \$5; 20 yearlings, \$7.50 to \$8.50 per cwt.; 30 sheep, heavy weights, \$6 to \$7; 40 calves, \$7 to \$10 per head.

McDonald & Hagan sold 35 cars of live stock Tuesday as follows: Best heavy cattle, \$8.25 to \$8.50; choice butchers, \$8.15 to \$8.35; good butchers, \$7.75 to \$8.00; medium butchers, \$7.50 to \$7.75; 37.65 choice butchers, \$7.25 to \$7.50; good butchers, \$6.75 to \$7; common to medium butchers, \$5.75 to \$6.50; canners and calves, \$4.25 to \$5; choice butchers, \$7.50 to \$7.75; good butchers, \$7.25 to \$7.50; medium to heavy, \$6.50 to \$7; choice springers and milkers, \$7.50 to \$8; choice medium springers, \$6 to \$7 each.

### NERLICH TO BE TRIED FOR TREASON NEXT WEEK

W. C. Mikle and R. H. Greer Will Prosecute—Attorney-General Refuses to Comment.

Attorney-General Lusk had no opinion to express yesterday on the quashing of the Nerlich conviction for treason. The treason charge, he said, would be gone on with next week, and W. C. Mikle, Belleville, and R. H. Greer, Toronto, will prosecute. In the event of the conviction for treason, a conspiracy having been sustained for treason appeal was to have been held over till the fall.

### DANISH SAILING SHIP IS SHELLED AND SUNK

Crew Saved After Drifting in Boat for Twelve Hours.

LERWICK, Scotland, June 4.—The Danish three-masted sailing ship Salvador, bound from Copenhagen to England with a cargo of timber, was shelled and sunk by a German submarine in the North Sea. The crew was picked up by the trawler Ferno and landed here today after drifting for 12 hours in an open boat.

## Legal Notice

### IN THE SUPREME COURT OF ONTARIO—JUDICIAL NOTICE TO Creditors, Contributors, Shareholders and Members of the Carleton Place Silver Mines, Limited, and in the Matter of the Winding-Up Act, Chapter 144, of the Revised Statutes of Canada and Amending Acts.

Pursuant to the winding-up order in the matter of the Carleton Place Silver Mines, Limited, made on the 11th day of May, 1915, the undersigned will, on Monday, the 7th day of June, 1915, at 10 o'clock in the forenoon, at his chambers at Osgoode Hall, Queen Street West, in the City of Toronto, appoint a permanent liquidator of the above-named Company, and let all parties then attend.

Dated at Toronto this 26th day of May, 1915.

J. A. C. CAMERON, O. R.

### JUDICIAL SALE—IN THE SUPREME COURT OF ONTARIO—Between Gough and Sellers Investments, Limited, Plaintiffs, and William J. S. Tremaine (by Judge-Master's Office), Defendants.

Pursuant to the judgment and order in this cause, bearing date respectively the 1st day of June and the 17th day of October, 1914, the order for sale, dated the 17th day of May, 1915, there will be offered for sale by public auction, with the approval of the Master-in-Ordinary of this court at Toronto, by street east, in the City of Toronto, at 12 o'clock noon on the 22nd day of June, 1915, the following lands and premises, either in bloc or in two parcels, to-wit:

Parcel No. One, being (1), parts of lots Nos. 51 and 52, according to registered plan No. 1242, containing a frontage of twenty-eight feet, ten and one-quarter inches (28 ft. 10 1/4 in.) on the east side of Keele Street, and (2), a part of said lots Nos. 51 and 52, according to registered plan No. 1242, having a frontage of twenty-eight feet, ten and one-quarter inches (28 ft. 10 1/4 in.) on the east side of Keele Street, and (3), a part of said lots Nos. 51 and 52, according to registered plan No. 1242, having a frontage of twenty-eight feet, ten and one-quarter inches (28 ft. 10 1/4 in.) on the east side of Keele Street, and (4), a part of said lots Nos. 51 and 52, according to registered plan No. 1242, having a frontage of twenty-eight feet, ten and one-quarter inches (28 ft. 10 1/4 in.) on the east side of Keele Street, and (5), a part of said lots Nos. 51 and 52, according to registered plan No. 1242, having a frontage of twenty-eight feet, ten and one-quarter inches (28 ft. 10 1/4 in.) on the east side of Keele Street, and (6), a part of said lots Nos. 51 and 52, according to registered plan No. 1242, having a frontage of twenty-eight feet, ten and one-quarter inches (28 ft. 10 1/4 in.) on the east side of Keele Street, and (7), a part of said lots Nos. 51 and 52, according to registered plan No. 1242, having a frontage of twenty-eight feet, ten and one-quarter inches (28 ft. 10 1/4 in.) on the east side of Keele Street, and (8), a part of said lots Nos. 51 and 52, according to registered plan No. 1242, having a frontage of twenty-eight feet, ten and one-quarter inches (28 ft. 10