

as when
 00 worse
 here five
 pounds,
 ge tenant
 own their
 here they
 ate years,
 he crops,
 an is not
 ke ample
 ve a good
 ly. This
 Manitoba
 ntry adds

RRERS.

labourers?"
 An agri-
 here before

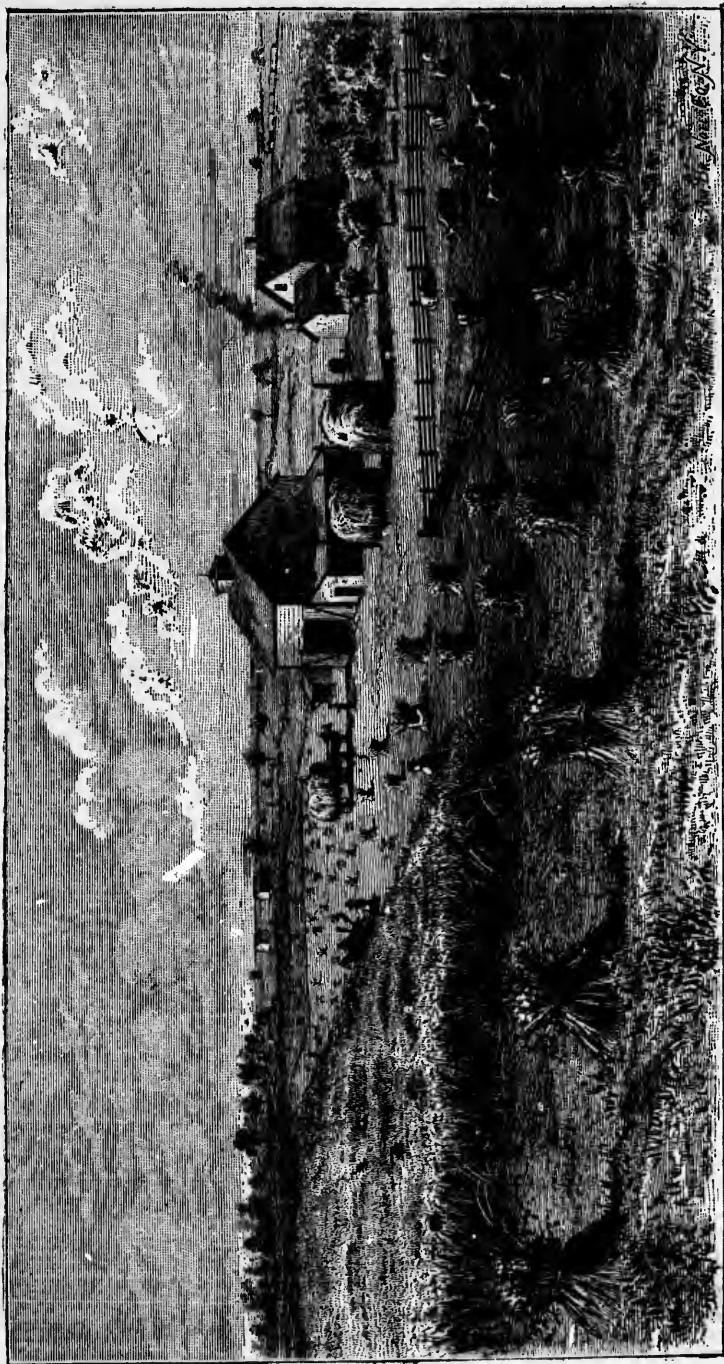
necessary to
 of agricul-

t by com-
 rt labourer
 ek, or \$175
 eep himself
 ge of wages
 360 a year ;
 here than
 er thing is
 n never be
 at \$3.50 a
 mer, owing
 f 160 acres
 men would
 aise enough
 d be assured
 l to want."

RAIN.

West many

I got from
 inches deep.
 I gathered
 ge la Prairie
 o principally
 ality of the
 ed. Indeed,
 ar's growth.
 s: This is a
 is a splendid
 ose to come
 e six months
 single case of
 e out of every
 upported as a



PRAIRIE FARM AFTER THREE YEARS.