

LAUREL.

What's this hue and cry of "laurel,"
Moses' suitors in a quarrel—
Food for wise men's mirth!

Any other plant's as holy,
Arbute, caprifole, or moly,
Ivy in the mesh;

Can it be that Daphne, hidden,
Smiles among the leaves unhidden—
Fair, less runaway!

EDITH M. THOMAS.

OUR CHESS COLUMN.

TO CORRESPONDENTS.

J. W. S., Montreal.—Papers to hand. Thanks.
J. N., St. John, N. B.—Letter received. Thanks. The
game shall appear very soon.

The Montreal Chess Club has recently been visited by
two gentlemen, who feel, no doubt, by their love for the
royal game, feel constrained in their travels to present
themselves wherever chessplayers are gathered together,

Both these gentlemen contested games with the mem-
bers of the Montreal Chess Club, with results, the par-
ticulars of which have not reached us, and inasmuch as
these encounters were mere off-hand performances, it is
of little consequence who were the victors.

We see it hinted that there is some prospect that the
year 1882, which is now near at hand, will witness a
grand Congress of chessplayers in London, England.
We hope that there is some foundation for the rumour,
and that the event will be of such a character as to be
creditable in every respect to the great Metropolis.

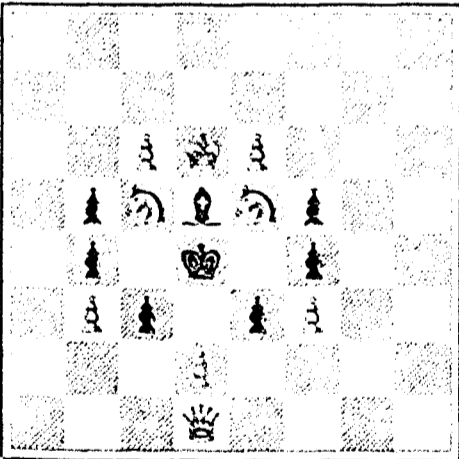
A match by telegraph was commenced last evening
between Messrs. Northcote and Starke, of the Toronto
Chess Club, and Messrs. Punched and Allen, of the
Detroit Chess Club. The match is the best of three
games, the first of which was played last night and won
by Toronto.—Toronto Globe, Nov. 17.

We hear that the match between Toronto and Detroit
was brought to a conclusion last Saturday in favor of
Toronto, the score being Toronto two games won,
Detroit one.—EDITOR C. C.

Mr. Blackburne informs me that a friend of his has
placed £200 at his disposal for the purpose of arranging
a match, or a tournament. Upon hearing this news, I
understand that some other volume of the game offered
to subscribe another £250 on condition that the whole
amount be given as a prize in a tournament to be held
next year at Simpson's Divan.—MARR, Dramatic News

PROBLEM No. 356

By J. P. Taylor.
BLACK.



White to play and mate in two moves.

GAME 483rd.
CHESS IN COLOGNE.

This brilliant specimen of blindfold play is said to be
the only serious game which Mr. Steinitz has played for
some years. For depth of combination and resplendent
skill it is rarely surpassed by games played over the
board. It was played at Cologne on the 27th of September,
1881, Mr. Steinitz playing sans voir against Herren
Kockelkorn and Wemmers in consultation. The notes
are from the Soustags Blatt.

(Steinitz Gambit.)

- White.—(Mr. S.)
1. P to K 4
2. Kt to Q B 3
3. P to K B 4
4. P takes K P
5. Kt to B 3
6. B to Kt 5
7. Castles
8. Q to K sq
9. P to Q 3
10. P takes Kt
11. P to Q 4
12. Q to Kt 3
13. Kt to Kt 5
14. B to Q 3
15. P to Q R 4
16. Kt takes B
17. Q to R 3
18. B to R 6

- 19. P takes P
20. Q to Kt 3
21. B to Kt 5
22. P to R 4
23. B to Q 2 (d)
24. Q to Kt 5
25. R takes R
26. H to B sq
27. P to Kt 4
28. P to R 5
29. B takes P
30. Q takes R P
31. P takes B (f)
32. B to Kt 5
33. K to R sq
34. R to H 4
35. B to R 6 (g)
36. R takes P oh (h)
37. Q takes Kt ch
38. B to Kt 7 ch
39. B to B 3, dis ch

NOTES.

(a) They cannot retreat to B 4, because of the reply Kt
takes P
(b) H 15... Kt to B 5, Black gets a bad game, as the
following continuation will show: 15... Kt B 5 16—P
takes P, P takes P 17—R R 6, and White has gained in
position.

(c) 22—P R 3 would be bad, for, after 22—B B 6 K R
2 (best), 24—P R 5 (best) his position is untenable
(d) The beginning of a fine combination. This design
was not discovered by the sides until the next move
when it was too late. At this point the intended assault
might, perhaps, be parried by K R 2, so as to protect
the Kt P, and to be able to meet Q K: 5 with Q K 2.

(e) He could make no move which would prevent the
advance of the Kt P. The plausible move, P B 4, re-
sults disastrously, e.g.:

- 26. P R 4
27. P Kt 4
28. P R 5
29. R P takes P
30. B B 4
31. B takes P
32. B B 7
33. B K 6 ch and
mates in three
moves.

(f) He might have won by 31—Q Kt 6 ch.
(g) Threatening mate in three moves by 36—Q 1 5
ch. They could not draw by R takes B
(h) Q Kt 5 ch would force mate in five moves
(i) If R takes B White mates in two moves
—From Turf, Field and Farm.

SOLUTIONS.

Solution of Problem No. 354.

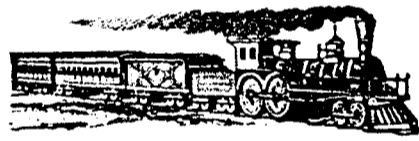
- White. Black.
1. Q to Q R 2. Any
2. Mates acc.

Solution of Problem for Young Players No. 352.

- White. Black.
1. K takes Q Kt P. Any
2. Mates acc.

PROBLEMS FOR YOUNG PLAYERS No. 353.

- White. Black.
K at Q Kt 5 K at K 4
Q at Q 7 Pawns at Q 4
R at K B 4 K R 2 and 4
R at K R sq
K at K B 5
Pawns at K B 5
White to play and mate in two moves.



Q. M. O. & O. RAILWAY.

Change of Time.

COMMENCING ON
Monday, July 25th, 1881.

Trains will run as follows:

Table with columns: MIXED, MAIL, EXPRESS. Rows list train routes and times between Montreal, Quebec, and other stations.

Magnificent Palace Cars on all Day Passenger
Trains, and Sleeping Cars on Night Trains.

Sunday Trains leave Montreal and Quebec at 4 p.m.
All Trains Run by Montreal Time.

GENERAL OFFICES—13 PLACE D'ARMES
TICKET OFFICE:
13 Place D'Armes, MONTREAL.

Opposite ST. LOUIS HOTEL, Quebec.
L. A. SENECA, Gen'l Supt.

CADBURY'S COCOA ESSENCE.
PURE, SOLUBLE, REFRESHING.

It is often asked, "Why does my doctor recommend Cadbury's Cocoa Essence?" The reason is that being
absolutely genuine, and concentrated by the removal of the superfluous fat, it contains FOUR TIMES the
AMOUNT OF NITROGENOUS or FLESH-FORMING CONSTITUENTS than the average of other Cocos
which are mixed with sugar and starch.
CANADIAN DEPOT: 34, RADEGONDE ST., MONTREAL.
Beware of imitations, which are often pushed by Shopkeepers for the sake of extra profit.

APPRENTICE WANTED.

Wanted, a respectable, well-educated
young man, with a taste for art, to learn
Pictorial or Letter Engraving. Good
references required. Apply to

BRITISH AMERICAN BANK NOTE CO.
MONTREAL.

British American
BANK NOTE COMPANY,

MONTREAL.
Incorporated by Letters Patent.
Capital \$100,000.

General Engravers & Printers

Bank Notes, Bonds,
Postage, Bill & Law Stamps,
Revenue Stamps,
Bills of Exchange,
DRAFTS, DEPOSIT RECEIPTS,
Promissory Notes, &c., &c.,
Executed in the Best Style of Steel Plate
Engraving.

Portraits a Specialty.
G. B. BURLAND,
President & Manager.

APPRENTICE WANTED.

Wanted a respectable well recom-
mended boy as an apprentice to the
Bank Note Printing Business.
Apply with references

BRITISH AMERICAN BANK NOTE CO.
MONTREAL.

THE BURLAND
LITHOGRAPHIC COMPANY

(LIMITED)
CAPITAL \$200,000,
GENERAL.

Engravers, Lithographers, Printers
AND PUBLISHERS,
3, 5, 7, 9 & 11 BLEURY STREET,
MONTREAL.

THIS ESTABLISHMENT has a capital equal
to all the other Lithographic firms in the coun-
try, and is the largest and most complete Estab-
lishment of the kind in the Dominion of Canada,
possessing all the latest improvements in machi-
nery and appliances, comprising:—

- 12 POWER PRESSES
1 PATENT LABEL GLOSSING MACHINE
1 STEAM POWER ELECTRIC MACHINE.
4 PHOTOGRAPHING MACHINES.
2 PHOTO-ENGRAVING MACHINES.

Also CUTTING, PERFORATING, NUMBERING, EM-
BOSSING, COPPER PLATE PRINTING and all other
Machinery required in a first class business.

ALL KINDS OF ENGRAVING, LITHOGRAPHING, FLEC-
TROTYPING AND TYPE PRINTING EXECUTED IN THE
BEST STYLE

AND AT MODERATE PRICES

PHOTO-ENGRAVING and LITHOGRAPHING from
pen and ink drawings A SPECIALTY.

The Company are also Proprietors and Publishers of the
CANADIAN ILLUSTRATED NEWS,
DOPINION PUBLIQUE, and
SCIENTIFIC CANADIAN

A large staff of Artists, Engravers, and Skilled Work
men in every department.
Orders by mail attended to with promptness, and
prices the same as if given personally

G. B. BURLAND

Montreal Post-Office Time-Table

NOVEMBER, 1881

Table with columns: DEPARTS, MAILS, CLOSING. Rows list departure times for various routes including Ontario & Western Provinces, Quebec & Eastern Provinces, and Local Mails.

(A) Postal Car Bags open till 8 15 a.m., and 2 15 p.m.
(B) Do 9 00 p.m.

Mails leave for Lake Superior and Bruce Mines, &c.
Mails for places on Lake Superior will leave Windsor
on Mondays, Wednesdays and Fridays. Mails for
Bruce Mines, Garden River, Little Current, &c.,
will leave Parry Sound on Tuesdays.

Mails leave New York by Steamer:

- For Bahamas, 5th and 22nd November.
Bermuda, 3rd and 17th November.
Cuba, 3rd November.
Cuba and Porto Rico, 10th, 17th and 24th November.
Cuba, Porto Rico & Mexico, 3rd, 17th & 24th Nov.
Cuba and Mexico.
Curaçoa and Venezuela, 12th & 26th November.
Jamaica and West Indies, 17th November.
Jamaica and the U.S. of Columbia (except Panama),
11th and 25th November.
St. Thomas and Barbadoes.
For Hayti direct, 4th, 15th and 25th November.
Hayti, St. Domingo and Turks Island, 1st Nov.
Hayti and Maracaibo.
Porto Rico, 9th, 23rd and 30th November.
Santiago and Cienfuegos, Cuba, 8th November.
South Pacific and Central American Ports, 10th,
19th and 30th November.
Brazil and the Argentine Republic, 5th and 18th
November.
Windward Islands, 5th and 22nd November.
Greytown, Niagarua, 10th November.

Mails leave San Francisco:
For Austria and Sandwich Islands, 19th November.
For China and Japan, 4th and 19th November.