

# The Canadian Engineer

A weekly paper for Canadian civil engineers and contractors

## ECONOMICAL DEVICES IN CRIBWORK CONSTRUCTION

DETAILS OF CONSTRUCTION OF SKIDWAY USED IN CONNECTION WITH BUILDING OF CRIBS UP TO FIFTY FEET IN LENGTH

By A. E. EASTMAN, A.M.Can.Soc.C.E.

IN the following article the writer does not attempt to advance, perhaps, anything new, or claim to be the originator of any of the devices described. He is of the opinion, from observation during his experience, that it often proves that some cheap, easily built and easily maintained device will save its value, or cost, to a contractor many times for certain work. Hence

up to, say, fifty feet long. In the particular case where this style was used the ways were located on a canal bank, and the crib was forty feet long. The longitudinal or under timber was 12 in. by 12 in., solidly blocked up to the required height, and made level throughout its length. The ways were of the same size timber. Under each way and just back of where it rested on the longitudinal, another piece of 12 in. by 12 in., from three to five feet long, was securely bolted to the way, the object of this being that, when the crib was launched, the ways would not go into the water, but be held by this block. The ways were not fastened to the longitudinal.

On these ways were placed the "butter-boards." These boards were 4 in. by 12 in. plank, with a piece of 3 in. by 8 in. securely bolted to each side to act as guides to keep the "butter-boards" straight on the ways during launching, and thus assist in keeping one end of the crib from going too fast. As a lubricant between ways and "butter-boards" a mixture of tallow and oil was used and placed before starting a crib.

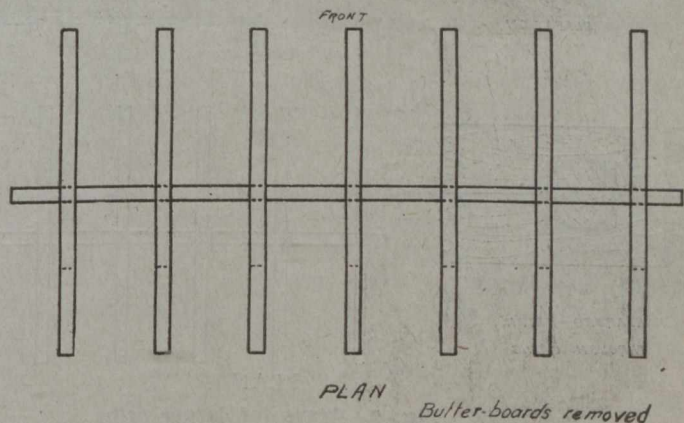
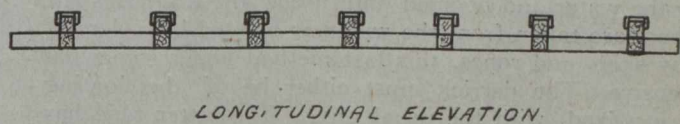
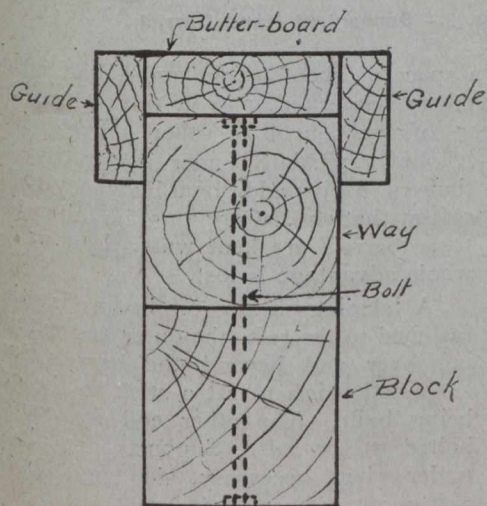
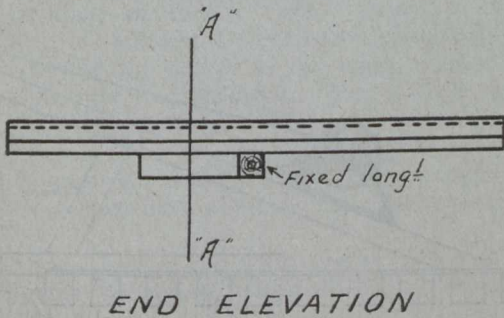


Fig. 1.—Ways on which to construct short cribs.

these notes. The devices described will be seen to be chiefly applicable to cribwork. No attempt has been made to give fixed dimensions, but each case would have to be governed by existing circumstances.

Fig. 1 gives the general plan and necessary details for a skidway or ways on which may be built light cribs

The "butter-boards" being in position, a crib was begun, the bottom being made to conform to the dredged crib-seat as determined by soundings, blocking being placed, where necessary, between the lower courses and the "butter-boards." Care was taken to keep the centre of gravity of the crib back of the longitudinal, but as