

Early June HOLIDAYS



MUSKOKA

Hotel and boarding house rates in Muskoka during June are lower than regular season rates. June in Muskoka seems greener and leafier than anywhere else. The water is soft. The air is soothing. There is a balmy, healing feeling about the woods and lakes. Have you thought of a month of health-giving rest before the summer travelling and entertaining begins? The Canadian Northern Ontario railway is the shortest route and has the best trains to the Muskokas. Steamer meets train at Bala Park and Lake Joseph Wharf for all points on the lakes. Holiday round trip tickets for the season.

BEAVERTON

Sometimes a new railway makes an old neighborhood over again. This happened with Beaverton, on Lake Simcoe, sixty miles from Toronto, when it was reached by the Canadian Northern Ontario Railway. Summer boarding on the lake shore; a sandy beach sloping 1,000 feet to a depth of six feet; splendid picnic grounds for one day excursions. Steamers and carriages. Rowboats and launches by the hour. If you don't know Beaverton it will only take a short time to run up from Toronto and see it.

LATER SUMMER TRIPS

- The Laurentians via Canadian Northern Quebec from Montreal.
- Lake St. John and the Saguenay via Quebec and Lake St. John from Quebec.
- Ocean Shore of Nova Scotia via Halifax and South Western from Yarmouth to Halifax.
- Summering Coast of Cape Breton Island via Inverness Ry. from Pt. Tupper to Inverness.
- The Superior Divide Canoeing Waters. Prairie Lands, Lakes, Rivers and Wheatfields of Manitoba and Saskatchewan via Canadian Northern Railway.

BOOKLETS—Information Bureau, Canadian Northern Railway System, Toronto.



"The Spirit of the Pacific"

At the Alaska-Yukon-Pacific Exposition

SEATTLE—JUNE 1 TO OCTOBER 16

Do you grasp the full significance of "The Spirit of the Pacific?" Do you realize the wonderful growth and stupendous possibilities of the Northern Pacific Coast country? It is the mission of the Alaska-Yukon-Pacific Exposition to exploit the resources, products and industries of the territories from which it is named—an exploitation that will be a revelation to the Eastern visitor—to you.

— The journey by the —

Canadian Pacific Railway

is worth making for its own sake—if only for the day spent traversing the world's grandest mountain scenery. Perfect train service. Exceptionally low rates—May 20 to September 30. For illustrated literature and full information, —address—

R. L. THOMPSON, District Passenger Agt., Toronto



The Sea-Side

100's of Safe Beaches
Water agreeable Temperature, Accommodation at Reasonable Rates.

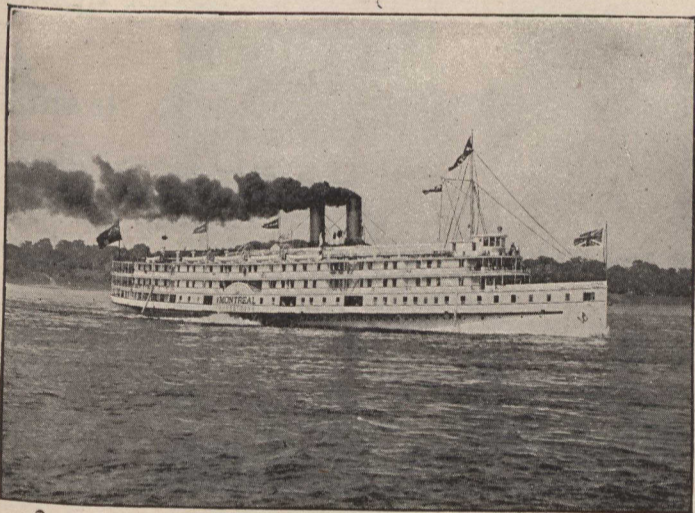
In Quebec, New Brunswick, Nova Scotia, Prince Edward Island

Write for free copy of "Tours to Summer Haunts." General Passenger Dept.

INTERCOLONIAL RAILWAY MONCTON, N.B.

VACATION SUGGESTIONS

"The River St. Lawrence Trip"



New Observation Steamers "Rapids King" and "Rapids Queen" in service this season

The Scenic Route

Richelieu & Ontario Navigation Company

For illustrated booklet "Niagara to the Sea" send 6c in postage to

H. Foster Chaffee or Thos. Henry
A.G.P.A., Toronto, Can. Traffic Mgr., Montreal, Can.

Lake Ontario
1000 Islands
Rapids
St. Lawrence
Montreal
Quebec
and the
Far Famed
Saguenay River



The Way to Detroit, Chicago and the West is Over the Only Double-Track Line

The excellent service of the Grand Trunk Railway System to the West is the reason why the large majority of experienced travelers will go no other way; as is also the case with the business between Toronto and Montreal; the advantages of a double-tracked line appeal to all. Three splendid trains leave daily as follows:

| | Day Express | International Limited | Night Express |
|-----------------|-------------|-----------------------|---------------|
| Leave Toronto— | 8 a. m. | 4.40 p. m. | 11.00 p. m. |
| Arrive Detroit— | 1.45 p. m. | 10.20 p. m. | 6.45 a. m. |
| Arrive Chicago— | 9.25 p. m. | 7.42 a. m. | 2.15 p. m. |

Pullman modern sleepers, library, cafe, parlor and dining car service. Direct connections at Detroit for the South and at Chicago with all lines for West, Northwest and South.

Do not be persuaded to take any other line

Secure tickets and make reservations at City Ticket Office, northwest corner King and Yonge Streets. Phone Main 4209.

MOOSE JAW

SASKATCHEWAN, CANADA

398 miles west of Winnipeg.

The railway centre of the C. P. R. in South Saskatchewan.

The rush for land continues this year.

April with 2378 quarter section entries—100 entries for each office day, made MOOSE JAW the busiest land district in Western Canada.

There are thousands of quarter sections still to be homesteaded, pre-empted and located with scrip.

MOOSE JAW is reaping a business harvest from this inrush of settlers.

5 Hotels cannot accommodate guests. Boarding houses are crowded. There is an opening for a first-class hotel with from 60 to a 100 rooms.

Business is always increasing.

Following the land rush will come a wave of railway extension—competing lines.

The time is ripe for a street railway in MOOSE JAW. Definite plans should be made by any capitalist interested before railway crossings and other difficulties make right of way expensive.

A liberal franchise might be secured from the city corporation. There are many opportunities for profitable investment.

FOR INFORMATION WRITE TO

Hugh McKellar—Commissioner Board of Trade—Moose Jaw, Sask.

An Electric Iron

in the Laundry makes ironing pleasant work. It saves steps, time, trouble, temper and perspiration. It makes the domestic contented because she can iron faster and better and have more time to herself.

The Electric iron we sell heats uniformly over the whole ironing surface and remains hot during the entire ironing process. One Electric iron takes the place of several old fashioned irons. It is inexpensive and will last for many years.

ASK FOR AN IRON ON TRIAL. FREE FOR THIRTY DAYS.

Use Toronto Electric Service

THE TORONTO ELECTRIC LIGHT CO. LIMITED

12 Adelaide Street East