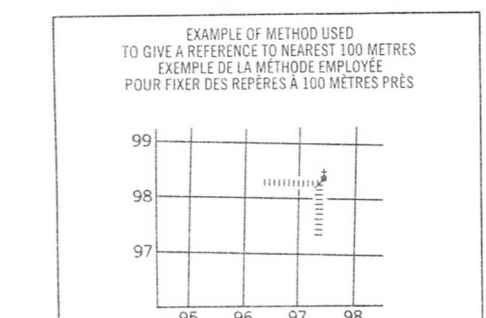
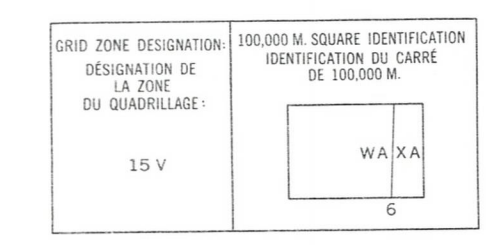
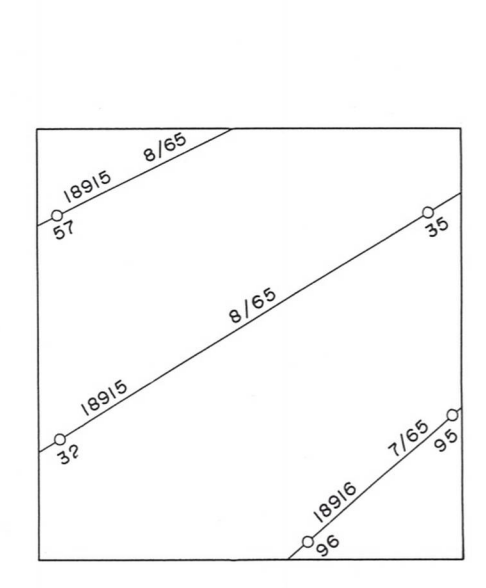


LEGEND - LÉGENDE

ROADS AND RELATED FEATURES		ROUTES ET OUVRAGES CONNEXES	
HARD SURFACE, ALL WEATHER	SURFACE DURE, TOUTES SAISONS	ROAD	ROAD
LOOSE SURFACE	GRAVIER	ROAD	ROAD
CART TRACK, WINTER ROAD, UNDER CONSTRUCTION	CHEMIN DE TERRE, D'HIVER, EN CONSTRUCTION	ROAD	ROAD
TRAIL, CUTLINE, PORTAGE	SENTIER, PERCÉE, PORTAGE	ROAD	ROAD
BUILT UP AREA	AGGLOMÉRATION	ROAD	ROAD
RAILWAY, SIDING, STATION, STOP	CHEMIN DE FER, VOIE D'ÉVITEMENT, GARE, ARRÊT	ROAD	ROAD
BRIDGE	PONT	ROAD	ROAD
SEAPLANE BASE, ANCHORAGE	HYDROAÉROPORT, MOULAGE	ROAD	ROAD
LANDMARK FEATURES		POINTS DE REPÈRE	
HOUSE, BARN	MAISON, GRANGE	POINT	POINT
CHURCH, SCHOOL	ÉGLISE, ÉCOLE	POINT	POINT
POST OFFICE	BUREAU DE POSTE	POINT	POINT
HISTORICAL SITE	LIEU HISTORIQUE	POINT	POINT
TOWERS: FIRE, RADIO	TOURS: FEU, RADIO	POINT	POINT
WELL: OIL, GAS	PUITS: PÉTROLE, GAZ	POINT	POINT
TANK: OIL, GASOLINE, WATER	RÉSERVOIR: PÉTROLE, ESSENCE, EAU	POINT	POINT
TELEPHONE LINE	LIGNE TÉLÉPHONIQUE	POINT	POINT
POWER TRANSMISSION LINE	LIGNE DE TRANSPORT D'ÉNERGIE	POINT	POINT
MINE	MINE	POINT	POINT
CUTTING, EMBANKMENT	TRANCHÉE, REMBLAI	POINT	POINT
GRAVEL PIT	FOSSE DE GRAVIER	POINT	POINT
BOUNDARIES AND CONTROL		FRONTIÈRES ET POINTS DE RÉFÉRENCES	
INTERNATIONAL, PROVINCIAL, BOUNDARY MONUMENT	INTERNATIONALE, PROVINCE, BORNE FRONTIÈRE	POINT	POINT
COUNTY, DISTRICT	COMTE, DISTRICT	POINT	POINT
TOWNSHIP, PARISH - SURVEYED - UNSURVEYED	CANTON, PAROISSE - ARPENTÉ - NON ARPENTÉ	POINT	POINT
TOWNSHIP, DLS - SURVEYED - UNSURVEYED	CANTON, DLS - ARPENTÉ - NON ARPENTÉ	POINT	POINT
MUNICIPALITY	MUNICIPALITÉ	POINT	POINT
INDIAN RESERVE, PARK, ETC.	RÉSERVE INDIENNE, PARC, ETC.	POINT	POINT
HORIZONTAL CONTROL POINT	REPÈRE PLANIMÉTRIQUE	POINT	POINT
BENCH MARK	REPÈRE DE NIVELLEMENT	POINT	POINT
SPOT ELEVATION, ELEVATION APPROXIMATE	POINT COTÉ, ÉLEVATION APPROXIMATIVE	POINT	POINT
DRAINAGE AND RELATED FEATURES		DRAINAGE ET OUVRAGES CONNEXES	
STREAM, SHORELINE: INDEFINITE	COURS D'EAU, RIVE, IMPRÉCISE	POINT	POINT
DIRECTION OF FLOW	DIRECTION DU COURANT	POINT	POINT
LAKE, INTERMITTENT	LAC, INTERMITTENT	POINT	POINT
INUNDATED, FLOODED LAND	TERRAIN INONDÉ	POINT	POINT
MARSH OR SWAMP (WOODED)	MARAIS OU MARECAGE (BOISÉ)	POINT	POINT
DRY RIVER BED WITH CHANNELS	LIT DE COURS D'EAU TARI AVEC CHENAUX	POINT	POINT
SAND, ABOVE, IN WATER	SABLE, AU DESSUS, DANS L'EAU	POINT	POINT
STRING BOG	MARECAGES EN ENFILADE	POINT	POINT
TUNDRA PONDS, POLYGONS	TOUNDRA: ETANGS, SOLS POLYAGONAUX	POINT	POINT
RAPIDS	RAPIDES	POINT	POINT
FORESHORE FLATS	ESTRANS	POINT	POINT
ROCK	ROCHE	POINT	POINT
DAM	BARRAGE	POINT	POINT
WHARF	QUAI	POINT	POINT
DITCH	FOSSE	POINT	POINT
RELIEF FEATURES		RELIEF	
CONTOURS	COURBE DE NIVEAU	POINT	POINT
APPROXIMATE CONTOUR	COURBE DE NIVEAU APPROXIMATIF	POINT	POINT
DEPRESSION	COURBE DE CUVETTE	POINT	POINT
ESKER	ESKER	POINT	POINT
PINGO	PINGO	POINT	POINT
SAND, SAND DUNES	SABLE, DUNES	POINT	POINT
PALSA BOG	PALSE	POINT	POINT
WOODED AREA	RÉGION BOISÉE	POINT	POINT



REFERENCE POINT
POINT DE RÉFÉRENCE

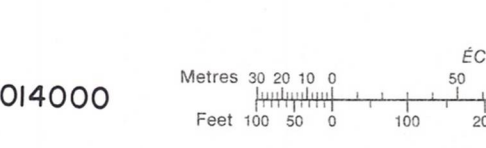
CHURCH - ÉGLISE (in annual publication)

(ASTRID) Read number on grid line immediately below point.
LONGITUDE: Note the number of the line of quadrillage immediately to the right of the point.
Estimate tenths of a square from this line eastward to point.
Estimate the number of squares of the grid from this line eastward to point.
Estimate the number of squares of the grid from this line northward to point.
Estimate the number of squares of the grid from this line northward to point.
Estimate the number of squares of the grid from this line northward to point.

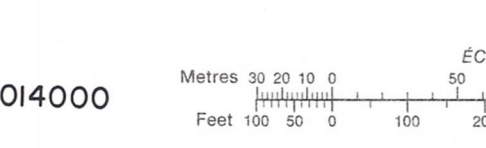
55 0/12	55 0/11	55 0/10
55 0/5	55 0/6	55 0/7
55 0/4	55 0/3	55 0/2

The 1973 MAGNETIC BEARINGS are 10°11'18" (11 min) WEST of GRID NORTH.
Les REPÈRES MAGNÉTIQUES en 1973 est à 10°11'18" (11 min) OUEST du NORD QUADRILLAGE.

GRID NORTH is 1°34' (34 min) EAST of TRUE NORTH for centre of map.
NORD QUADRILLAGE est 1°34' (34 min) à l'est du NORD GÉOGRAPHIQUE au centre de la carte.

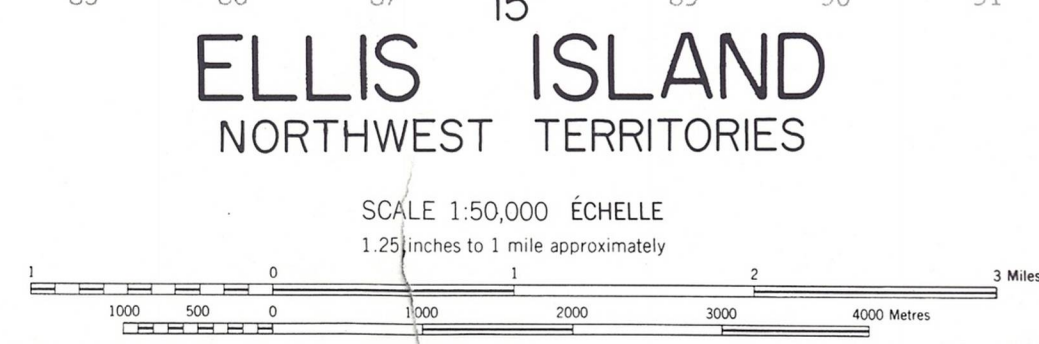


ONE THOUSAND METRE
UNIVERSAL TRANSVERSE MERCATOR GRID
ZONE 15
QUADRILLAGE DE MILLE MÈTRES
UNIVERSAL TRANSVERSE DE MERCATOR



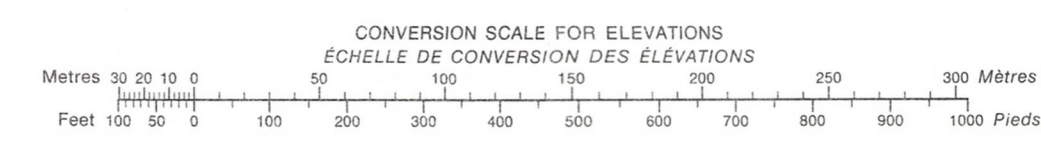
7014000
574000

PRODUCED BY SURVEYS AND MAPPING BRANCH,
DEPARTMENT OF ENERGY, MINES AND RESOURCES,
OTTAWA, 1972, FROM PHOTOGRAPHS TAKEN IN 1965
CONTOUR INTERVAL ----- 25 FEET



ÉTABLIE PAR LA DIRECTION DES LEVÉS ET DE LA
CARTOGRAPHIE, MINISTÈRE DE L'ÉNERGIE, DES
MINES ET DES RESSOURCES, OTTAWA, EN 1972,
D'APRÈS DES PHOTOGRAPHES PRISES EN 1965
ÉQUIDISTANCE DES COURBES ----- 25 PIEDS

7014000
60000



55%