

100 ROOMS

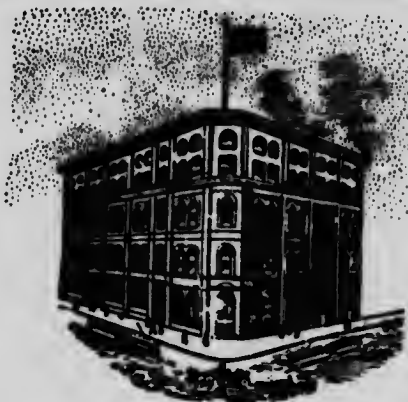
## HOTEL DALY

First door West of Union Depot.  
Remodeled and enlarged. New  
Management.

Rates A.P.—\$1.50 and \$2.00.

E.P.—\$1.00 up.

**E. R. HURST, Proprietor**



## THE NEW Russell House

CHAS. E. IRESON, Prop.

217 YONGE ST., TORONTO, CAN.

The most centrally located  
Hotel in the city for the retail  
stores and theatres.

Take Yonge, Winchester or Avenue  
Road cars from depot. These cars stop  
at hotel door.

Rates \$1.50 and \$2.00 per day

## Grand Union Hotel

Cor. Front and Simcoe Sts.

Opposite Union Station

CHAS. / CAMPBELL, PROP.

Rates \$2.00 to \$3.00 per day

## King Edward Hotel

King and Victoria Sts.

American and  
European Plans

Fire Proof. Rates Moderate.

**W. C. BAILEY, MANAGER**

## Rossin House

Cor. King and York Sts.

**A. & A. NELSON, PROPS.**

American Plan, \$2.00 per day up.

European Plan, \$1.00 per day up.