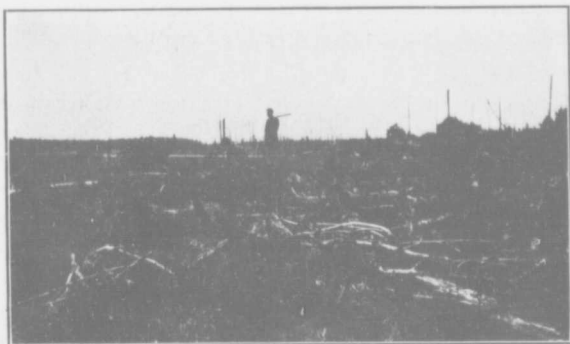


ince and added that the Dominion was considering the advisability of establishing an experimental farm near Fort George.

Province, April 16th, 1912:

BUYING LARGE TRACTS OF LAND

Entrusted with the commission of selecting large tracts of land in British Columbia for prominent British landowners, Capt. C. E. Hutton, of London, England, reached Vancouver last night and is a guest at the Hotel Vancouver. The visitor is a former resident of the Okanagan Valley. He was a member of the Duke of Sutherland's party which visited British Columbia last summer and which also included Lord Desborough and Lord Charles Beresford. Largely owing to his representations the Duke of Sutherland acquired large areas of farm lands in the Fort George district on the main line of the Grand Trunk Pacific Railway. The Duke, it is understood, will visit this province shortly in connection with plans for a colonization project involving the settlement of his farm tenants on these lands. His visit is expected to be a short one, to be followed by a second visit in August.



Nearly All Salmon River Lands Are Easily Cleared