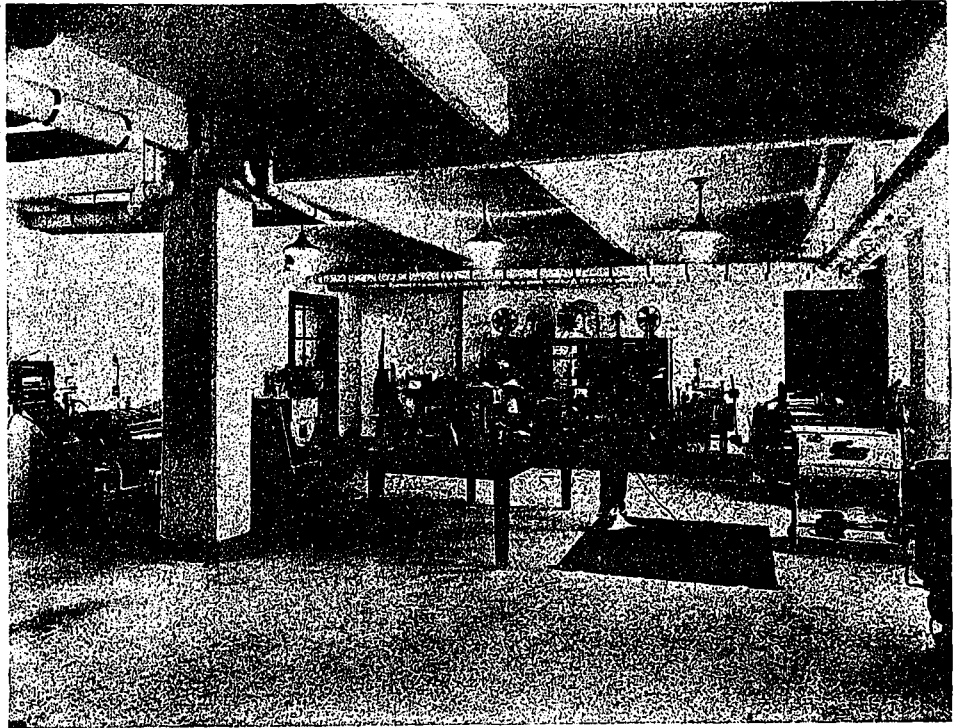
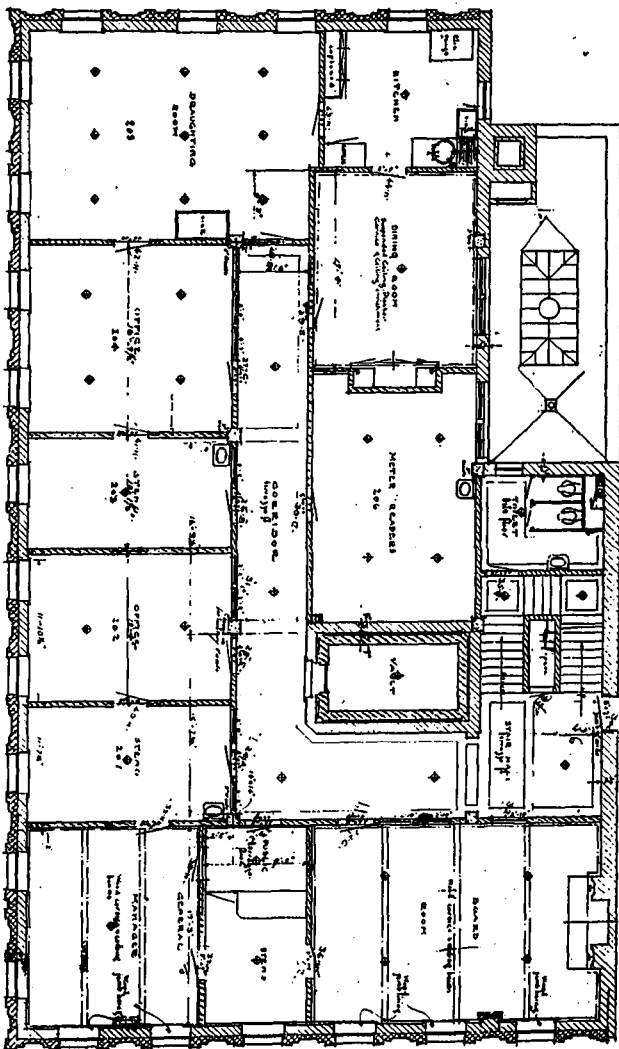


able comment has been made upon its neat appearance and general efficiency. In the basement display room, which, by the way, is entirely artificially lighted, another new system of lighting has been used, in the form of lamps placed behind a false wall directed against a wall painted a sky blue immediately behind the false wall, and are placed so as to reflect the light back through the windows in the false wall, thus making an indirect lighting through ground glass, which, it is claimed, is the nearest approach to daylight possible. By referring to the photos of the basement display room, it will be seen that the distribution of light is perfect, there being practically no shadows. On the ground floor bracket lights have been mounted on the columns and pilasters, adding very much to the artistic beauty of the room.

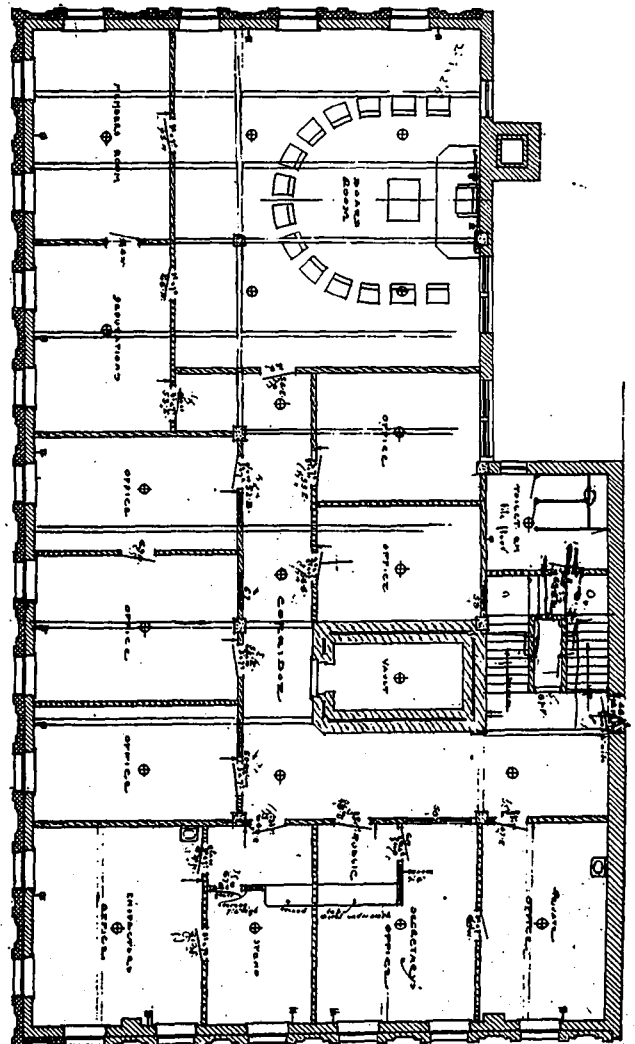


BASEMENT DISPLAY ROOM.

PUBLIC UTILITIES BUILDING, LONDON, ONT.



SECOND FLOOR PLAN.



THIRD FLOOR PLAN.