



FIG. 31. No. 4411.—LADIES' COSTUME. PRICE 35 CENTS.

This design cuts from 30 to 40 inches bust measure, and the quantity of material required for each size, of 42-inch goods, $7\frac{1}{4}$ yards, or 54-inch goods, $5\frac{1}{2}$ yards. If made of materials illustrated, 4 yards of 54-inch material, $5\frac{1}{2}$ yards of velvet and $11\frac{1}{2}$ yards of fur trimming will be required to make the medium size.



FIG. 37. No. 4389.—LADIES' COSTUME. PRICE 35 CENTS.

Quantity of material (42 inches wide) for 30 inches, $6\frac{1}{2}$ yards; 32 inches, $6\frac{1}{2}$ yards; 34 inches, $6\frac{1}{2}$ yards; 36 inches, $6\frac{3}{4}$ yards; 38 inches, $6\frac{7}{8}$ yards; 40 inches, 7 yards.

Quantity of Material (54 inches wide) for 30 inches, $4\frac{1}{2}$ yards; 32 inches, 5 yards; 34 inches, $5\frac{1}{2}$ yards; 36 inches, $5\frac{1}{2}$ yards; 38 inches, $5\frac{1}{2}$ yards; 40 inches, 6 yards.

Wide trimming for skirt, $1\frac{1}{2}$ yards; narrow trimming, $1\frac{1}{2}$ yards.



FIG. 51. No. 4415.—GIRL'S COAT. PRICE 20 CENTS.

Quantity of Material (21 inches wide) for 2 years, 4 yards; 3 years, $4\frac{1}{2}$ yards; 4 years, 5 yards; 5 years, $5\frac{1}{2}$ yards; 6 years, 6 yards; 7 years, $6\frac{1}{2}$ yards; 8 years, 7 yards; 9 years, $7\frac{1}{2}$ yards; 10 years, 8 yards.

Quantity of Material (42 inches wide) for 2 years, 2 yards; 3 years, $2\frac{1}{4}$ yards; 4 years, $2\frac{1}{2}$ yards; 5 years, $2\frac{3}{4}$ yards; 6 years, 3 yards; 7 years, $3\frac{1}{4}$ yards; 8 years, $3\frac{1}{2}$ yards; 9 years, $3\frac{3}{4}$ yards; 10 years, 4 yards.

Silk for sash, $2\frac{1}{2}$ yards.

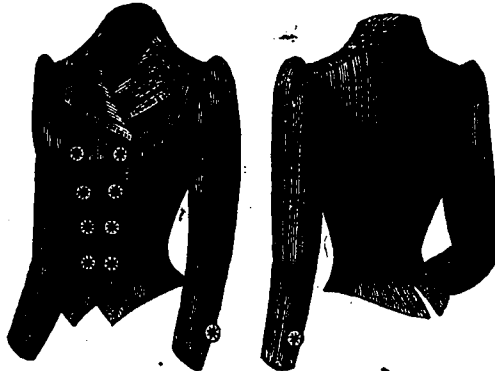


FIG. 39. No. 4408.—LADIES' BASQUE. PRICE 25 CENTS.

Quantity of Material (21 inches wide) for 30 inches, 3 yards; 32 inches, 3 yards; 34 inches, $3\frac{1}{4}$ yards; 36 inches, $3\frac{1}{4}$ yards; 38 inches, $3\frac{1}{2}$ yards; 40 inches, $3\frac{1}{2}$ yards; 42 inches, $3\frac{3}{4}$ yards.

Quantity of Material (42 inches wide) for 30 inches, $1\frac{1}{2}$ yards; 32 inches, $1\frac{1}{2}$ yards; 34 inches, $1\frac{1}{2}$ yards; 36 inches, $1\frac{5}{8}$ yards; 38 inches, $1\frac{7}{8}$ yards; 40 inches, $1\frac{3}{4}$ yards; 42 inches, $1\frac{7}{8}$ yards.

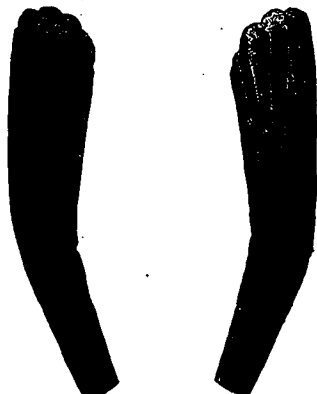


FIG. 36. No. 4406.—LADIES' LEG O' MUTTON SLEEVE. PRICE 10 CENTS.

Quantity of material (21 inches wide) for 10 inches around muscular part of arm, $1\frac{1}{2}$ yards; 11 inches around muscular part of arm, $1\frac{1}{2}$ yards; 12 inches around muscular part of arm, $1\frac{1}{2}$ yards; 13 inches around muscular part of arm, 2 yards; 14 inches around muscular part of arm, $2\frac{1}{2}$ yards; 15 inches around muscular part of arm, $2\frac{1}{2}$ yards.

Quantity of material (42 inches wide) for 10 inches around muscular part of arm, $\frac{3}{4}$ of a yard; 11 inches around muscular part of arm, $\frac{3}{4}$ of a yard; 12, 13 inches around muscular part of arm, 1 yard; 14, 15 inches around muscular part of arm, $1\frac{1}{4}$ yards.



FIG. 32. No. 4412.—LADIES' COAT. PRICE 30 CENTS.

Quantity of material (42 inches wide) for 30 inches, $5\frac{3}{8}$ yards; 32 inches, $5\frac{3}{8}$ yards; 34 inches, $5\frac{1}{2}$ yards; 36 inches, $5\frac{1}{2}$ yards; 38 inches, $5\frac{3}{4}$ yards; 40 inches, $5\frac{3}{4}$ yards.

Quantity of Material (54 inches wide) for 30 inches, $4\frac{1}{2}$ yards; 32 inches, $4\frac{1}{2}$ yards; 34 inches, $4\frac{1}{2}$ yards; 36 inches, $4\frac{1}{2}$ yards; 38 inches, $4\frac{1}{2}$ yards; 40 inches, $4\frac{1}{2}$ yards.

If made of materials illustrated, $3\frac{3}{4}$ yards of 54-inch goods and $2\frac{1}{2}$ yards of 27-inch plush will be required to make the medium size.



FIG. 34. No. 4412.—LADIES' COAT. PRICE 30 CENTS.

For Quantities, see FIG. 32.