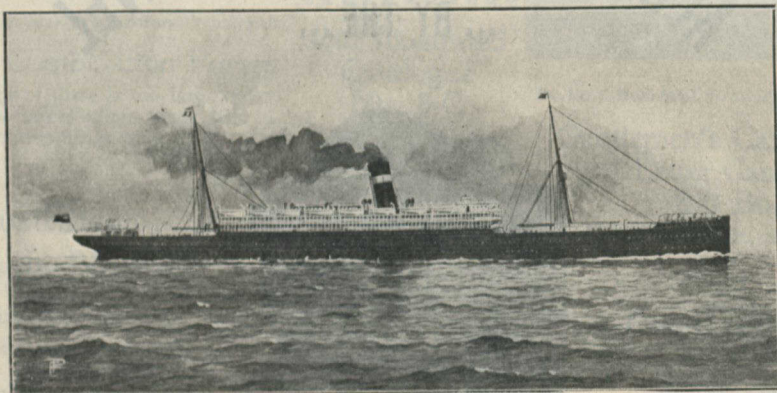


# ALLAN LINE

## ROYAL MAIL STEAMERS

Montreal, St. John, N.B., or Halifax to Liverpool



The Allan Line Twin Screw Steamer "Tunisian."

### IONIAN, New, Twin Screws, 10,000 Tons

BAVARIAN, Twin Screws, 10,375 Tons

CORINTHIAN, - - - 8,000 Tons

PRETORIAN, - - - 6,100 Tons

TUNISIAN, Twin Screws, 10,575 Tons

SICILIAN, - - - 7,500 Tons

PARISIAN, - - - 5,500 Tons

These fine new Steamers, or others of the fleet, sail **Weekly** from Liverpool and from Montreal, St. John, N.B., or Halifax, calling at Londonderry.

The steamers are amongst the largest and finest in the Transatlantic Lines, and are excelled by none in the accommodation for all classes of passengers. The Saloons and Staterooms are amidships where least motion is felt, and bilge keels have been fitted to all the Steamers which has reduced the rolling motion to the minimum.

Electric lights are in use throughout the ships, and the cabins have all the comforts of modern first-class hotels.

The hour of sailing is arranged to make connection with trains arriving from the West and South. No expense for transfer.

The distance is shorter than from any American port, and the rates of passage very reasonable.

For further particulars apply to any Agent of the Company.

H. BOURLIER, 77 Yonge Street, TORONTO  
or H. & A. ALLAN, MONTREAL