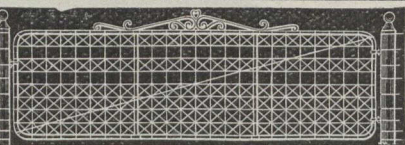


The electrically-welded, solid-piece frame gives strength and stiffness to

Peerless Farm and Ornamental Gates

We build Peerless Gates to last a lifetime—handy, convenient and attractive. They remain staunch and rigid through all kinds of rough usage. The frame is

THE BANWELL HOXIE WIRE FENCE CO., Ltd., Box 0, Hamilton, Ont., Winnipeg, Man.



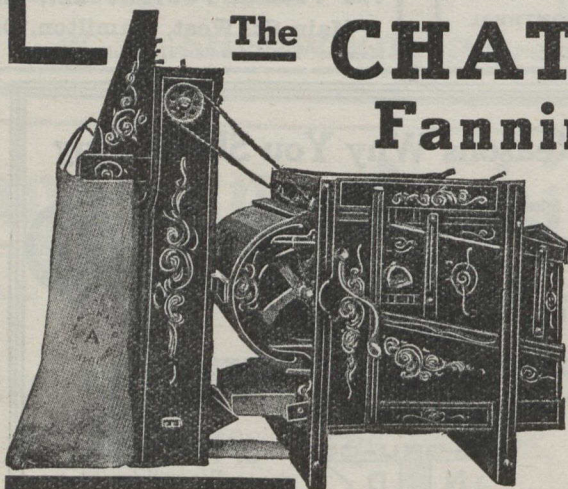
made of heavy steel tubing electrically welded into one solid piece. The Peerless Gate, like the Peerless Fence, saves expense because it never needs repairs. We also make poultry, lawn and farm fences of exceptional strength. Write for free book.

Clean Your Seed

Separate and grade ALL kinds of seeds—eliminate ALL weed seed, shrunken grains, broken particles and dust. You can do it easily, quickly, thoroughly with the Chatham Fanning Mill and insure

Better, Surer Crops — Highest Market Prices

Don't grow weeds or plant weak seeds. Let us ship you a Chatham immediately, freight prepaid, so you can use it **right away**. You pay nothing unless you are fully satisfied that



The CHATHAM Fanning Mill

actually does all we claim for it. Then you can take 2 years to pay for it, if you want to. Anyway

**TRY IT
30 Days
FREE**

and see how it saves you work and increases your profits.

The only machine that will rid your clover of that "Plantain" weed

which is almost ruining nearly every Ontario farmer's clover this year. Maybe you don't know that your clover is full of this weed, but you will when you try to sell it, or when you plant it next year. This pest has been bothering Ohio and Illinois farmers until the Chatham conquered it for them, as hundreds of farmers testify. If the Chatham doesn't do the work for you just send it back and it hasn't cost you a cent. My free book tells all. Write for it at once and for my liberal free trial offer. Address Manson Campbell, President.

The Manson Campbell Company, Ltd., Chatham, Ont. Manson Campbell



201

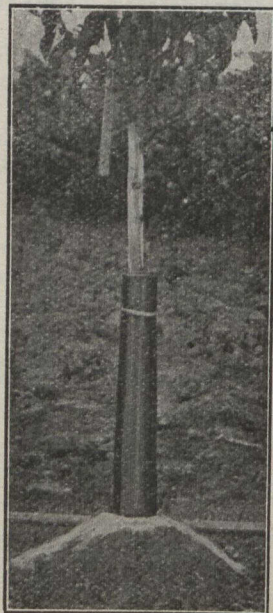
PROTECT YOUR TREES

Against Rabbits, Mice and other Vermin

Many young orchards are greatly injured each year by these pests. Wrap the trunks with

Wooden Veneers

and damage will be prevented. These veneers will protect also against sun-scald.



Tree Protected by Wooden Veneer and banked up with earth to prevent entrance of pests at bottom.

SEND AT ONCE TO

**THE OAKVILLE BASKET CO.
OAKVILLE, ONT.**

Landscape Work

In developing lawns and estates great care and judgment is required in the locating of walks and drives, the selecting of suitable varieties of trees and shrubs to be planted and the arranging of them artistically. Many homes lose their charm for lack of knowledge and experience in developing the grounds.

This difficulty is overcome by our Landscape Department, which is in charge of experienced men qualified to develop grounds of city or country homes, large estates, school and public grounds, parks, cemeteries or factory lands. Now is the time to discuss fall or spring work. Correspondence solicited.—Brown Bros. Co., Brown's Nurseries, Welland Co., Ont.

The Dominion Orchard Company

Prof. W. S. Blair, Macdonald College, Que.

About 30 miles from Montreal, on the sunny slopes of Rougemont, the Dominion Orchard Company is developing a property of about 300 acres, devoting the entire area to fruits and vegetables. The company is composed principally of Montrealers who have confidence in the capabilities of the province for producing certain fruits and vegetables to supply its own market, and in this they will not be disappointed.

The slopes of Rougemont, Abbotsford and St. Hilaire have long been known as ideal spots for the production of all classes of fruit of the highest quality, especially apples of the Fameuse type. Capt. R. W. Shepherd, one of the veteran fruit growers and a shipper of high class fruit to a special English trader, says that fruit from these sections cannot be excelled.

At the base of Rougemont are various plateaus of different elevations sheltered by mountain ridges. These are made up of soil well watered by streams from a lake situated on the top of the mountain. The soil is ideal in texture, being at fault in some cases only in excessive richness. On the slopes vegetation is rapid, and the intention is to supply early truck crops to the Montreal market in abundance. Some 50 acres of this land is already planted to small fruits, principally raspberries and strawberries, all of which are making good growth.

At the foot of the mountain is excellent vegetable land. On this, celery of the finest quality can be developed. It is the intention to grow 10 acres of this crop this year and ultimately to supply the Montreal market during the winter, doing away with the necessity of the large importations of this crop from California and elsewhere.

The greenhouses are of King construction and occupy one acre. In these, lettuce, radish, tomatoes, rhubarb and other vegetable crops are grown. They are located in a valley getting full benefit of the sun but well sheltered by surrounding hills. The returns from the houses last winter were so satisfactory that additional houses were erected this year, and no doubt the present plant will be increased as the business develops.

Large orchards of Fameuse and McIntosh Red, with cherries and plums in fillers, are being planted and considerable areas are now growing these fruits.

Knight Bros., of Mission City, B.C., shipped a crate of 12 baskets of strawberries to Vancouver, September 13th. These berries sold for \$6 for the half crate. This price was paid because the fruit was a curiosity. It cannot be supposed that a quantity would sell so well. If they did, then fall bearing strawberries might be made profitable.