

# men!

## Our Window

### Autumn

#### es?

your earliest. It interesting.

describe, is almost impossible foresight and early purchase complete display.

WEAR of every variety, and witnessed a smarter line. The refined tone for which our average look that it bears, and go elsewhere when seeking

them: 50c., 75c.,

Shapes, 25c. each.

a few

and you see only at 2.50.

uffer. Secure yours early,

Contains the

## Wool Display.

rows that

like the British Better!

Wool Goods in town? We are

10.50, \$12.00, \$15.00 per suit

WEAR, \$3.50 gar., \$7.00 per suit

arger All Wool Chest Protec-

ors \$2.50

arger Heavy All Wool Flannel

ight Shirts \$7.50

arger All Wool Socks, \$1.20, 1.50

ressing Gowns \$30.00

arger All Wool Smoking Jack-

ets \$15.00

arger All Wool Raincoats,

\$45.00

arger All Wool Top Shirts,

\$6.00, \$7.50

arger All Wool Vests \$10.00

arger All Wool Sweater Coats,

\$10.00

ations, concerning woollens,

en in England, until the War

ed before making your selec-

TRESS CAPS,

Which are unexcelled for a

and quality all their own.

Price: \$2.50, \$3.00

Walking Sticks,

Dents & Perrins' Gloves.

ERVICE IS UNBEATABLE

NO VALUE UNEQUALLED AT

Smith's

GEO. KEARNEY, Manager.

Protect your-  
self by buying  
here. Our Stores  
are well disinfect-  
ed every day.

## The Tide of Popular Patronage Flows Our Way

And the pleased enthusiasm of our patrons is the  
most far-reaching and most profitable  
of our advertisements.



### HOSIERY INDUCEMENTS

The prices actually shout their economy.

**WOMEN'S HIGH-GRADE WOOL CASHMERE**  
Hosiery—These are all British, made from selected wool only, in perfect fitting shapes. They are non-itchable and will prove most comfortable and stand a lot of wear. Regular \$1.50 pair. **Friday and Sat. \$1.60**

**WOMEN'S CASHMERE HOSIERY**—Good wearing quality of sturdy Cashmere, in plain or assorted ribs. Considered good value at so low a price as 45c. pair. **40c**

**WOMEN'S COTTON HOSIERY**—A close-fitting, elastic ribbed stocking that looks like real Cashmere. They fit perfectly and will always retain their jet black color. Sizes to fit up to 4 years; all long lengths. Reg. 25c. pair. **Friday and Saturday 26c**

### Notions & Drug Sundries.

Oxide of Zinc. Reg. 11c. for . . . 9c.  
Camphorated Ice. Reg. 15c. for . . . 13c.  
Petal Dust; a most effective moth destroyer. . . 20c.  
Absorbent Cotton. Reg. 15c. roll for . . . 13c.  
Sponges. Reg. 15c. each for . . . 13c.  
Colgate's Soap Pa ste. Reg. 25c. for . . . 21c.  
Blue Seal Vaseline. Reg. 9c. for . . . 8c.  
Carbolic Tooth Paste. Reg. 25c. for . . . 21c.  
Ironing Wax. Reg. 2c. each. Sale Price 4 for . . . 5c.  
Small tins of Vaseline. Reg. 17c. each for . . . 15c.  
Shaving Brushes. Reg. 17c. each for . . . 15c.  
Shaving Brushes. Reg. 22c. each for . . . 19c.  
Knitting Pins. Reg. 15c. set for . . . 13c.  
Nail Brushes. Reg. 10c. each for . . . 9c.  
Colored Cotton. Reg. 5c. reel for . . . 4c.  
Mending Wool. Reg. 8c. card for . . . 5c.  
Mending Silk. Reg. 8c. ball for . . . 7c.  
Mending Cotton. Reg. 5c. ball for . . . 4c.  
Small Manicure Sets. Reg. 20c. for . . . 16c.  
Clothes Brushes. Reg. 40c. each for . . . 35c.  
Polishing Cloths. Reg. 8c. each for . . . 7c.

### The Great Sale of BLOUSE FLANNELETTE REMNANTS

will receive fresh impetus Friday and Saturday.

If you have not as yet shared in the advantage of this great sale of Blouse Flannelette Remnants, don't despair—come to-morrow. The sale starts afresh with a renewal of the best values, and however high you may set your expectations, you'll find the assortments and values in this Remnant Sale higher still.

### Come and benefit by these GLOVE OFFERINGS.

**MEN'S WINTER-WEIGHT KID GLOVES**—In assorted Browns and Tans. Made with dome fastening wrist straps, stitched backs and heavy brushed wool lining. Really a high grade, serviceable glove that will last several seasons. Sizes 8 1/2 to 10 1/2. Regular \$5.00 a pair. **Friday and Saturday \$4.40**

**MEN'S WOL GLOVES**—In Brown, Grey and Green Heathers-mixtures. A perfect-fitting, durable glove with kid finished wrist and one dome fastener. All sizes. Regular \$2.20 pair. **Friday and Saturday \$1.90**

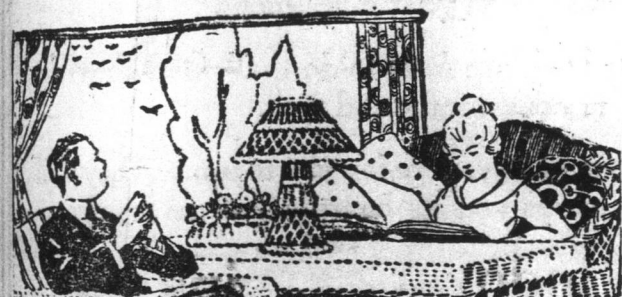
**WOMEN'S WOOL GLOVES**—Long, snug-fitting, ribbed wrists; well placed thumbs; perfectly seamless, like real hand-knit gloves. Colors: Chamade, Tan, Brown, Cream, Grey, Navy and Black. Regular \$1.40 pair. **Friday and Saturday \$1.25**

### Beautiful assortments of REMNANTS,

Values that will realize your highest expectations.

**WRAPPERETTE REMNANTS**—A wonderful variety of colors, designs and qualities to suit practically every fancy. These ends could be used for Kimonos, Dressing Gowns, Blouses and dozens of other uses. They are all mill ends and in most cases are perfect goods. It would pay you to come and pick out a few Friday and Saturday.

We have also a big lot of Khaki Flannelette, Chintz, Curtaining, Bed Ticking, Dress and Shirt Cotton Remnants. All are excellent qualities and considered the cream of value. We advise you to see these at once.



### Useful Opportunities For Careful Housekeepers.

**HAND-MADE SCRIM CURTAINS**—Of fine, soft, American material; well made and finished in every detail. Fine mercerized lace, hemstitched double edge. The wide open-work border displays at corners and sides beautiful hand-finished ornaments that will not only prove desirable but will undoubtedly give years of wear. White only. **\$4.65**

**LACE TRIMMED DRESSER SETS**—Heavy, serviceable qualities that will wash perfectly. Reg. 55c. set. **Friday 45c**

**DAMASK TABLE NAPKINS**—Old standards; unequalled for service and durability; size 21 x 30 inches. Reg. 25c. each. **Friday and Saturday 20c**

**DAMASK TABLE CLOTHS**—Beautiful qualities, woven in designs of Roses, Leaves, etc., with borders to match. Reg. \$2.50 each. **Friday and Saturday \$2.10**

**TURKISH TOWELING**—Plain White and Cream, 14 and 17 ins. wide. A good drying quality that will wear well and prove most satisfactory. Regular 28c. yard. **Friday and Saturday 26c**

**PILLOW FILLING**—Of old value, worth fully 50 per cent. more than the regular prices quoted here; assorted widths. Regular 15c. yard. **Friday and Saturday 12c**

Regular 20c. yard. **Friday and Saturday 16c**



### In Fashionable, New Furnishings For Men.

**MEN'S AMERICAN SAMPLE CAPS**—Here's a line of travellers' samples that for value and style cannot be beat. They were bought at a price to enable us to make this most extraordinary offer. Instead of \$1.50 each. **Friday and Saturday 88c**

**MEN'S DOUBLE SILK MUFFLERS**—Wide tubular style with silk fringed ends, knotted and plain. The colors include Grey and White stripes, Black and White with fancy scroll designs. Regular \$1.50 each. **Friday and Sat. \$1.25**

**MEN'S NEW WIDE END TIES**—Plain Silk Panama Repp in Emerald, Crimson, Brown, Navy, Royal and Grey; and a big assortment of fancy Light, Medium and Dark Silks just opened. All at Sale Prices. Reg. \$1.35 each. **\$1.20**

**MEN'S CELLULOSE COLLARS**—Dull and bright finishes. A popular double style, 1 1/2 inches wide; all sizes. Reg. 80c. each. **Friday and Saturday 26c**

**SHIRT FLANNEL MILITARY SHIRTS**—Of a smooth, even-finish material with two large breast pockets, divided into separate compartments for pen and cigarettes. Good roomy sizes in the regulation military style; extra superior qualities; all sizes. Regular \$3.25 each. **\$2.95**

**MEN'S WOOL UNDERWEAR**—The popular Terra Nova Underwear that wears so well, and is so comfortable within the reach of everybody's purse. Reg. \$2.10 garment. **Friday and Saturday \$1.90**

**MEN'S VICI KID BLUCHER BOOTS**—A popular shape with rubber heel, self tip, wide, comfortable fitting block toe and reliable soles of solid leather. An easy fitting, hard-wearing boot that gives you real value for the money. Reg. \$6.00 pair. **Friday and Saturday \$5.60**

### VALUES That Will Arouse Enthusiasm in the SHOWROOM.

Those desirous of securing bargains cannot well afford to miss these opportunities. Selling will be exceptionally sharp and active throughout the day, and an early purchase will be of decided advantage.

**WOMEN'S VELVET HATS**—Our hat values and assortments are bringing hundreds of good dressers here every week. The line we offer for Friday and Saturday is too varied for details. Come and see them. Regular \$3.25 each. **Friday and Saturday \$2.80**

**NAVY CLOTH FALL AND WINTER SKIRTS**—An extra fine quality of close, firm cloth, plain tailored style, welded seams. A regular old-time value. Reg. \$4.20 each. **Friday and Saturday \$3.70**

**FANCY MUSLIN BLOUSES**—With fancy and White Vestee fronts and collars. Various styles, some are trimmed with groups of small buttons. Regular and set-in sleeves. Reg. \$2.75 ea. **Friday and Saturday \$2.30**

**WOMEN'S CORSETS**—Very shapely and perfect fitting corsets in three different styles. Fashioned from fine quality White Corset; 4 excellent quality hose supports. Regular \$2.40 pair. **Friday and Saturday \$2.10**

**FUR HAT BANDS**—Animals in natural color and shape, to be worn across the front of hat. Especially low priced for Friday and Saturday. **16c**

**SEQUIN TRIMMING**—The latest style idea for hat bands and crowns, 6 inches wide. Regular 60c. yard. **Friday and Saturday 50c**

**EVER-POPULAR SHANTUNG SILK**—The Silk you can use for almost any purpose, natural color only, 32 inches wide. Regular 95c. yard. **Friday and Sat. 80c**

**PALETTE SILK**—Possessing an extra fine weave and soft lustrous finish. A high-grade desirable Silk for party and special occasion dresses. A broad color range; 36 inches wide. Reg. \$3.50 yard. **Friday and Saturday \$3.10**

### Women's Black FURS.

Large Black Fox shaped Furs of excellent quality black skin with head, paws and tail as trimmings. The large pillow shaped Muff is lined with fine black satin. Sold separate or by the set.

The neck piece sells regularly at \$8.50. **\$7.50**

The Muff sells regularly at \$9.75. **\$8.00**

**CHILDREN'S WHITE BEAR SETS**—To fit from 2 to 6 years. Made with silk for one end to pass through and fit comfortably about the neck. The Muff is in a most serviceable shape with stout silk neck cord. The price for this Sale on a limited quantity only will be much less than one would usually buy them for. Reg. \$2.25 set. **Friday & Saturday \$1.80**

### Women's Sweaters

**WOMEN'S HEAVY WOOL SWEATER COATS**—Here's a smart looking up-to-date coat that for service and comfort cannot be equalled to-day at anything like the price quoted here. It comes in Rose only in an extra heavy knit. The collar is of cream brushed wool. The belt front and pocket tops are knit in a fancy stitch while the cuffs are double and snugly fit the wrist. Regular \$5.25. **Friday and Saturday \$4.60**



**HAT BANDINGS**—Corded Silk, Taffeta and embossed velvet in various pretty designs and color blendings; styles to suit any Fall or Winter Hat; all two inches wide. Reg. 25c. yard. **Friday and Saturday 21c**

**FUR TRIMMING ORNAMENTS**—On Silk Cord. Novelties for trimming Costumes, Coats, Fur Neckwear, etc.; mole and fawn only. Regular 70c. each. **Friday and Saturday 58c**

**WOMEN'S SMART, DRESSY COLLARS**—In Black and White Nylon, Navy spotted and White Jap Silk, and an endless variety beautiful White Muslin and Voile, in styles for dress or coat. This lot should prove big made winners for us. Regular 55c. each. **Friday and Saturday 46c**

**WOMEN'S FLANNELETTE KIMONOS**—23 only of these serviceable garments, in Saxe, Pale Blue, Hello, Pink and Navy styles. Fashioned from fine quality White Flannelette, made in Japanese style with belt of self-material. The short sleeves and collarless neck are finished with one inch Satin edging. Regular 55c. each. **Friday and Saturday 46c**

**NEW SKIRTS**—Of fine quality, all-wool serge in Black and Navy Blue. They are right from their manufacturers and represent the very latest styles. They are shirred back, fancy button-closing pockets, high waist, welded seams. They are finished at bottom and can be easily stitched to any length required. Regular \$8.00 each. **Friday and Sat. \$7.00**

**BUSINESS GIRLS' BLACK SATEN AP- RONS**—A style with circular back and front that almost completely covers the skirt. Just the apron for shop girls, sewing circles, knitting days, etc., made with one pocket. Regular 90c. each. **Friday and Saturday 75c**

An interesting offering that no woman requiring furs should miss.

**WOMEN'S WRAPPERETTE DRESSING GOWNS**—In several most desirable styles. Some with shirred elastic waist, sailor collar, ribbon trimmed collar, front and cuffs. All of fairly stout materials in scroll designs. Colors: Hello, Blue, Pink and Grey. Reg. \$3.25 ea. **Friday & Saturday \$2.80**

**GIRLS' WOOL TOQUES**—Medium weight single and heavy double Wool Caps in plain Rose, Saxe, Khaki and Brown; also two color effects of Corn and Navy, Grey and Saxe, Grey and Maroon, Greys, Browns, etc. All serviceable Caps, trimmed with mercerized and wool pom-poms. Reg. 75c. each. **Friday 65c**

**Shown in all the newest styles and shades for Fall and Winter wear. You may search far and wide—but in vain—to get values like these.**

**WOMEN'S BRUSHED WOOL SWEATER COATS**—Of an extra light weight possessing that much desired "warmth without weight" quality. They come in rich shades of corn with heavy sailor collar in Cream. Also plain red sweater coats with long lapel extending to the bottom of coat. The belt, pockets and cuffs are in self-color. Reg. \$9.00 ea. **Friday & Sat. \$7.80**

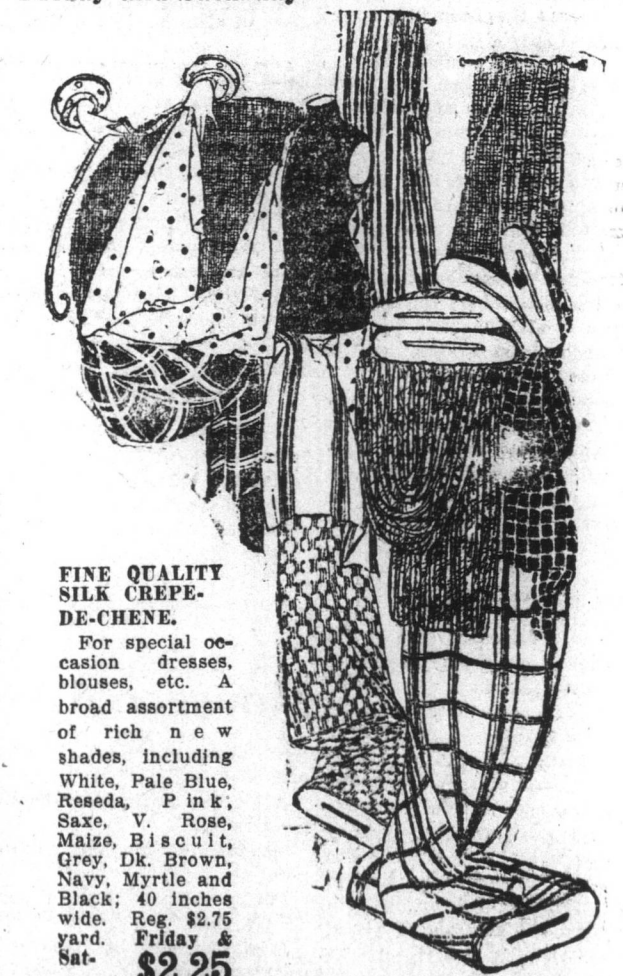


## The Royal Stores Ltd.

### The Fall atmosphere pervades the Velvet and Blouse Goods Sections

where most satisfactory lines of New Fall Velvets, Velvetens, Corduroys, Wrapperettes and Blouse materials are being displayed.

From among the many we have selected for Friday and Saturday



**FINE QUALITY SILK CREPE-DE-CHENE**—For special occasion dresses, blouses, etc. A broad assortment of rich new shades, including White, Pale Blue, Roseda, P. Ink, Saxe, V. Rose, Maize, Biscuit, Grey, Dk. Brown, Navy, Myrtle and Black; 40 inches wide. Reg. \$2.75 yard. **Friday and Sat. \$2.25**

**CORDED VELVETEEN**—Of a most serviceable quality for Women's Costumes. The soft silky finish, medium width cord and smart rich colors make this material especially desirable for women's wear. Reg. \$2.20 yard. **Friday and Saturday \$1.85**

**COSTUME VELVETEEN**—With a rich, silk finish. This material is so closely woven and well made that it could be used for millinery purposes instead of silk velvet. In all the new shades; 22 inches wide. Reg. \$1.65 yard. **Friday and Saturday \$1.60**

**HEAVY WOOL BLANKET COATING**—In wide bars and rich dark plaids; an extra heavy weight, classy material; 56 inches wide. Regular \$6.75 yard. **Friday and Saturday \$6.10**

**SKINNER'S SATIN**—The original Skinner's Satin with the name on the selvege. Ideal coat lining; guaranteed for two seasons, but will wear considerably longer; 36 inches wide. Brown. Regular \$2.80 yard. **Friday and Saturday \$2.40**

**Black**. Regular \$2.50 yard. **Friday and Saturday \$2.10**

**Extra Values from the  
Quilt and Blanket Section.**

**WADDLED QUILTS**—Covered with heavy cotton in assorted patterns. The filling used is made from all new cotton and is perfectly sanitary in every way; size 60 x 72 inches. Reg. \$4.50 each. **Friday & Saturday \$4.15**

**WADDLED QUILTS AGAIN**—This time of a slightly better grade, with covering of stout cotton and sanitary cotton filling; size 60 x 72 inches. Regular \$4.95 each. **Friday and Saturday \$4.45**

**FAISLEY QUILT COTTON**—Extra quality soft Paisleys in 4 different designs. These are absolutely pure, without filling of any kind; extra wide, being 38 inches. Reg. 40c. yard. **Friday and Saturday 36c**

**COTTON BLANKETS**—Heavy fleecy made with Pink or Blue striped ends and strongly over-stitched edge; size 50 x 72 inches. Reg. \$3.50 pt. **Friday & Sat. \$3.18**