

**"ST. AUGUSTINE"**  
REGISTERED

**The Perfect Communion Wine**

In use in hundreds of churches in Great Britain, West Indies, The United States, & etc.

Cases 12 Qts. \$4.50; 24 Pts. \$5.50 F.O.B. Brantford.

**J. S. Hamilton & Co. Brantford ONTARIO.**

Manfrs. and Proprs. "St. Augustine Wine"

Telephone - - Main 7405

We are equipped to produce Printing Matter that will attract attention anywhere. Our prices are inducing and should attract the shrewd business man—try us.

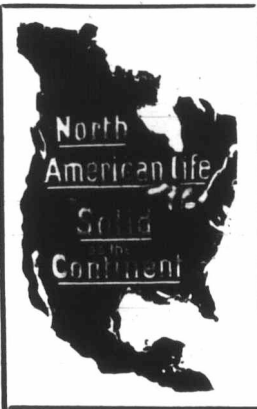
**The Monetary Times Printing Co., of Canada, Limited**

62 Church St., Toronto, N.-W. Cor. of Court St.



**CHURCH AND MEMORIAL WINDOWS**

STAINED GLASS  
Designs and estimates submitted  
**LUXFER PRISM COMPANY LIMITED**  
100 King St. West Toronto



**The North American Life**

Extends to one and all

**Hearty wishes for a Bright and Prosperous New Year.**



**NORTH AMERICAN LIFE**

Assurance Company

"Solid as the Continent"

Home Office, Toronto

**A Physician's Testimony for Labatt's Ale**

"We find that the ale uniformly and well agreed with the patients, that it stimulated the appetite, and thereby increased nutrition. The taste, likewise, is always highly spoken of. In nervous women, we found that a glass at bedtime acted as a very effective and harmless hypnotic."—SUPERINTENDENT OF LARGE U. S. HOSPITAL.

**P. BURNS & CO.**

WHOLESALE AND RETAIL DEALERS IN

**COAL AND WOOD**

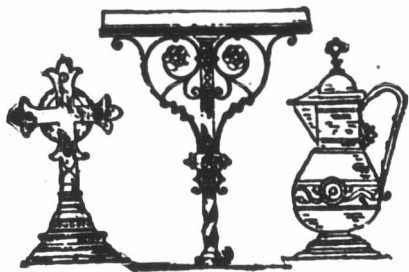
HEAD OFFICE: 49 King Street East, Toronto  
ESTABLISHED 1856. TELEPHONE 181 AND 182

Office and Yard, FRONT ST. near BATHURST. Telephone No. 449 and 2110  
Office and Yard, PRINCESS STREET DOCK. Telephone No. 190

**DANIEL STONE**

UNDERTAKER

82 West Bloor St. Telephone North 36



**EAGLE AND RAIL LECTERNS**

Altar Rails, Crosses, Vases, Desks, etc., Candlesticks, Vesper Lights, Memorial Brasses, Chandeliers, and Gas Fixtures, Communion Services, made or refinished. Electrical Contractors

**CHADWICK BROS.**

Show Room 19<sup>1/2</sup> East King St. Hamilton  
Factory, Oak Avenue, near Barton St. Send for Catalogue

**ALEX. MILLARD**

Undertaker and Embalmer

359 Yonge Street, TORONTO  
Telephone Main 679



CHURCH BRASS WORK of every description made to order on shortest notice. Designs furnished and satisfaction guaranteed.

**KEITH & FITZSIMONS, LIMITED**  
111 King Street West, Toronto

**BELLS.**

Steel Alloy Church and School Bells. Send for Catalogue The C. S. BELL CO., Hillsboro, O.

**THE TORONTO UNIVERSITY CONCERT.**

Mr. A. L. E. Davies, the conductor, is highly pleased with the progress being made at rehearsals by the members of the University of Toronto Glee Club in preparation for the Annual Concert to be held in Convocation Hall on Thursday evening, January 26th. He is particularly gratified at the large attendance and

the diligence displayed. He has rarely, if ever, heard better voices than there are in the hundred and twenty-five which he has at his command. With the assistance of the Toronto String Quartette, everybody is looking forward to one of the most successful concerts the Glee Club has yet held. The subscription lists, which are open at the leading music stores, will close Saturday, January 14, and the subscribers' plan will open at Nordheimer's, 15 King St. E., Friday, January 20th.

**The Testimony of Science to the Credibility of the Book of Jonah**

A VINDICATION OF THE NARRATIVE OF HIS ADVENTURE WITH THE WHALE

By  
Rev. J. W. BEAUMONT,  
D.D., M.D.

In Pamphlet Form,  
Price Five Cents.

Canadian Churchman Office  
36 Toronto Street, Toronto, Ont.

**MENEELY BELL CO**  
TROY, N.Y. AND 177 BROADWAY, N.Y. CITY  
**BELLS**

**LAND FOR THE SETTLER**

160 acres of land, convenient to Railways in Northern Ontario's great Clay Belt for each settler. The soil is rich and productive and covered with valuable timber. For full information as to terms of sale, homestead regulations, and special colonization rates to settlers write to

DONALD SUTHERLAND,  
DIRECTOR OF COLONIZATION,  
TORONTO, ONTARIO.  
HON. JAS. S. DUFF,  
MINISTER OF AGRICULTURE,  
TORONTO, ONTARIO

**SEVERAL NEW FEATURES**

will be included in all policies issued after the beginning of 1911 by The Great-West Life Assurance Company.

Not the least of these is the Total Disability Clause—making a provision for the insured in the event of his becoming totally incapacitated. Premiums remain just as low as ever, and we anticipate that the same high profit returns will mature to policyholders in future as have earned for The Great-West Life their enviable reputation. If you are interested in this new special addition and would like to get fullest possible information, write NOW—stating age—to

**The GREAT-WEST LIFE ASSURANCE COMPANY**  
HEAD OFFICE, - WINNIPEG

**Down Quilts**

All sizes from the large double bed to the smallest cradle, covered with Silk or Sateen in daintiest designs and colors, sometimes combining plain color and fancy design, very often all fancy design; and also all plain color in one or two colors. Old quilts are also made over and renovated when required or made up to match the drapings of a room

Your enquiries solicited and quotations furnished

**JOHN CATTO & SON**  
55-61 King Street East, TORONTO

**CHURCH FURNITURE**

Catalogue of Pews, and Chancel Furniture, mailed free upon request  
The Blonde Lumber & Mfg. Co. Limited  
Chatham, Ont.

**MENEELY & CO. WATERVLIET, (West Troy), N.Y.**  
The Old Reliable Meneely Foundry, Established nearly 100 years ago  
CHURCH, CHIME, SCHOOL & OTHER **BELLS**



**The Canadian Churchman is undoubtedly a first-class advertising medium. It circulates extensively in the homes of the clergy and laity. Our advertisers assure us that it is an excellent paper to advertise in as it brings most satisfactory returns.**

TORONTO, T

Subscription

NOTICE.—Subsc Toronto owing to th ADVANCE, \$1.50.

ADVERTISING B

ADVERTISING.—Th medium for adverti Church Journal in t BIRTHS, MARRIAG Deaths, etc., two c THE PAPER FOR a Family Paper de Canada, and shoul CHANGE OF ADDR not only the Post-C also the one to whi DISCONTINUANCES received, it will be tinue the paper m dollars per annum RECEIPTS.—The l tion is paid, no wri postage stamp mu or four weeks to m CHEQUES.—On c fifteen cents.

POSTAL NOTES.— CORRESPONDENTS of the CANADIAN C than Friday morni Address all commu

Phone Main 4 Offices—Union E NOTICE.—Sub states, \$2.00 pr

SIN

Lessons

January 8 Morning—1 Evening—1

January 1 Morning—1 Evening—1

January 2 Morning—1 Evening—1

January 3 Morning—1 Evening—1

January 4 Morning—1 Evening—1

January 5 Morning—1 Evening—1

January 6 Morning—1 Evening—1

January 7 Morning—1 Evening—1

January 8 Morning—1 Evening—1

January 9 Morning—1 Evening—1

January 10 Morning—1 Evening—1

January 11 Morning—1 Evening—1

January 12 Morning—1 Evening—1

January 13 Morning—1 Evening—1

January 14 Morning—1 Evening—1

January 15 Morning—1 Evening—1

January 16 Morning—1 Evening—1

January 17 Morning—1 Evening—1

January 18 Morning—1 Evening—1

January 19 Morning—1 Evening—1

January 20 Morning—1 Evening—1