

Black Watch

Black Plug
The Chewing Tobacco
of Quality.



2271

HANDLED BY ALL
THE
WHOLESALE TRADE

THE MARKETS.

Montreal, June 18th, 1908.

Butter.—The market for butter has advanced as high as 23½c. being paid at country points; this means 23½c. here. Some of the stock purchased early last week might be had at 23c. These figures are above an export basis.

Cheese.—The market in the country has been boomed still further and Quebec makes cannot now be purchased here under 11½ to 11¾c., while Ontarios range from 11½ to 11¾c. Townships cannot be had at less than Ontarios.

Hides.—The market is dull and unchanged. Dealers are paying 11c. per lb. for No. 2 calfskins, and 13c. for No. 1; beef hides being 5, 6, and 7c. according to quality. Spring lamb skins are costing 10c. each, sheep skins being 75 to 80c. each. Horse hides are \$1.50 to \$2

each. Tallow is 1c. to 3c. for rough and 5 to 5½ for rendered.

* * *

Toronto, June 18th.

Fruit.—Trade is very brisk. The California fruit season opened on Monday, when the first car of apricots and plums were sold. We quote: California oranges, \$4.50 to \$4.90 box; Canadian strawberries, 12c. box; Texas tomatoes, \$1.25 crate; watermelons, 50c. each; pineapples, \$2.85 to \$3.50 crate; bananas, \$1.35 to \$2 bunch; lemons, \$3 box. California fruit-apricots, \$2.50 to \$2.75; plums, \$2.25 to \$2.50; peaches, \$1.75; cherries, \$2.50; grape fruit, Bahamas, \$2 box; Floridas, \$4 and \$5 box.

Fish.—Demand is greater than the supply. Sea salmon is selling at 18c. per pound and the demand is very heavy. Mackerel, 13c., selling very freely. Large consignments are being made of white fish; price, 10c. pound. Halibut, 10c.; cod, 8c.; trout, 9c.; lobsters, 18c. pound; lake herrings, \$3.

CANADIAN OFFICE & SCHOOL FURNITURE CO. LIMITED
PRESTON, ONT.

OFFICE, SCHOOL, CHURCH, & LODGE FURNITURE
FINE BANK, OFFICE, COURT HOUSE AND DRUG STORE FITTINGS
A SPECIALTY

SEND FOR CATALOGUE

ATLAS ASSURANCE CO.,

Limited

OF LONDON, ENGLAND

Subscribed Capital - - \$11,000,000

Total Security for Policyholders amounts to Twenty-four Million Dollars. Claims paid exceed One Hundred and Thirty Million Dollars.

The Company's guiding principles have ever been Caution and Liberality. Conservative selection of the risks accepted and Liberal treatment when they burn.

AGENTS—i.e., Real Agents who Work—wanted in unrepresented districts

North-West Department:

R. W. DOUGLAS, Local Manager, 341 Main Street, Winnipeg.

Toronto Department:

SMITH & MACKENZIE, General Agents, 24 Toronto Street, Toronto.

Head Office for Canada—MONTREAL

MATTHEW C. HINSHAW,
Branch Manager.

Provisions.—The market remains unchanged. Butter is much firmer and supplies are taken up for packing as fast as the produce is made. This is the cause of the extremely high prices. Receipts of eggs have fallen off considerably. Hens have finished laying about two or three weeks earlier than usual. This means that supplies of eggs will be very much shorter next winter, as not more than two-thirds of the amount put away last year is now being stored. On the other hand, the United States money market is low and the receipts of eggs have been fairly firm. There will, therefore, probably be a big importation in the winter. Prices: Creamery prints, 23 to 24c.; dairy prints, 20 to 21c.; dairy solids, 19 to 20c.; eggs, 18c.; lard, pails, 12½c.; tubs, 12c.

THE EXCELSIOR LIFE INSURANCE CO.

Head Office: 59-61 Victoria St., Toronto
Established 1889

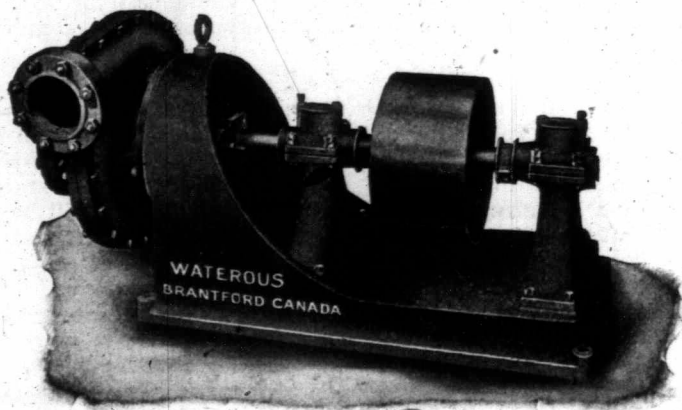
Insurance in force - - \$11,322,477.70
Assets - - - - - 1,411,330.38

A Company possessing features particularly attractive to insurers and agents.
No better Company to insure in. No better Company to represent.

E. MARSHALL, D. FASKEN,
Gen'l Manager President

The PUMP For PAPER and PULP MILLS

We Manufacture a full line of
PULP MILL MACHINERY



WRITE FOR SPECIAL CATALOGS

The Waterous Engine Works Co., Ltd.
BRANTFORD, CANADA

Original Charter 1854

THE Home Bank of Canada

HEAD OFFICE **TORONTO** 8 KING WEST

Branch Offices in Toronto

78 Church Street
Cor. Queen West and Bathurst Streets
Cor. Bloor West and Bathurst Streets
Cor. Queen East and Ontario Streets

West Toronto City, or Toronto Junction
20 Dundas Street West

Branch Offices in Ontario

London St. Thomas
Walkerville Cannington
Alliston Sandwich
Ilderton Thorndale
Melbourne Belle River
Tecumseh Everett

Winnipeg, Man. Lawrence Station Fernie, B.C.

James Mason, General Manager