



**FOR SALE**  
 "TAMCO" Crushed Stone in all sizes, for all purposes. "Roman" building stone. "Milton" pressed bricks. Sanitary flooring, stone crushers, fire engines, &c.  
**T. A. MORRISON & CO.**  
 204 St. James Street, Tel. Main 4532. Montreal.

**RAILS** For Contractors, Switches, Girders, &c.  
 New and Second Hand.

**LOCOMOTIVES AND CARS**

**John J. Gartshore**

85 Front St. West,  
 Opposite Queen's Hotel.) **TORONTO**

**SACKETT PLASTER BOARDS**

Great time saver. Fire and sound proof. Cheaper than wooden and metal lath construction. In stock at Montreal and Toronto. Address

**PERCIVAL W. ST. GEORGE,**  
 85 St. Francois Xavier St. Montreal

**R. B. H. BUCKNER,** Ontario Lime Association, Toronto.

**JAS. J. MURPHY,** 85 St. Peter Street, Quebec.

TELEPHONE MAIN 6805

**THE ROOFERS SUPPLY CO., LIMITED**

DEALERS IN  
 SHEET METALS, ROOFING MATERIALS, ROOFERS' SUPPLIES, ROOFING SLATE

Bay and Lake Sts., Toronto, Canada

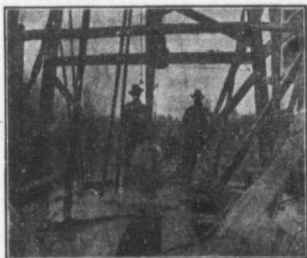
**HERRINGBONE LATH**  
 MANUFACTURED BY  
 THE METAL  
**SHINGLE & SIDING CO., LIMITED**  
 MAKERS OF FIREPROOF BUILDING GOODS  
 PRESTON & MONTREAL

**J. HARVEY**

**CONTRACTOR**  
 GREENVILLE, ONT.

Driller of Oil, Gas, Salt or Artesian Wells. Deep Wells a Specialty.

20 YEARS' EXPERIENCE IN CANADIAN OIL FIELD



Contracts taken in any part of Canada. Several years' experience in Artesian Wells for Municipal Water Works. Estimates or geological information cheerfully furnished  
**REFERENCES GIVEN**

Contractors to H.M. Governments

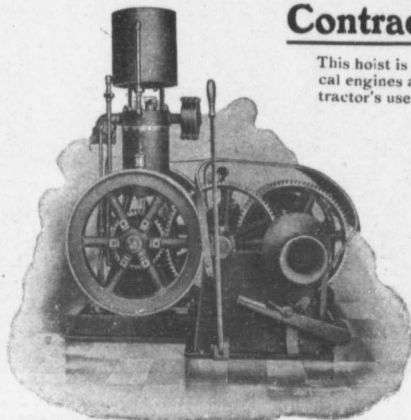
**ALLAN, WHYTE & CO.**

Clyde Patent Wire Rope Works, Rutherglen, Glasgow, Scotland

**WIRE ROPES** for Cableways, Aerial Ropeways, Elevators, Cranes, Derricks, Pile Driving, Drilling, etc

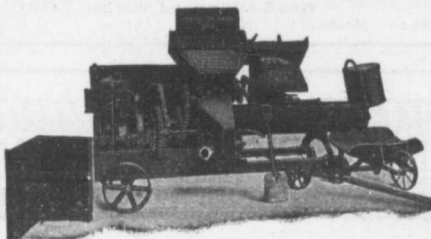
Large stocks carried by **DRUMMOND, McCALL & CO.,**  
**MONTREAL AND TORONTO**

**Contractor's Hoist**



This hoist is designed for use with our vertical engines and is intended for general contractor's use where a double platform elevator is employed, one platform descending as the other ascends. It is equipped with winch head on one side which can be used for elevating beams or other material that cannot be taken up on regular elevator. The drum sheave over which the elevator cable runs is placed on the other side of hoist. This sheave and the winch head are interchangeable so that they can be placed on either side desired. Can be operated by steam, gasoline or electric power.

**EUREKA SUPREMAY** IT IS SELF-EVIDENT



Furnished with Steam, Gasoline or Electric Power.

The Eureka Concrete Mixer is adaptable to all kinds and classes of work. Easily moved and ready for work instantly when on the job. The measuring is automatic and guaranteed accurate and reliable.

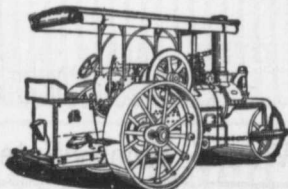
THIRTY-SEVEN plow-shaped blades in an open mixing trough mix the material thoroughly, first dry, then wet.

In justice to yourself, it will pay you to know more about Eureka mixing. We have some astonishing evidence of Eureka superiority. Ask for it

FOR CATALOGUE AND PRICES OF THE ABOVE WRITE

**GLIMAX ROAD MACHINE CO.** 37 James South  
 HAMILTON - CANADA

**"WATEROUS"**  
**ROAD MACHINERY AND**  
**FIRE APPARATUS**



**FIRE ENGINES** in five sizes, with a full line of fire-fighting goods.

We Rebuild other makes of Fire Engines with our patent Boiler.

**BRANTFORD PITTS DOUBLE ENGINE STEAM ROAD ROLLER**

IN THREE SIZES—10, 12 and 16 ton.

CORRESPONDENCE SOLICITED.

**HUGH CAMERON & CO.,** Selling Agents 72 Queen St. West, Manning Chambers, **TORONTO**