

Issued Each Week—Only One Dollar A Year

VOL. XXXI.

NUMBER 44

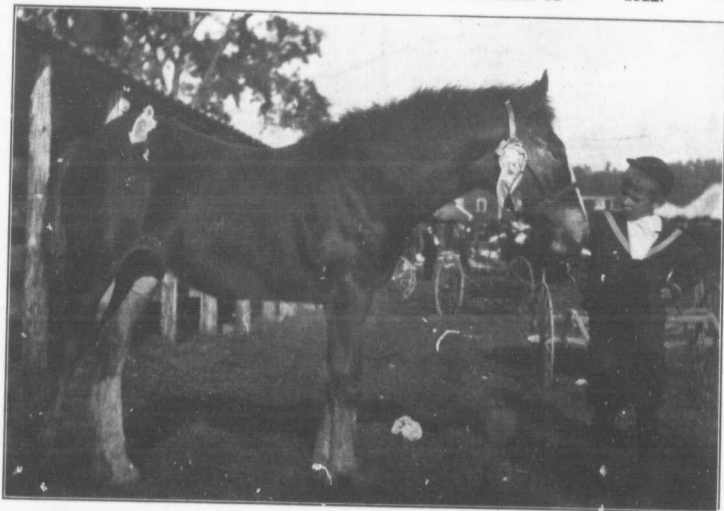
# FARM AND DAIRY

## RURAL HOME

PETERBORO, ONT.

OCTOBER 31

1912.



THIS COLT HAS THE POINTS THAT WILL MAKE HIM A MARKET TOPPER  
Big, strong bodied colts, yet of good quality, the kind that grow into horses weighing 1,600 to 2,000 lbs. each, are the kind that make market toppers. On the Toronto Horse Exchanges last week draft horses of the kind that the colt here illustrated will develop into, sold at \$250 to \$325. General purpose horses, the kind found so commonly on Canadian farms, sold for \$150 to \$220, most of them going at the lower figure. Heavy horses are the most profitable kind to raise, too. A brood mare or two of good draft breeding is a valuable asset on any farm. A crop of colts such as the one shown herewith, renders sure dividends.

DEVOTED TO  
**BETTER FARMING AND**  
CANADIAN COUNTRY LIFE

OTAWA  
Trade Division  
March 12