



ENGINEER SANTA



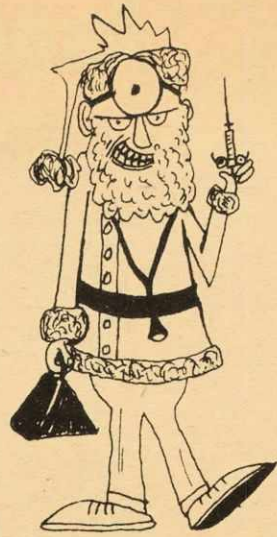
ARTSMAN SANTA



LAWYER SANTA



COMMERCE SANTA



MEDICAL SANTA

1964

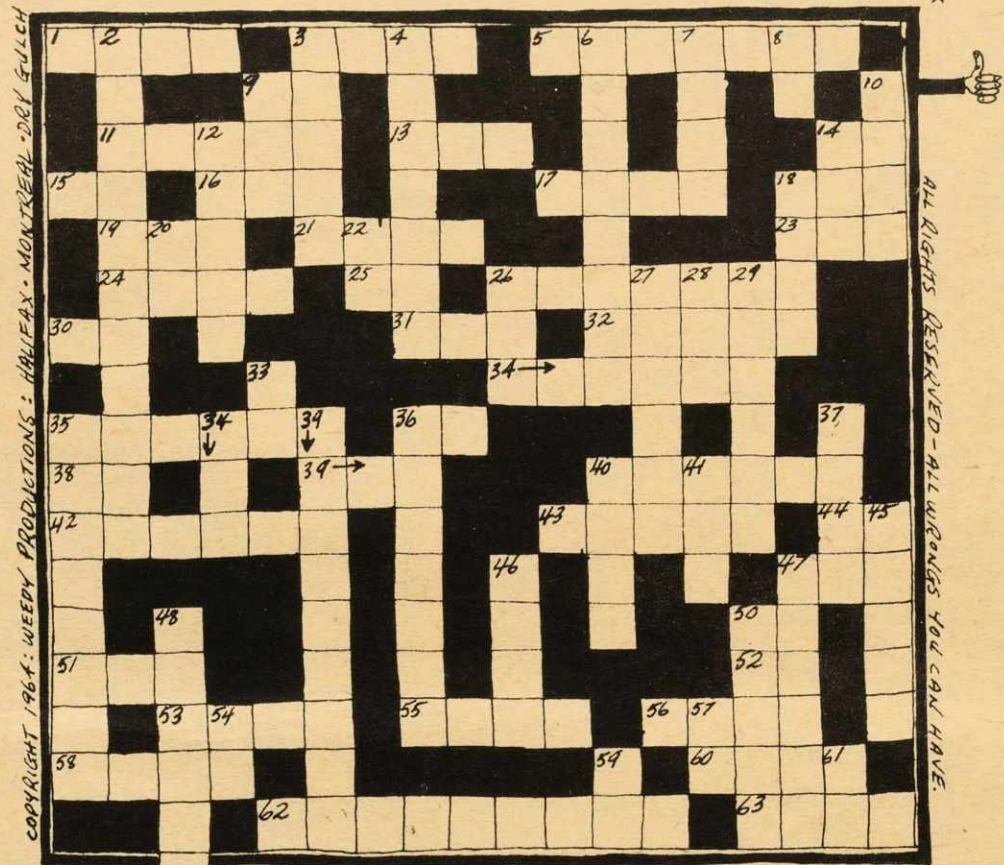
Dear Santa,
 How are you Santa? I hope everything is fine at the North Pole. Some of my friends do not believe in you Santa, but I do. I have believed in you ever since I can remember. I have been a good boy all year. Some other people will tell you that I am not good but don't you believe them. They don't like me because I won't give them the things they want. They are greedy Santa. I am not greedy. I am good. All I want for Christmas is a big desk like my friend has, and more money. If you do not bring me these things I will fix you good, because I have the power.
 Love, Peter Herrndorf.

Dear Mr. Claus,
 Sensing the fact that your time, due to the approaching festive season, is somewhat valuable, I will not undertake to waste it with onerous words.
 My associates have hereby designated me to inform you of their Christmas necessities. All desire one and the same item: a new house. Our present establishment is excruciatingly small.
 Yours truly,
 Pericles R. McCopus
 for Dalhousie Lawyers.

P.S. May I also inform you, sir, that photographs, definitely detrimental to your existing image, have been taken of your lengthy stop-over in a certain apartment Christmas Eve last. Unless our explicit needs are fulfilled this Christmas, procedure will be commenced concerning said photographs.

Dear Fat-Boy;
 We need stuff for Christmas and lots of it so let's get on the ball and come across with the goods, huh Fats? We need more booze and beer. We want more broads too so bring us more broads.
 I don't give a damn what anybody says we have all been good.
 Yours sincerely sincerely fondly
 Dal Engineers.

WEEDY'S CHRISTMAS CROSSWORD!



COPYRIGHT 1964: WEEDY PRODUCTIONS: HALIFAX, MONTEREAL, DEL GULCH

ALL RIGHTS RESERVED - ALL WORDS YOU CAN HAVE.

ACROSS

- 1. SANTA CLAUS IS A _____!
- 2. PETER HERRNDORF IS _____!
- 3. 80% OF THE GIRLS IN SHIRREFF HALL ARE _____!
- 7. _____ AND PA HERRNDORF.
- 11. MICHEL GUIE'S TOE WAS STEPPED ON BY A _____!
- 13. WHAT THE DAL TIGERS DID ONLY TWICE THIS YEAR.
- 14. _____ GAMMA PHI.
- 15. FEE, FI, _____, FUM
- 16. _____ OR NOTHING.
- 17. IF ONE WISHED TO BUY OUT SANTA'S MONOPOLY, HE COULD DO SO WITH A STUDENT _____!
- 18. _____ TAKES THE WORRY OUT OF BEING CLOSE TO HERRNDORF.
- 19. IF SANTA DIED, IT WOULD _____ CHRISTMAS.
- 21. FAMOUS, WELL-TIMED PHRASE FROM SHIRREFF HALL, "WATCH YOUR _____, BUB."
- 23. _____ TO A GRECIAN URN.
- 24. "LET'S _____!" (ONLY 20% SAY THIS)
- 25. "WATCH IT, _____ ELSE!" (2nd WARNING)
- 26. WHEN SANTA WAS STOOD UP BY THE SWEET YOUNG THING IN APT. # 302, HE WAS (COMMONLY SAID) _____!
- 30. YOU AND ME.
- 31. FINK UNIVERSITY WHERE SANTA WILL NOT GO.
- 32. WHEN THE OWL MARRIED THE GOAT THEY HAD A HOOT _____!
- 34. WHEN SANTA GOES TO AN ENGINEER'S HOUSE, HE ALWAYS TAKES HIS _____!
- 35. _____ COVE.
- 36. SOMETHING WHICH SANTA AND HERRNDORF HAVE IN COMMON.
- 38. REGISTERED NURSE (ABBR.)
- 39. LADY WHO RUNS HOUSE OFF ILL-REPUTE IN HALIFAX, ALSO, GOOD FRIEND OF HERRNDORF.
- 40. WHAT SANTA STARTED OUT AS.
- 42. SANTA AND HERRNDORF HAVE THAT _____ LOOK!
- 43. WHAT EVERYONE SHOULD FEEL ON CHRISTMAS.
- 44. WHAT POOR OLD SANTA SAID WHEN MEAN OLD HERRNDORF KICKED HIM.
- 47. CIGARETTE _____!
- 50. QUIGLEY LAKANDOOKY'S INITIALS.
- 51. HERRNDORF IS FULL OF HOT _____!
- 52. OPPOSITE OF "DOWN" THE CHIMNEY.
- 53. VALUABLE STONE.
- 55. 'T WAS THE NIGHT BEFORE CHRISTMAS AND SANTA CLAUS _____!
- 56. _____ POWDER (WHAT SANTA PUTS IN HIS BEARD)
- 58. WHAT RHYMES WITH "BUILT."
- 60. WHAT SANTA SAYS WHEN HE COMES DOWN THE CHIMNEY AND SEES HERRNDORF.
- 62. CANTEN COFFEE IS GREAT FOR CLEANING _____!
- 63. WHAT SANTA WAS BOOKED FOR ON CHRISTMAS, 1958.

WIN A DATE WITH PETER "THE GRAPPLER" HERRNDORF!! SUBMIT THIS CROSSWORD PUZZLE INTO THE GAZETTE OFFICE BEFORE DEC. 10/64.

[DOWN - continued]

- 20. ALCOHOLICS ANONYMOUS (ABBR.)
- 45. HOW DOES SANTA MAKE HIS REINDEER GO FAST, FAST, FAST? HE _____ THEM!
- 46. WHAT PART OF SANTA DOES ONE SIT ON?
- 47. GENUINE _____ WOOL.
- 48. HERRNDORF LIKES TO _____ IN THE SNOW WITH SHIRREFF HALL GIRLS.
- 50. SOME PEOPLE SAY SANTA AND HERRNDORF _____ ARE _____ ARE _____!
- 54. _____ BOAT.
- 58. LEFTY YONKER'S "INITIALS."
- 59. TO _____ OR NOT TO _____!
- 61. PETER HERRNDORF'S "INITIALS" BACKWARDS.
- 2. QUITE SAYS BUNTAIN IS _____!
- 3. ENGINEERS' _____ ARE GREAT FUN!
- 4. GOONS WHO CONTROL COUNCIL.
- 6. BUNTAIN SAYS QUITE IS _____!
- 7. ANOTHER WORD FOR LAWYER.
- 8. WHAT SHIRREFF HALL GIRLS SAY 80% OF THE TIME.
- 9. PEL - _____!
- 10. "I LOVE YOU" IS A TERRIFIC _____!
- 12. IF A BOY GETS A GIRL IN TROUBLE HE SHOULD _____ HER. YES NO
- 14. IF SANTA WAS A BEAKNIT, HE WOULD LIVE IN A _____!
- 18. MOST GIRLS ARE ONLY AFTER HERRNDORF'S _____!
- 22. SHOW ME WHERE YOU'RE AT AND I'LL COME WHERE YOU'RE _____!
- 26. DAL NEEDS A NEW _____ FOR CHRISTMAS.
- 27. A PERSON WHO DOES NOT BELIEVE IN BIRTH CONTROL IS CALLED A _____!
- 28. THROCKMORTON NURONIK LUSH'S "INITIALS."
- 29. TO SEDUCE A SHIRREFF HALL GIRL, ONE NEEDS A LOT OF ENEI _____!
- 33. _____ GEORGE! IT'S HERRNDORF!
- 35. BIG NEWS! FINALLY MRS. SANTA CLAUS IS _____!
- 34. HERRNDORF'S FAVOURITE DRINK! _____ AND TONIC!
- 37. MOST ARTSMEN SPEND THEIR AFTERNOONS IN _____!
- 36. 'T WAS THE NIGHT BEFORE CHRISTMAS AND SANTA WAS PLAGSTERED: "IT A CREATURE COULD MOVE THE _____!"
- 37. LOVE C _____ (NOT MARY JEAN HILCHIE)
- 40. SANTA, HERRNDORF AND ENGINEERS DRINK _____!
- 41. WHAT HERRNDORF'S DOG SAID TO SANTA ON CHRISTMAS EVE.

