

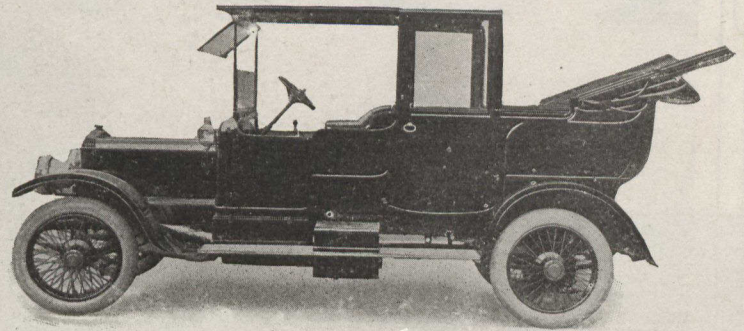
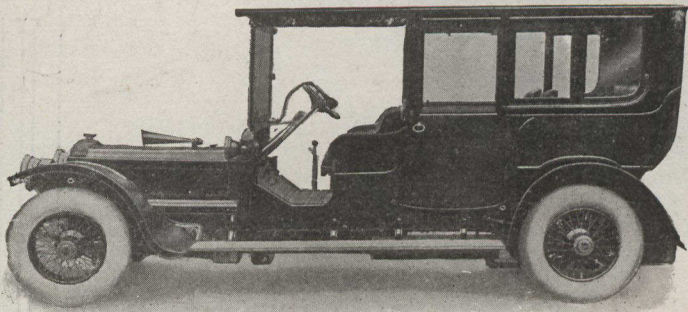
# "HOOPER" Motor Bodies

LONDON BUILT AND LIGHTEST

AS BUILT FOR

HIS MAJESTY THE KING  
H.M. QUEEN ALEXANDRA

HER MAJESTY THE QUEEN  
H.R.H. THE DUKE OF CONNAUGHT



Now Building For  
HIS MAJESTY THE KING

Built Specially For  
H.R.H. THE DUKE OF CONNAUGHT  
April, 1912

COMPLETE CARS FOR IMMEDIATE DELIVERY.

REPAIRS all kinds---body and CHASSIS.

EXPERIENCED ENGINEERS.

TYRES, PETROL, LUBRICANTS, ACCESSORIES.

PRICES (INCLUDING DELIVERY) UPON APPLICATION TO

**HOOPER & CO.,** St. James's Street,  
London, S.W.

## The Royal Line

To Europe

**Luxury with Economy**  
**3 Days on the Atlantic**  
THE ST. LAWRENCE ROUTE

No more magnificent river trip can be found anywhere else in the world. A two-day sail down the mighty, placid river on the splendid Royal Mail Steamships

**ROYAL EDWARD**  
**ROYAL GEORGE**

Two days of unequalled scenic and historic interest. Then a little more than **THREE DAYS ON THE ATLANTIC** to Bristol (Avonmouth). Special Express Trains whisk the traveler to London in two hours.

These steamers are in a class by themselves in Appointment, Seaworthiness and Beauty of Interior.

For all information apply to Steamship Agents, or the following General Agencies of the Company: Toronto, Ont., Canadian Northern Building; Montreal, Que., 226 St. James St.; Halifax, N.S., 123 Hollis St.; Winnipeg, Man., 272 Main St.

## CANADIAN PACIFIC

GREAT LAKES SERVICE---Five Sailings Weekly

From PORT McNICOLL to

S. STE. MARIE - PORT ARTHUR - FORT WILLIAM

Making close connections for all points west.

**STEAMBOAT EXPRESS**

Leaves Toronto 12.45 p.m. Mondays, Tuesdays, Wednesdays, Thursdays and Saturdays, making direct connection with steamers at Port McNicoll.

Full information from any C.P.R. agent, or write M. G. Murphy, Dist. Pass. Agent, Toronto.



## SPRING FISHING

"The Highlands of Ontario"  
Is the Fisherman's Paradise.

THE GRAND TRUNK RAILWAY SYSTEM  
THE DOUBLE TRACK ROUTE

Is the only line reaching all these resorts.

THE KIND YOU CATCH WHERE THEY ARE CAUGHT.

MUSKOKA LAKES—Black Bass, Pickerel, Salmon Trout.  
KAWARTHA LAKES—Speckled Trout, Black Bass and Maskinonge.  
LAKE OF BAYS—Speckled Trout, Salmon Trout, and Black Bass.  
ALGONQUIN PARK—Speckled Trout, Black Bass, and Salmon Trout.  
TEMAGAMI—Black Bass, Lake Trout, Speckled Trout, and Wall-eyed Trout.  
LAKE NIPISSING—Black Bass, Maskinonge, Pickerel, and Pike.  
GEORGIAN BAY—Black Bass, Salmon Trout, Lake Trout, Pickerel, and Trout.

OPEN SEASONS.

BLACK BASS—June 16th to April 14th following year.  
SPECKLED TROUT—May 1st to September 14th.  
SALMON TROUT AND LAKE TROUT—Dec. 1st to Oct. 31st following year.  
MASKINONGE—June 16th to April 14th following year.  
PICKEREL—May 16th to April 14th the following year.

Write to the following Agents for full particulars—how to get there, maps, rates, etc.: A. E. DUFF, Union Station, Toronto, Ontario; J. QUINLAN, Bonaventure Station, Montreal, Quebec; W. E. DAVIS, Passenger Traffic Manager, Montreal; G. T. BELL, Asst. Passenger Traffic Manager, Montreal; H. G. ELLIOTT, General Passenger Agent, Montreal.