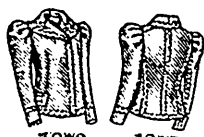


# PATTERN CHECK

Equivalent to TEN CENTS in money in purchasing each of the Patterns below:



1861 1861



1873 1873



1890 1890



1891 1891



This Check entitles the Bearer to an Allowance of TEN Cents on One of Each of the following Butterick Patterns: Nos. 1861, 1873, 1890 and 1891. Good at any Butterick Pattern Agency.

*The Delineator Publishing Co*  
OF TORONTO. (Limited.)

The ENTIRE Check must be presented when ordering.  
It is good for only ONE order.



## The Delineator

The Largest, Most Representative and Thoroughly Up to Date of all the Women's Magazines Published.

The many Colored Plates of Fashions and Millinery, with the other abundant Illustrations, are of immense value to all interested in Incoming and Prevailing Styles. Lovers of Fancy Work will find a larger variety of novel designs than in many periodicals devoted solely to that purpose. In general reading there is a wide range of topics touching on nearly everything of interest to women: Cookery, the Care of Children, Household Duties and Appointments, Beauty and Hygiene, Etiquette, Education, Employments and Professions, Handicrafts and Occupations, Entertainments, etc., etc., with a complete story each month by a distinguished novelist.

Price of Single Copies, 15 Cents each.  
Subscription Price, - \$1.00 a Year.

THE DELINEATOR, when sent on Subscription from the London Office, is postpaid to any Address. No charge for Postage is made to Subscribers and Parties ordering Single Copies, residing in the United States, Canada, Newfoundland or Mexico.

75 Cents for Extra Postage must be paid on every Subscription ordered for other Countries than those above mentioned.

The Delineator Publishing Company of Toronto (Limited), 33 Richmond Street, West, Toronto.

If you want to Subscribe to THE DELINEATOR for Yourself or a Friend, Please Send the Order on this Blank:

Enclosed find \$1.00 for a Subscription for One Year to  
**THE DELINEATOR.**

Name, \_\_\_\_\_

Post-Office, \_\_\_\_\_

County, \_\_\_\_\_

State, \_\_\_\_\_

Post-Office Box or  
Street Address . . . \_\_\_\_\_

Begin with the Magazine for the Month of \_\_\_\_\_ 189