

SHOPS YOU OUGHT TO KNOW

Designed to Place Before Our Readers the Merchandise, Craftsmanship and Service Offered by Shops and Specialty Stores.

BABY CLOTHING

BABY'S BEAUTIFUL LONG Clothes, daintily made of the finest materials, everything required; ten dollars complete. Send for catalogue. Mrs. Wolfson, 672 Yonge street, Toronto.

BARGAINS

CORSETS, ALL SIZES AND PRICES. D. & A. Corsets and Brassieres, at Wetmore's, Garden street.

CHIMNEY SWEEPING

WITH MECHANICAL APPARATUS we make and repair furnace and conductor pipe, kettles, boilers, also plastering and whitewashing. Repair Shop, corner Brunswick and Haymarket Square. Open evenings. Phone 3714.

DANCING

"WOODMERE" ONLY SCHOOL OF dancing in the province. Private appointment any hour. New classes opening regularly. Hall rented for private dances. Call 2012 for rates.

ENGRAVERS

F. C. WESLEY & CO. ARTISTS and Engravers, 59 Water street. Telephone M. 982.

HATS BLOCKED

HATS BLOCKED - LADIES' BEAVER, Velour and Felt Hats blocked over in latest styles. Mrs. T. R. James, 280 Main street, opposite Adelaide. If

HAIRDRESSING

MISS McGRATH, N. Y. PARLORS, Imperial Theatre Building. Special sale of hair goods in every design. All branches of work done. Gents' manicuring. Phone Main 2695-51. N. Y. graduate.

IRON FOUNDRIES

UNION FOUNDRY AND MACHINE Works, Limited, George H. Waring manager, West St. John, N. B. Engineers and Machinists, Iron and Brass Foundry.

LADIES' TAILORING

LADIES' COATS, \$35 to \$50. PARIS and New York styles; by expert tailor. A. Morin, 52 Germain street. 105097-11-27

MARRIAGE LICENSES

MARRIAGE LICENSES ISSUED AT any time. Wassons, Main street.

MEN'S CLOTHING

WE HAVE JUST RECEIVED SOME young men's suits and overcoats, ready to wear, made of good cloth and trimmings; splendidly tailored; fair and pleasing price. Custom and Ready-to-Wear Clothing, 182 Union street.

MONEY ORDERS

SEND A DOMINION EXPRESS Money Order. Five Dollars costs three cents.

MONEY TO LOAN

MONEY TO LOAN ON CITY REAL Estate by R. A. Davidson, Solicitor, 42 Princess street. 19808-11-28

PIANO MOVING

PIANO MOVING BY AUTO, FURNITURE moved to country, parties and picnics taken out, general cartage. Phone Arthur Stackhouse, Main 314-21.

PLUMBING

JORDON NOBLE PLUMBER, JOBBING given personal attention. 297 Brunswick street. Office M. 2973-32; residence M. 2219-31. 15498-12-30

PROFESSIONAL

TO LADIES-A SPECIAL TREATMENT for removal of hair, moles, wrinkles and muscular wasting, etc. R. Wilby Medical Electrical Specialty and Massage, 46 King Square, St. John.

REPAIRING

AUTO REPAIRS-ALL MAKES OF cars, Overlands a specialty. Cars called for and delivered. Phone 4078 M. Frank Cormier, 173 Marsh road. 19956-12-1

ROOFING

VAUGHAN & LEONARD, GRAVEL Roofing and Metal Work for buildings. Have your furnace and pipe repaired before cold weather. Shingles brought and sold. Work promptly attended to. Phone 2879-41.

SECOND-HAND GOODS

WANTED TO PURCHASE-GEN- tlemen's cast off clothing, boots, musical instruments, jewelry, bicycles, guns, revolvers, tools, etc. Highest cash prices paid. Call or write I. Williams, 16 Dock street, St. John, N. B. Telephone 1774-11.

WANTED TO PURCHASE-GEN- tlemen's cast off clothing, fur coats, jewelry, diamonds, old gold and silver, musical instruments, bicycles, guns, revolvers, tools, etc. Highest cash prices paid. Call or write H. Gilbert, 24 Mill Street. Phone 2892-11.

SEWING MACHINES

FOR SALE-TWO USED SEWING machines \$5 at Furnishers Limited, 169 Charlotte street. Phone 3662.

NEW WILLIAMS SEWING MA- chines. Sold direct from our store at lowest prices. Bell's Piano Store, 88 Germain street. 114758-12-15

SILVER-PLATERS

GOLD, SILVER, NICKEL, BRASS and Copper Plating, Automobile parts made as good as new, 24 Waterloo street, J. Groundlines.

SNAPSHOTS FINISHED

SEND ANY ROLL OF FILM AND 50c to Wassons, St. John, N. B., Box 1343, and have a set of very best pictures, glossy finish. Work returned postpaid.

STOVES

HEATING STOVES-WE HAVE A large variety of latest pattern hall and room stoves which we are selling at attractive prices. It will pay to get our prices. P. Campbell & Co., 73 Prince William street.

WATCH REPAIRERS

RINGS, WATCHES, CLOCKS FOR sale, watch repairing, seven years in Waltham factory. G. B. Huggard, 67 Peters street.

WATCH AND CLOCK REPAIRING a specialty. Watches, rings and chains for sale. G. D. Perkins, 48 Princess street.

W. BAILEY, THE ENGLISH, American and Swiss expert watch repairer, 188 Mill street (next Hygienic Bakery). For reliable and lasting repairs come to me with your watches and clocks. Prompt attention and reasonable charges. Watches demagnetized.

WELDING

ST. JOHN WELDING WORKS, NEL- son street, St. John, N. B. Our scientific welding experts can repair any broken auto parts or any machine parts in any metal.

REAL ESTATE

TO LET

Self-contained house with grounds, Lancaster Avenue, West St. John; also flats. Possession at once. City Real Estate Co., 60 Prince William Street. Phone M. 3074 and W. 324.

PROPERTY FOR SALE-THREE-

family new house, finished in 1918. Rental \$54 per month. Will sell at a bargain. Call Main 9797-21.

FOR SALE-ONE FREEHOLD (LIT-

tle) property, Prince street, West End. House remodelled on one acre lot. Apply Fenton Land & Building Co. Phone W. 87. 18002-12-1

FOR IMMEDIATE SALE-FARM OF

174 acres with small unfinished house on French Village road 9 miles from city. A grand chance for returned soldier. Half purchase price can remain on mortgage. Also 50 acres on Loch Lomond road 3 miles from city. Apply 143 Duke street. Geo. H. Waterbury. 15818-11-28

FARM-APPLY 42 MILLIDGE AVE.

14880-11-28

FOR SALE-TWO NEW SELF-CON-

tained houses on Douglas avenue, latest improvements for immediate occupation. Reasonable terms. Apply Garson, Water street. 14604-11-27

COMPLIMENTARY DESIGN

There is a distinct style in Eye- glasses suited to each individual. Our experience and good judgment will give you the best results always.

K. W. EPSTEIN & CO.

OPTOMETRISTS

193 Union Street

Open Evenings. Phone M. 3554.

WANTED

Experienced Chief Steward for local trip steamer. Must be a good caterer and not easily discouraged. Good wages, accommodation and steady position. Apply Shipping Master, Custom House, St. John.

FINANCIAL

NEW YORK STOCK MARKET.

(J. M. Robinson & Sons, Members Montreal Stock Exchange.)

New York, Nov. 25

Close. Open. Noon.

Am Sumatra . . . 90 90 1/2 91

Am Car and Fdry . . . 137 137 137 1/2

Am Locomotive . . . 96 96 96 1/2

Am Beet Sugar . . . 96 96 96 1/2

Am Can . . . 54 54 54 1/2

Am Int . . . 113 113 113 1/2

Am Smelters . . . 66 66 66 1/2

Am Tel & Tel . . . 100 100 100

Am Woolens . . . 127 127 127 1/2

Amacoada Min . . . 113 113 113 1/2

At. T. and S. Fe . . . 86 86 86 1/2

Brooklyn R. T. . . . 177 177 177 1/2

Balt. & Ohio . . . 38 38 38 1/2

Baldwin Loco . . . 112 112 112 1/2

Beth Steel B . . . 96 96 96 1/2

Chino Copper . . . 36 36 36 1/2

Ches and Ohio . . . 57 57 57 1/2

Col Fuel . . . 14 14 14 1/2

Can Pacific . . . 146 146 146 1/2

Cent Leather . . . 97 97 97 1/2

Crescent Steel . . . 217 217 217 1/2

Eric . . . 14 14 14 1/2

Gen Motors . . . 387 387 387 1/2

Imperial Ind . . . 54 54 54 1/2

Int'l Mar Com . . . 52 52 52 1/2

Int'l Mar Pfd . . . 105 105 105 1/2

Indust Alcohol . . . 105 105 105 1/2

Kennecott Copper . . . 29 29 29 1/2

Midvale Steel . . . 51 51 51 1/2

Maxwell Motors . . . 41 41 41 1/2

Mex Petroleum . . . 203 203 203 1/2

North Pacific . . . 84 84 84 1/2

N. Y. Central . . . 72 72 72 1/2

New Haven . . . 32 32 32 1/2

Pennsylvania . . . 48 48 48 1/2

Pierce Arrow . . . 79 79 79 1/2

Pan-Am Petrol . . . 108 108 108 1/2

Reading . . . 79 79 79 1/2

Republic I. S. . . . 107 107 107 1/2

St. Paul . . . 42 42 42 1/2

South Railway . . . 24 24 24 1/2

South Pacific . . . 98 98 98 1/2

Studebaker . . . 118 118 118 1/2

Union Pacific . . . 129 129 129 1/2

U. S. Steel . . . 105 105 105 1/2

U. S. Rubber . . . 123 123 123 1/2

Utah Copper . . . 75 75 75 1/2

Westing Electric . . . 54 54 54 1/2

Willis Overland . . . 81 81 81 1/2

MONTREAL TRANSACTIONS.

(J. M. Robinson & Sons, Members Montreal Stock Exchange.)

Montreal, Nov. 25

Sugar-110 at 72, 75 at 72 1/2, 10 at 72 1/2.

Brasil-10 at 52 1/2, 53 at 53, 130 at 53 1/2.

Bridge-50 at 107 1/2, 25 at 108.

Asbestos-25 at 89 1/2, 50 at 89 1/2, 25 at 89, 25 at 90.

Brompton-75 at 77.

McDonald-10 at 86.

Canada Car-10 at 90.

Cement-10 at 71.

Don Steel-115 at 72 1/2, 275 at 72 1/2.

Laurentide-5 at 234.

Power-1 at 89.

Abithi-150 at 180, 50 at 181, 10 at 181 1/2, 10 at 186, 10 at 190.

Rideron-20 at 140 1/2.

Power-1 at 89.

Ames-202 at 116.

Smelters-25 at 25 1/2.

Shawinigan-5 at 117 1/2, 2 at 117.

Spanish-25 at 67.

Steel Cast-45 at 75 1/2, 50 at 76.

Ships-50 at 171, 75 at 171 1/2.

Lyall-50 at 189, 10 at 189 1/2, 45 at 189, 125 at 187.

Cannex-25 at 88.

St. Law Flour-25 at 190, 5 at 119.

Wayagamack-5 at 80 1/2.

Spanish Pfd-155 at 94 1/2.

Asbestos Pfd-25 at 108, 25 at 101 1/2, 50 at 101.

Abithi Pfd-90 at 94 1/2.

Sugar Pfd-4 at 87 1/2, 5 at 122.

Ships Pfd-8 at 85 1/2.

Cement Pfd-5 at 97.

Textile Pfd-10 at 103.

War Loan, 1928-30 at 97 1/2.

War Loan, 1927-1900 at 99 1/2, 1000 at 99 1/2.

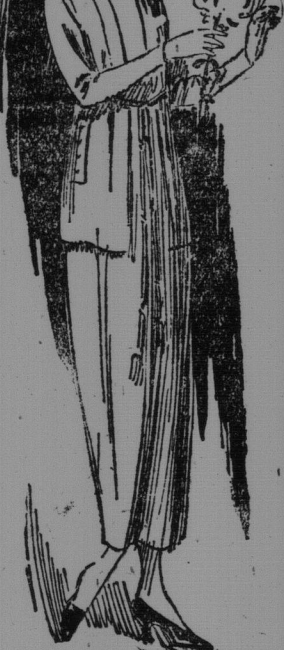
Victory Loan, 1923-1900.

Victory Loan, 1938-1900.

Last Call Wednesday

for LESSER'S GREAT REDUCTION SALE OF ONE PIECE DRESSES

33 1-3 to 50 Per Cent. Off All in Store



Never in the history of St. John has there been such an astounding low price sale, right in the Fall season, of such a superior line of Dresses at one-third off the regular price. Wednesday closes our sale. You will have no trouble finding the exact Dress to suit you here at a real saving.

Last Call Prices, Read Carefully Never Again!

SILK DRESSES

TWELVE SILK DRESSES in green, blue, grey and Burgundy. Regular price up to \$22.50. Last Call Price, \$12.98

TWENTY SILK DRESSES in all the leading shades, in plain, Russian back, beaded and other styles. Regular price up to \$32.50. Last Call Price, \$20.00

FORTY DRESSES in Crepe-de-Chene, Georgette Crepe, Silk, and in grey, taupe, blue, brown, Burgundy and black. Regularly priced up to \$35.00. Last Call Price, \$21.50

POPLIN DRESSES

TWELVE POPLIN DRESSES-Regular \$15.00. Last Call Price, \$7.98

FIFTEEN POPLIN DRESSES in green, blue, black, brown, Burgundy. Regular price up to \$25.00. Last Call Price, 1-3 Off Price Marked. There is One Here Waiting For You!

JERSEY DRESSES

TWENTY JERSEY DRESSES in blue, Hannah grey, taupe and fawn. Regular price, \$32.50. Last Call Price, \$20.00. If You Need One, Come Early. As They Will Go Very Quick at This Price!

SERGE DRESSES

TWENTY-ONE SERGE DRESSES in blue, green, brown, black and Burgundy. Regularly priced up to \$28.50. Last Call Price, \$18.75

FOURTEEN SERGE DRESSES in all shades. Regular price up to \$25.00. Last Call Price, \$15.75

FIFTY NEWEST STYLE CREATIONS of the season in all the leading shades, in braid, fringe, silk trimmed. Regular prices, \$35.00 to \$47.50. Last Call Prices, \$23.00 to \$31.50

ALEX. LESSER'S Cash and Credit Store

210 Union Street

Opp. Opera House

Phone M. 2909

Open Monday, Friday and Saturday Evenings

Good Looking Overcoats

Every Overcoat in this store will look good to somebody; and will look smart and becoming to somebody. We have overcoats here in suit every taste; smart, form-fitting models; Chesterfields; Ulsters; Slips, Waists-Seams.

It's something different about these double-breasted that makes them so popular this year; the high waist effect, pockets at a new angle, belt or waist-seams.

\$25 to \$65

A Fine Choice at \$40, \$45, \$50.

GILMOUR'S, 68 King St.

MUNITION PLANT WILL MANUFACTURE CANADIAN TRACTOR

Toronto Nov. 24.-Cliff Bros' munition plant on Atlantic Avenue is once more the scene of great industrial activity. This firm recently purchased outright the interests of the Chase Motor Truck Co., of Syracuse, N. Y., and moved the headquarters to Toronto with a view to supplying not only the domestic market, but the British Empire, the United States and other foreign countries with Made-in-Canada tractors. "While we are planning for a substantial production, we are not ambitious to produce the most tractors, and certainly not to produce cheap tractors," is the statement of Mr. F. R. Bartlett, General Manager of the Chase Tractors Corporation, Limited. "Cliff Bros. have in addition to their genius for factory organization, the old-fashioned ideas about quality which have typified all their manufacturing operations. As they see the tractor situation, after thorough investigation, there is need now for better tractors, rather than cheaper tractors. The farmers are demanding more reliable tractors, not only because they do better field work and are more useful in every way, but because they have found that there is no economy in a poor tractor, however cheap it may be. It is, therefore, our firm policy to make the Chase Tractor as it ought to be made. To construct it from good materials into a sturdy, durable machine. To use a motor with ample power. To make adjustments and inspections on each tractor that will insure the farmer against delays and loss of time once they put the Chase to work. Further, we are determined, once a farmer owns a Chase Tractor, that he will be able to command at all times proper and prompt service from Chase factory representatives. Cliff Bros' record of successful business is absolute assurance that we will carry out this policy. Remember their achievements in making munitions. Five million shells left their plant for France! The engineering staff and factory organization that carried out this difficult undertaking can repeat their success in the tractor business. They will produce the proper kind of tractor, and are adopting a production programme for 1920 that will give as low a cost as possible on such a high-grade machine."

THE PRINCE REMEMBERS

The warmth and wealth of our greeting to the Prince of Wales has not been forgotten by him. It was on the streets of our cities, between the rows of enthusiastic faces, that this young man learned about Canada. He knew that we saw past the fuss and pomp, that we loved him for his frank manhood, and he knew when he left that our hearts went with him. In England, today, a campaign is being carried on for the Middlesex Hospital. The Prince is pleading its cause, and it is his wish that the appeal for subscriptions be made in Canada as well as in the British Isles. The Middlesex Hospital was financially crippled by its enormous war-time activities. As well as carrying on ordinary civilian work, it treated more than 10,000 wounded soldiers. No expense was spared to relieve the sufferings of our boys and many of Canada's fighting men will remember ways of the kindness and comfort they received at the hands of its doctors and nurses. All cheques should be addressed to the Earl of Athlone, Chairman, Middlesex Hospital, London, Eng.

CANADIAN PACIFIC

Passenger Train Service From St. John. Effective Nov. 30, 1919.

Daily Except Sunday, Eastern Time.

Departures-6:40 a. m.-Local express for McAdam.

Connections Fredericton and Branches North and South McAdam.

8:20 a. m.-West St. John for St. Stephen.

8:20 p. m.-Montreal Express, connecting for Fredericton, Houlton, Woodstock, St. Stephen. At Montreal for Ottawa, Toronto, Chicago, etc., Winnipeg and West.

4:10 p. m.-Local express for Fredericton Junction.