

MATINEE EVERY DAY

CHILD'S TICKET 15c. ADULT'S TICKET 25c.

PRICES AT NIGHT

25°--35°--50°

# GRAND OPERA HOUSE

SUMMER SEASON

MATINEE EVERY DAY

CHILD'S TICKET 15c. ADULT'S TICKET 25c.

PRICES AT NIGHT

25°--35°--50°

## LYMAN H. HOWE'S



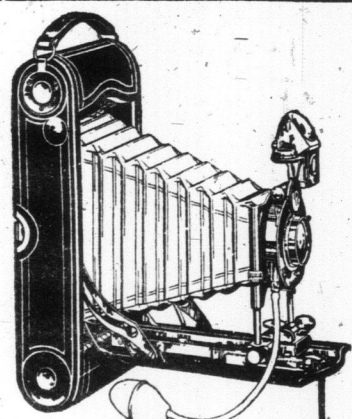
FIRST TIME IN CANADA OF  
THE WONDER FILM  
SUBJECT OF THE AGE



## THE PANAMA CANAL

THE GREATEST PRODUCER AND THE MOST PERFECT PHOTOGRAPHY BEFORE THE PUBLIC

MADE IN CANADA



Record the pleasures of to-day  
for the days to come with a

KODAK

Anyone can take pictures with  
a Kodak—and the rest is so very  
simple—all by daylight.

Kodaks, \$7.00 to \$85.00.

Catalogue of your dealer's,  
or write us.

CANADIAN KODAK CO., LTD.  
TORONTO, CAN.

J. G. STEWART, V.S.

Specialist on  
surgeryDisease of  
Horse and  
dog skillfully  
treated.

Office 156  
Simcoe St.  
PHONE  
Adelaide 850  
Residence  
286 North  
Lisgar Street  
PHONE  
Park. 1829

GRAY HAIR

Dr. Tremain's Nature Hair Restora-  
tive will positively restore gray hair  
to natural color and keep it so. IT IS  
NOT A DYE, and will not injure the  
scalp. Satisfaction guaranteed or  
money refunded. Price, one dollar.  
On sale at Bond's Bros. Drug Store,  
463 Yonge street, or corner Madison  
and Bpount street; also sent postpaid.  
Address Tremain Supply Co.,  
W. Toronto, Ont.



A scene on a big farm for homeless women. Berlin, Germany, has just dedicated a large and beautiful farm on the outskirts of the city, where the homeless and friendless women and children of the city are made at home. The latch string at the farm gate is not tied up with the many knots of red tape usually found at an institution of this kind. The photo shows some of the inmates loading the farm wagon with baled hay preparatory to sending it to market.

Rice's Indestructible Angle Steel Fence



CHEAPER THAN WOOD

T. G. RICE WIRE MANUFACTURING CO.

231 KING STREET EAST, TORONTO

CONSTRUCTION OF THE PANAMA CANAL.

To glean an idea of the great merit and importance—not to mention the immense cost—of securing the film reproduction, showing the construction of the Panama Canal, to be shown by Lyman H. Howe, at the Grand next week. It is necessary to say that it represents the work of the most expert photographers for a period of several years. Unquestionably this feature comes at a fitting moment—just as the gigantic undertaking is practically completed. It is remarkable in every sense, but especially so for its matchless photography. Two of the photographers contracted malaria while they were "on the job," and on stirring experiences when blasting operations had to be photographed from behind armored screens. The "stirring" came from flying boulders. Every branch of the work carried on among the wild wastes of Panama is vividly shown. Dredges, with huge iron hands plunging deep into the water, are shown emerging with five-ton fistfuls of rock. Cutting machines are seen piercing walls of solid rock as tho

they were of cheese. Everywhere tiny human forms are flitting to and fro among the clanging machinery that also seems almost human in its work. The machines move more like voracious, sentient monsters than contrivances of man. Indeed, they almost seem uncanny in the precision of their work. The fiery geysers of Yellowstone Park, which act as a "safety valve" for mother earth, also constitute a big feature of Howe's new program. At every turn water is seen boiling furiously either in vats carved by nature, or is being ejected to great heights by fierce explosions underneath. Masses of steam rush from openings in the ground. Terrible convulsions of nature ensue and monstrous cauldrons become more and more active until the whole ensemble become a veritable inferno. A visit to the Paris Zoo, where strange animals at close range, the wood-turning industry at Saint Claude, salmon fishing in British Columbia, tunny fishing near Palermo, Sicily, new "symphonies of the sea," and a ride on the Chicago, Milwaukee and St. Paul Railroad Company's train de luxe, "The Olympian," thru the Montane Canyon and over the Cascade Mountains in Oregon are a few of the many other features included in the program.

### Effective Decoration

The papers and fabrics we use for interior decoration are specially selected for their beautiful color harmonies and effective decorative qualities.

Let us prepare a scheme of decoration for you. Call at one of our studios and see some of our sketches and materials. Or we could send samples to your home, if more convenient.

The R. W. FLETCHER COMPANY, LIMITED

107 Roncesvalles Ave. P. 4327  
672 Yonge Street N. 7137

