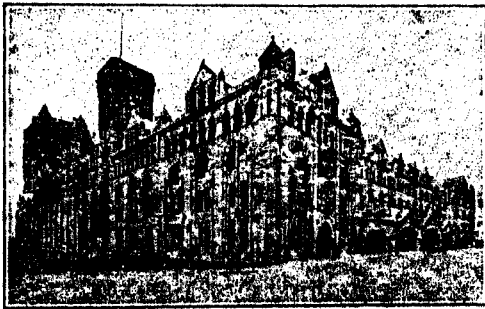


PEDLAR'S "PERFECT" PRODUCTS

MADE IN CANADA

The Recognized Fireproofing Necessities



New C.P.R. Windsor St. Station, Montreal.

The strongest proof of the superiority of Pedlar's "Perfect" Products is found in the fact that nearly all the large buildings erected within the past few years have been fire-proofed with them.

PEDLAR'S "PERFECT" METAL LATH

was used throughout in the construction of the new C. P. R. Windsor Street Station, Montreal—also Pedlar's "Universal" Corner Bead. Architects everywhere have come to realize the wisdom of specifying these materials because they are fire-proof, rust-proof, vermin-proof and ECONOMICAL.

Write Nearest Branch for Lath Booklet "C."

THE PEDLAR PEOPLE, Limited

(Established 1861)

Executive Office and Factories: OSHAWA, CANADA

Branches: Montreal, Ottawa, Toronto, London, Winnipeg.

24-R.

BUILDING SUPPLIES

FINE FACE BRICK. Dry Pressed and Plastic. All Colors and Sizes.

"TAPESTRY" BRICK. Red, Grey, and Golden.

ENAMELLED BRICK. Stanley Bros.' best English, also American in English and American sizes.

PORCELAIN FACED BRICK. Eggshell finish. White, Grey, Mottled and Variegated.

GLASS BRICK.

FLOOR QUARRIES.

ROOFING TILE.

SANDSTONES.

BEDFORD (INDIANA)

LIMESTONE.

"DARTNELL, LIMITED"

Established 1893.

MONTREAL

"GALVADUCT" and "LORICATED" CONDUITS are

(a) Regularly inspected and labeled under the supervision of Underwriters' Laboratories, (Inc.).

(2) Inspected by Underwriters' Laboratories (Inc.), under the direction of the National Board of Fire Underwriters.

(c) Included in the list of approved Electrical Fittings issued by the Underwriters' National Electric Association.

(d) Inspected and labeled under the direction of the Underwriters' Laboratories, (Inc.).

(e) Included in the list of conduits examined under the standard requirements of the National Board of Fire Underwriters' by the Underwriters' National Electric Association after exhaustive test by the Underwriters' Laboratories and approved for use.

CONDUITS COMPANY, LIMITED

TORONTO

MONTREAL