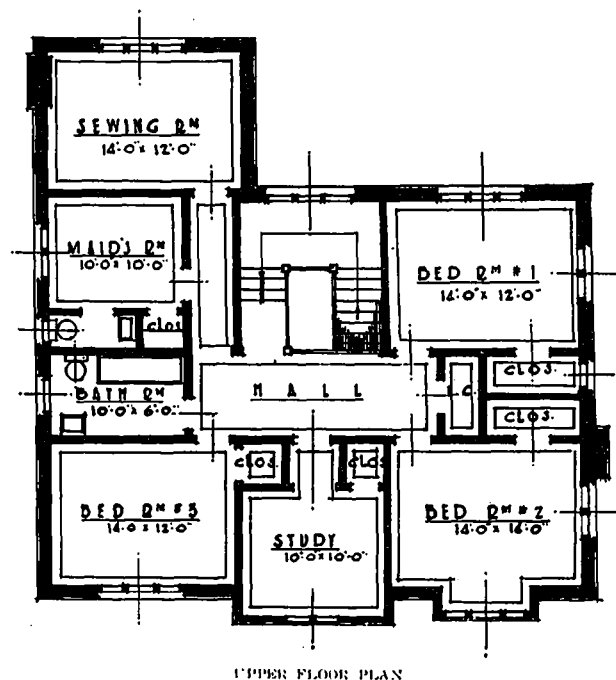
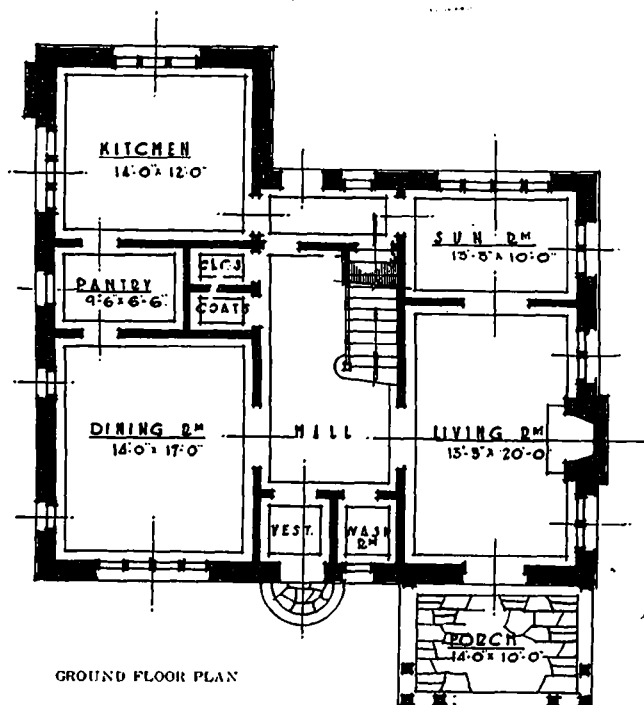


HOUSE OF A. E. BOOTH, ESQ., TORONTO.

HAROLD R. WATSON, ARCHITECT.



landscape grouping in connection with domestic architecture.

The houses are all constructed of Credit Valley limestone laid at random with half-timbered work and frames constructed of hand-adzed

pine, held together with oak dowels. The walks and drives are flagstone and form a happy contrast to the cold effect of concrete.

An interesting feature of the grouping is the fact that the north house in this development was so turned as to break away from the ex-