

**Guide-Advocate**

WATFORD, ONTARIO

Member of Canadian Weekly Newspapers Association.

W. C. Aylesworth, Publisher.

Average Circulation for year ending December 31, 1923.....1,565 (Covering East Lambton)

**ADVERTISING RATES**

Display ads, set, transient, 28c inch.  
 Display, yearly contract, set, 18c in.  
 Display Ads., all plate.....18c inch  
 Special Position...5c per inch extra.  
 Theatrical Adv'tg with reader or cut.....35c per inch  
 Business Locals, Front page 10c per line; inside pages 5c per line.  
 Classified Ads., One Cent per word each insertion. Minimum 25c.

FRIDAY, APRIL 11, 1924

**"Squibs by Dad"**

Mah jongg sets promise to rival firecrackers as a Chinese export.

As a jockey the Prince of Wales can say that he has made his mark.

Good night to fame. It is announced in Paris that Napoleon's nightshirt is to be sold at auction.

The Prince of Wales might add to his already enviable popularity by taking more interest in brides than brides.

A camera which can photograph by moonlight and starlight is reported to have been perfected by a California scientist. Many romantic scenes that have hitherto escaped the ubiquitous camera men may now add to the sentiment of nations.

The inventor of pink circus lemonade died the other day. He is credited with being the first to apply the well-known "acid test."

Idaho sheep sheeters are organizing for the spring clip. "Snip to the hide, let the wool fall where it may" is their motto.

Sudbury farmers complain that the sulphuric fumes from the nickel smelter damages their crops. Incidentally it kills the pests.

Owing to the recent death of the president, Honduras is reported to be without any government whatsoever. No government, no taxes, nothing. Happy Honduras!!

A trade school for training young men for the butcher business is proposed in Minneapolis. Weighing in thumbs with the order is one test of expertness.

Experts of a Colorado agricultural college plan enumerating and classifying garden pests. Many amateur gardeners are convinced that the neighbor's chickens are the most destructive.

A young couple who were injured in a motor accident in Muskogee were married in the ambulance as the bride was being removed from the hospital to her home. They expect to spend their honeymoon convalescing.

An analytical chemist says that a single teaspoonful of soil may contain, in living bacteria, more living inhabitants than reside in the whole of Canada. The amateur gardener little realizes that he is contending with a countless and invisible host.

By mistake a woman in Corning, N. Y. mixed plaster of paris in the batter used for making her husband's morning pancakes. After consuming four he was alarmed to notice that he was spitting whitewash.

According to a ruling of a Los Angeles court a bee charged with stinging is not liable unless the "stinger" can identify the stinger. All bees look alike to a victim who has been punctured by their little probe.

A London coroner warns fat men over fifty years of age against the danger of stooping to pick up something they have dropped. The strain on the bloodvessels makes the exercise dangerous. Many a thrifty fat man will continue to risk rupturing a blood vessel rather than lose a coin he may have dropped.

As the result of a "community spirit" campaign in an Illinois city the Ku Klux Klan basketball team played the Knights of Columbus team for the city championship, the game being played in the Afro-American gymnasium for the benefit of the Jewish Welfare League. This is believed to be a record for a "get together" movement.

**FARMERS CONFIDENT THROUGHOUT LAMBTON**

Live Stock in Good Shape—Brisk Demand for Labor Reported

Lambton County farmers are starting the spring season with confidence in their industry, says W. P. Macdonald. All live stock has come through the winter in excellent condition. There is a good demand for well-fed cattle to be finished on the grass. An average of 1,500 hogs per week has been marketed from the country all winter. Several carloads of horses have been sold, but in general horses at local sales sell very low. Dairy cows have been in good demand.

Fall wheat and clover have come through the winter in good condition. The average devoted to alfalfa and red clover is increasing each year.

**Brisk Demand for Labor.**

There is a fairly brisk demand for farm labor, partly experienced men at \$25 per month or \$300 per year. In many cases the wages offered are around \$225 per year for the reason that a great proportion of the men offering as experienced will only measure up to the requirements of a partly-experienced man.

From present indications it is safe to say that the general average percentage of permanent improvement will be carried on this season. On Lambton County Farms. Wire fencing, cedar posts and building materials are being purchased.

The farmers producing early cash crops are in a position to meet the demands made upon them. Whole milk in city trade, the apple or fruit crop, sugar beet growing and canning factory crops, such as peas and corn, are the principal cash crops of Lambton farmers.

**Farmers Marketing Lamb Crop—Beware**

(By County Agricultural Office).  
 Petrolia, April 5th.

Quality products again to the fore. Official notice has been received at the Agricultural Office from the Industrial and Development Council of the Canadian Meat Packers that, "Beginning on July 15th, 1924, a cut on all buck lambs of \$2.00 per hundred weight will be made effective. Last year's experience should prove that there will be no exception."

Buyers of lambs in Ontario last season made a cut in the price of buck lambs of \$1.50 per hundred-weight or an average of about \$1.35 per lamb. In other words, every lamb of good quality properly castrated and docked, sold for \$1.35 more than did the buck lambs.

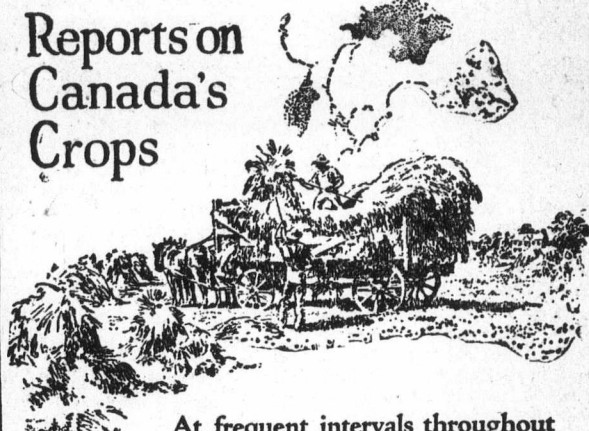
Many farmers were indifferent to all appeals to send to the market the kind of lambs that would suit the consumer and equally indifferent to the statement that the buyers would have to penalize the kind of lambs that the market did not want. In spite of this action the markets last fall were flooded with buck lambs. The effect of the cut in price on buck lambs was that the farmer producing the article that the market demanded got an enhanced price while the man who refused to do so suffered the consequences of his negligence.

The simple fact which makes this action necessary is that the consumers do not want to eat strong tasting lamb. If a housewife gets this kind, the whole family quits eating lamb. The result is a loss of trade to the buyer and a smaller market for the producer. What the market wants is nicely fleshed ewe and wether lambs finished at 80 or 85 pounds live weight.

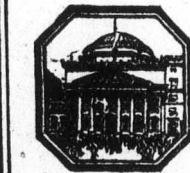
**Business is Better**

WE know that business is better and we view the future with quiet confidence because we have faith in Canada.

Therefore because of this, and because of the strong and stable position we enjoy today, due to a rigid policy of conservative management, we are prepared to extend generous support to concerns whose financial position and policies are sound.

**THE STERLING BANK OF CANADA****Reports on Canada's Crops**

At frequent intervals throughout the season the Bank of Montreal issues reports on the progress of the crops in Canada. These reports, telegraphed to headquarters from the Managers of the Bank's 550 Branches, cover every Province and form a reliable index of crop conditions.



The reports are furnished free. Upon request at any Branch of the Bank your name will be placed on our mailing list.

**BANK OF MONTREAL**

Total Assets in Excess of \$650,000,000.00

**Why Busy Women Want SMP Enameled WARE**

Busy women want SMP Enameled Ware because it will bring food to the boil almost twice as fast as all-metal utensils, and completes the cooking sooner. A woman can wash SMP Enameled Ware utensils faster than utensils that have to be scrubbed and scoured.

Three finishes: Pearl Ware, two coats of pearly-grey enamel inside and out. Diamond Ware, three coats, light blue and white outside, white lining. Crystal Ware, three coats, pure white inside and out, with Royal Blue edging.

THE SHEET METAL PRODUCTS CO. OF CANADA LIMITED  
 MONTREAL TORONTO EDMONTON VANCOUVER WINNIPEG CALGARY



THERE IS ONLY ONE PLACE IN WATFORD WHERE YOU CAN SECURE GENUINE "SMP" KITCHENWARE, AND THAT IS—

**McCormick & Paul**

"A Reliable Place to Buy Your Groceries and Hardware."

YOUR AD. HERE WOULD PAY!

**It pays to use MARTIN-SENOUR MARBLE-ITE FLOOR FINISH**

Nothing like it for Hardwood Floors  
 It wears like Iron

Write to Head Office, Montreal for Free Booklet  
 HOME PAINTING MADE EASY



SOLD BY  
**J. McKERCHER**  
 Watford

**CHEVROLET**

—an essential in business  
 —a necessity to most families

AMONG the greatest and most practical of man's inventions, one of the most vital instruments in modern business and one of the most useful and beneficial influences in family life is the modern automobile.

Dependable, Comfortable, speedy, unconfined in scope, unlimited in endurance and eminently practical in the economy of its operation, the automobile has contributed more to man's earning power and to his enjoyment and health than any other single factor.

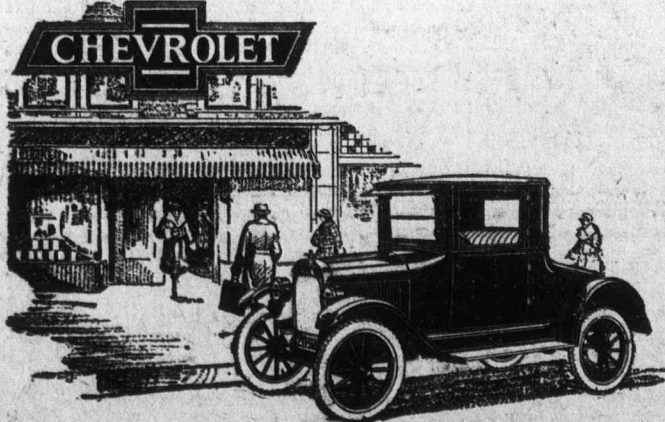
And unique among automobiles, Chevrolet provides everything any car can afford at a cost that is unapproached by another fully equipped quality car in the world. Chevrolet has the power to go any place and do anything that is possible for any other car, and at the same time it holds the world's record for low running cost and economy of upkeep.

Make a personal inspection of Chevrolet. Examine it thoroughly. Ask us for a demonstration.

C-216

Ask us about the G.M.A.C. Deferred Payment Plan

for Economical Transportation.



**J. H. HUMPHRIES, Sales & Service**

ONE BLOCK WEST OF WATFORD POST OFFICE